



BREAKFAST MENU

served daily 8am - 11am

ALL AMERICAN BREAKFAST ... \$11.75

2 eggs, choice of meat, home fries & toast
add 2 pancakes or 2 slices of French toast \$6

TRADITIONAL EGGS BENEDICT ... \$13

a classic English muffin Canadian bacon &
hollandaise with home fries

CLASSIC FRENCH TOAST ... \$11

served with choice of meat

ULTIMATE PANCAKE STACK

OR FRESH WAFFLE ... \$11

3 buttermilk pancakes or a belgian waffle with
choice of meat

BISCUITS & GRAVY ... \$9.75

twin biscuits smothered in sausage gravy

CREAMED CHIPPED BEEF ... \$9.75

2 slices of white toast covered in creamed
chipped beef

THE EXTRAS

not sold individually

Toast (white, wheat or rye) ... \$2.50

English Muffin ... \$2.75

Biscuit ... \$2.25

Bagel ... \$4.25

Pancakes ... \$5.50

French Toast ... \$5.50

Home Fries ... \$3.25

Oatmeal ... \$4.25

Grits ... \$3.25

3 slices of bacon ... \$3.75
(pork or turkey)

2 sausage patties or links ... \$3.75

2 slices of scrapple ... \$3.75

YOUR OMELET YOUR WAY \$11.75

cheese omelet with home fries or grits & choice
of meat & toast

add (75¢ each): spinach, onions, peppers, mushrooms,
tomato, jalapeños, extra cheese

BREAKFAST SANDWICH ... \$8.50

fried egg with choice of meat & cheese on your
choice of bread (white, rye or English muffin) &
grits or home fries

STEAK & EGGS ... \$18

6 oz. steak grilled & topped with caramelized
onions, 2 eggs & home fries or grits

BREAKFAST BURRITO ... \$10.75

grilled flour tortilla filled with scrambled eggs,
sausage & cheese topped with sour cream &
salsa with home fries

HOUSE-MADE PECAN

STICKY BUNS ... \$4

FOR THE KIDS

Silver Dollar Pancakes with Bacon ... \$4.50

Half Waffle with Bacon ... \$4.50

1 egg with bacon, toast & home fries ... \$4.50

DRINKS

Orange Juice ... \$3.75

Milk ... \$3.25

Coffee ... \$3.25

Tea ... \$3.25

Soda ... \$3.25

Mimosa ... \$7.50

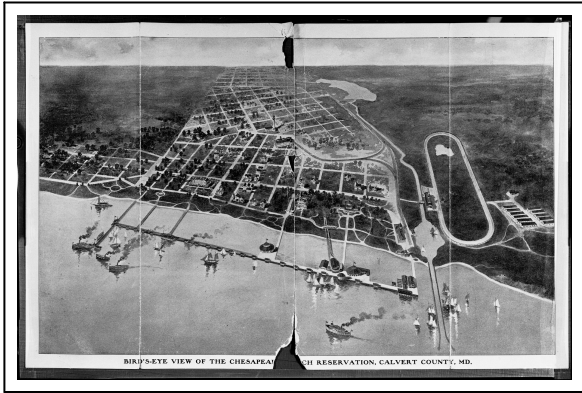
Bloody Mary ... \$7.50

The consuming of raw or undercooked meats, poultry, seafood, shellfish, or eggs may increase
the risk of foodborne illness, especially if the consumer has certain medical conditions.

rnrresortmd.com | 410.257.2735 | @rnrresortmd
4160 Mears Avenue Chesapeake Beach, MD 20732

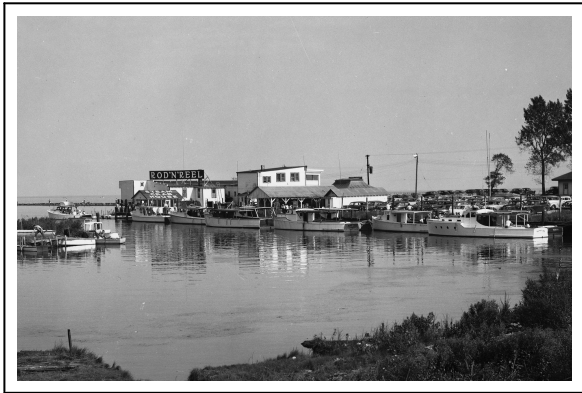


OUR HISTORY



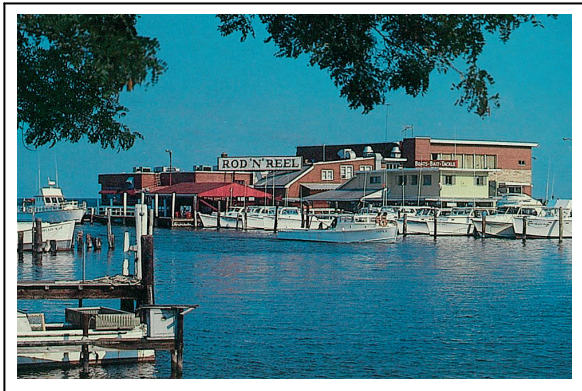
The Start of Chesapeake Beach

In 1898, Colorado railroad tycoons (led by Otto Mears) returned to the East to construct Washington's dream resort at Chesapeake Beach. The railroad began near the District line at Seat Pleasant and for years brought thousands here to Chesapeake Beach Park. Tourists also ventured from Baltimore on the Chesapeake by such steamboats as the "Dreamland" and the "J.S. Warden." Chesapeake Beach thrived until natural disasters and the economy struck the town. In 1930, the Park was moved from the boardwalk to land due to an ice storm. A hurricane damaged the boardwalks, steamboat pier, roller coaster, and pavilions in 1933. By 1935, autos evolved making the boats and train bringing tourists obsolete. Bankruptcy was inevitable.



The Tradition Begins

Stone jetties were constructed, channel dredged, and Charter Fishing gained popularity in 1940. In 1946, a new group of young, enterprising men acquired the Park and brought innovations that restored prosperity. They called it Chesapeake Beach Park. They were led by our Great Grandfather Wesley Stinnett. Slot machines were legalized in 1948 in Southern Maryland and business flourished. In 1965, the Restaurant business demanded more room and two floors were added: the main dining room (first floor) and Captain John Smith Room (banquet facilities, second floor). After a full career of providing family fun and entertainment, the amusement park was at the end of another cycle and had to close. The park property was then developed into Chesapeake Station.



What's Old is New Again

Rod 'N' Reel Restaurant and Tackle Shop changed ownership in 1978, but remained in the family of one of the previous owners from 1946. The goals of management today are the same as in 1946; to serve you a good meal with Southern Maryland hospitality at reasonable prices. Bingo started utilizing the Captain John Smith Room for daytime bingo in 1979. In 1981, "Welcome Summertime 1981" program was a huge success with the Grand Opening of the Boardwalk Cafe. Boardwalk Cafe was expanded and enclosed in 1982 for year-round enjoyment. 1983 brought the grand opening of the Crab Deck, serving steamed crabs and spiced shrimp - in an outdoor setting - above the Charter Boats. The Rod 'N' Reel Hotel opened in 2004. In 2010, the Bandshell was built using plans from the original 1900 Bandshell on the boardwalk.



The Tradition Continues

Additional improvements on the property began in 2019, starting with the 4-story parking garage. In 2020, 1936 Bar & Grill opened, paying tribute to the legacy of Wesley and Elizabeth Stinnett. It is located in the parking garage on the 2nd and 3rd floor. Today, as the Rod 'N' Reel Resort evolves, the tradition continues since 1946, to serve customers with warm Southern Maryland hospitality.