

Bluefin Bay Family of Resorts Wedding & Event Services

2024



 **Bluefin Bay** FAMILY OF RESORTS

BLUEFIN BAY • SURFSIDE • TEMPERANCE LANDING
On the shores of Lake Superior in Tofte, Minnesota 1-800-BLUEFIN



BLUEFIN BAY FAMILY OF RESORTS WEDDINGS

Weddings deserve a venue that's superior, spectacular and well worth the drive. When you host your wedding or special occasion at the Bluefin Bay Family of Resorts you have the combined facilities, amenities and accommodations of three stunning Lake Superior resorts from which to choose – Bluefin Bay, Surfside and Temperance Landing.

We believe that everything about your wedding day should make you feel beautiful, including the backdrop. Exchange vows in our cozy, private cove just a few feet from the shoreline of Lake Superior. Following the ceremony, host your reception in a private room at the Bluefin Grille or our larger ballroom at Surfside Resort. Our first-rate food and beverage services compliment our top-notch location.

At Bluefin Bay Family of Resorts, we host events with up to 80 people. All three of our Lake Superior Resorts offer upscale accommodations, breathtaking views, in-room amenities such as fireplaces and jetted whirlpool tubs, and our warm and friendly North Shore hospitality. Bluefin Bay has been frequently named Minnesota's Most Romantic Resort and MN Bride's Best Honeymoon Resort seven years in a row. Our resorts are also widely popular destinations for honeymoons, mini-moons and anniversaries!

The Bluefin Bay Family of Resorts offers three distinct lodging venues, ranging from the cozy and comfortable hotel suites, condos and townhomes of Bluefin Bay, to the total coastal luxury of our spacious townhomes at Surfside, to the distinctive log home luxury of Temperance Landing. Select from more than 20 different room styles and types to meet your group's unique needs.

All accommodations have spectacular Lake Superior views and most have in-room amenities such as fireplaces, whirlpool baths, and open spaces designed to let nature in.

More information can be found on all of our lodging options on our website, BluefinBay.com:



Bluefin Bay's cozy and comfortable townhomes are so close to the water you can practically touch it.



Surfside's more contemporary townhomes offer vast expanses of glass and amazing lake views.



Temperance Landing is perfect for larger groups, sleeping 6 to 8 comfortably, in distinctive log home luxury.

Superior Suite

- Two Bedrooms
- Lake Superior Views
- Whirlpool Tub
- Wood-Burning Fireplace



Grand Superior Master Suite

- Lake Superior Views
- King Bed
- Double Whirlpool Tub
- Wood-Burning Fireplace

Master Suite at Surfside

- King Bed
- Double Whirlpool Tub
- Gas Fireplace
- Patio overlooking Lake Superior



One Bedroom Condo

- Full Kitchen & Living Area
- Balcony overlooking Lake Superior
- Wood-Burning Fireplace



Bluefin Bay Family of Resorts is located within the most breathtaking natural environment in which to learn, relax and play. We offer the most robust complimentary activities program of any North Shore resort and many of the activities listed below are included in your stay.

Below is an overview of our recreational opportunities and activities by season.

SPRING, SUMMER & FALL

- Golfing: Superior National Golf Course
- Sea Kayaking
(Guided Tours)
- Biking: Mountains & Gitchi Gami Trail
(Guided tours)
- Hiking: Superior Hiking Trail
- Fishing: Charters Available on Lake Superior
- Mountain Tram at Lutsen Mountains
- Naturalist Programs
(Summer)
- Picnics – Group Catering Available
- Rock Picking Along the Shore
- Campfire and S'mores
- Fall Color Touring
- Birding/Wildlife Watching
- Tennis

WINTER

- Alpine Skiing & Snowboarding at Lutsen Mountains
- Cross Country Skiing
(Instruction included)
- Snowshoeing
(Guided tours available)
- Ice Skating
- Campfires
- Broomball

ONSITE AMENITIES

- Gift Shops
- Indoor Pools (2), Saunas (3), Indoor Hot Tubs (2), & Outdoor Heated Pool & Hot Tub Overlooking the Lake (Outdoor Pool & Hot Tub only available for guests staying at Bluefin Bay)
- Lakewalk
- Spa and Massage Services
- North Shore Fishing Museum
- Restaurants (3) – Bluefin Grille, Coho Cafe & Bakery & Waves of Superior Cafe
- Tennis Court
- Ice Skating Rink
- Fitness Centers
- Movie Rentals

NEARBY

- Lutsen Mountains Ski Resort (less than 10 min)
- North Shore Snowmobile Trail
- Superior National Golf Course (less than 10 min)
- Superior Hiking Trail
- Gitchi Gami Bike Trail
- Boundary Waters Canoe Area (BWCA)
Entry point 20 min away
- State Parks
 1. Temperance River State Park
 2. Cascade River State Park
 3. Tettegouche State Park
 4. Split Rock Lighthouse State Park
 5. Gooseberry Falls State Park
 6. George Crosby Manitou State Park
 7. Grand Portage State Park
 8. Judge C.R. Magney State Park
- Grand Marais Harbor & Fishing Village (art, museums, shops, dining – 25 min drive)

We can help arrange group tours and custom events for your group. Contact us at 218-663-6224 or ask your event coordinator for assistance.



CEREMONY SPACE PRICING



Ceremony Space	Capacity	Sunday-Thursday	Fridays & Saturdays
Tofte Cove	30	\$250	\$500
Beach Patio	80	\$250	\$500
Up to 80 White Chairs for Beach Ceremony		\$3 per chair	\$3 per chair
PA System Rental for Ceremony		\$50	\$50

Please contact our Event Coordinator, at 218-663-6224 for details.

RECEPTION SPACE PRICING



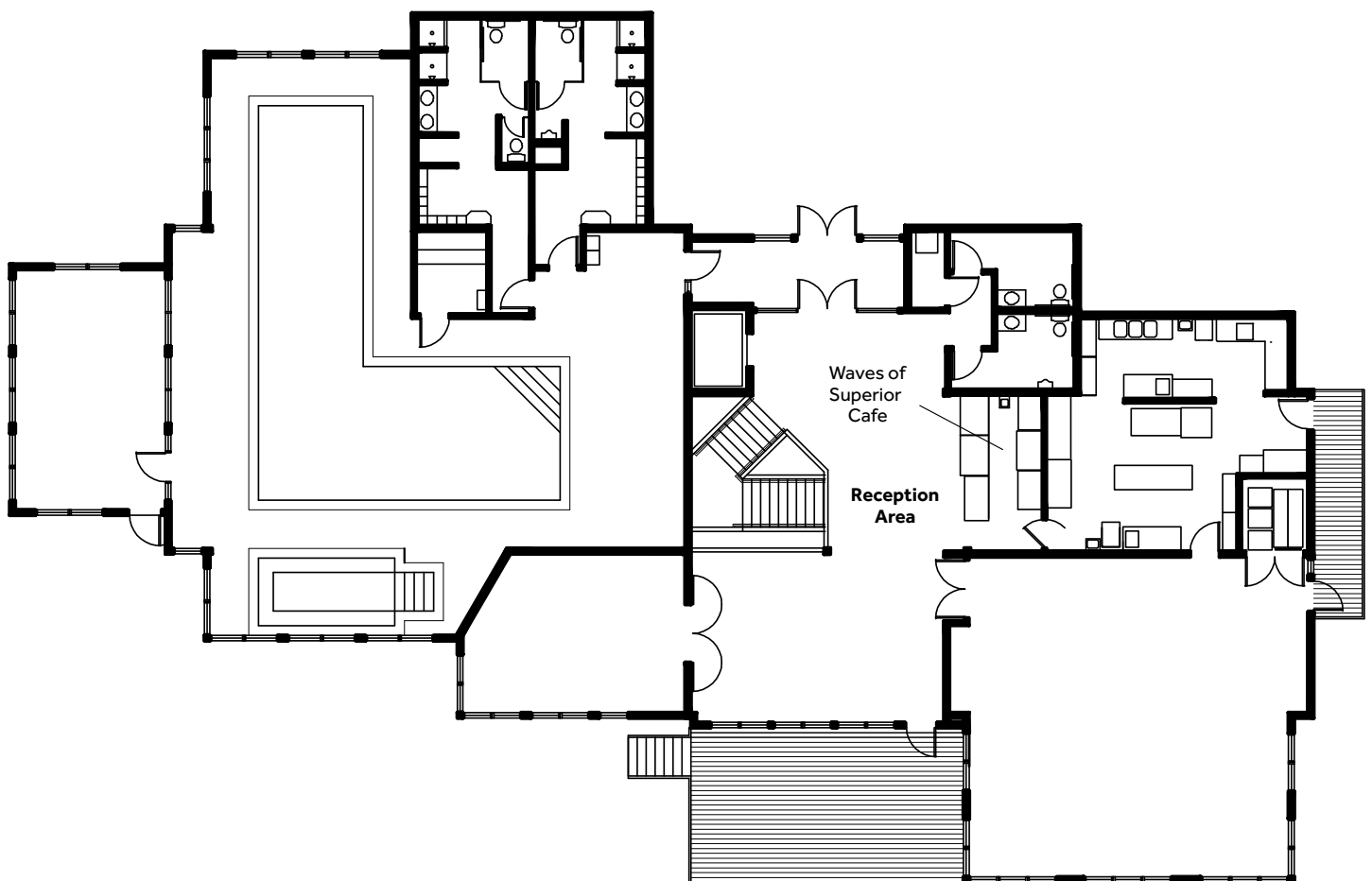
Reception Space Includes Tables, Chairs, & Dishware/Silverware	Capacity	Sunday-Thursday	Fridays & Saturdays
Bluefin Grille Shore Room	20	\$575	\$1,125
Bluefin Grille Superior Room	50	\$950	\$1,500
Tofte Room	36	\$300	\$300
Surfside Ballroom	80	\$3,500	\$3,500

Please contact our Event Coordinator, at 218-663-6224 for details.

EVENT & BANQUET FACILITIES

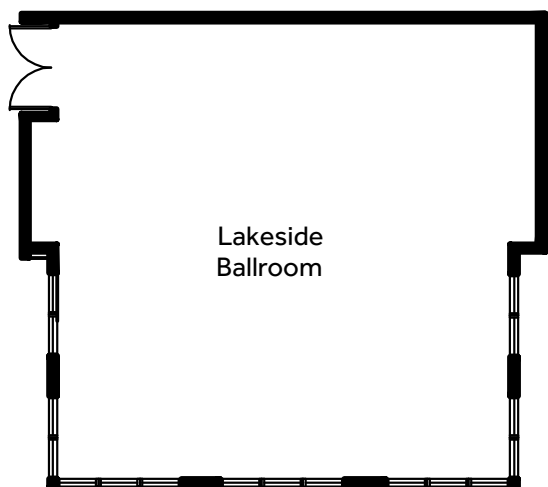
SURFSIDE FLOOR PLANS

Our state-of-the-art meeting and event facility at Surfside offers the ultimate in quality, flexibility, style and comfort. The grand lakeside ballroom has vaulted ceilings, wall-to-wall windows offering lake views, flexible table and seating arrangements, and a new banquet kitchen, making it perfect for weddings and banquets, yet flexible enough for board meetings, executive retreats or team trainings. The open foyer and cafe area with a lakeside deck is ideal for hosting a reception or cocktail hour. Indoor and outdoor seating can also be used for group breakout sessions. The Ledgerrock room with its comfortable executive chairs is ideal for breakout sessions, board meetings or smaller groups.



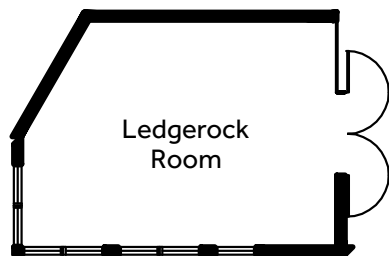
EVENT & BANQUET FACILITIES

SURFSIDE FLOOR PLANS



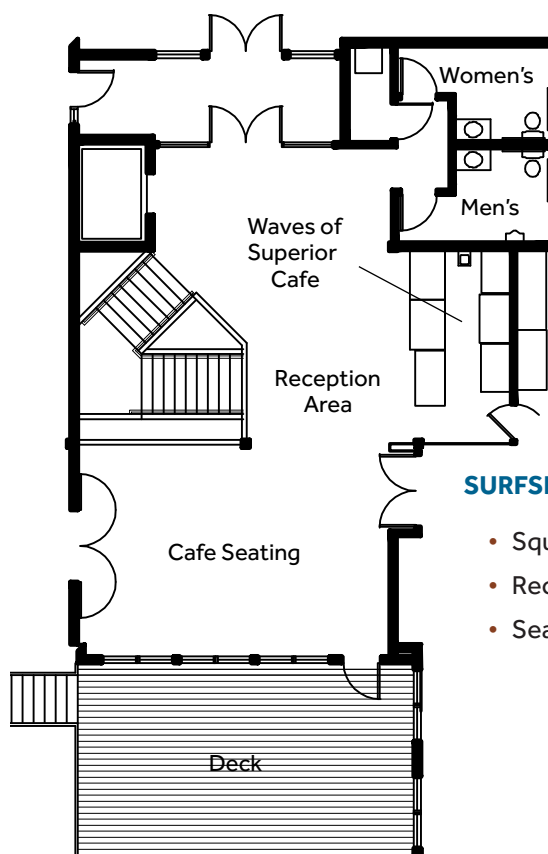
LAKESIDE BALLROOM

- Square Feet 1089
- Dimensions 33' x 33'
- Banquet90
- Theater80
- Classroom48
- Rectangle.....36
- U Shape.....33



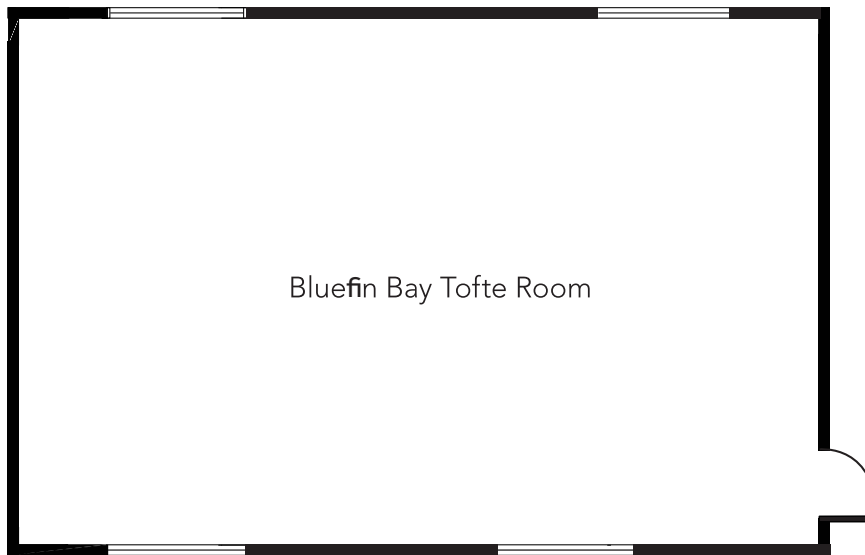
LEDGEROCK ROOM

- Square Feet 350
- Dimensions 23' x 16'
- Banquet36
- Theater36
- Classroom18
- Rectangle.....16
- U-Shape.....16



SURFSIDE FOYER/CAFE:

- Square Feet 756
- Reception/Cocktail.....30
- Seated Cafe Area24

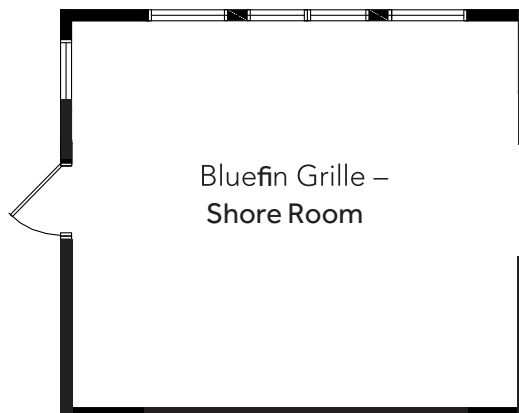


BLUEFIN BAY TOFTE ROOM

- Square Feet 600
- Dimensions 20' x 30'
- Theater6
- Classroom30
- Rectangle.....24
- U-Shape.....20

BLUEFIN GRILLE – MAIN LEVEL (BACK)

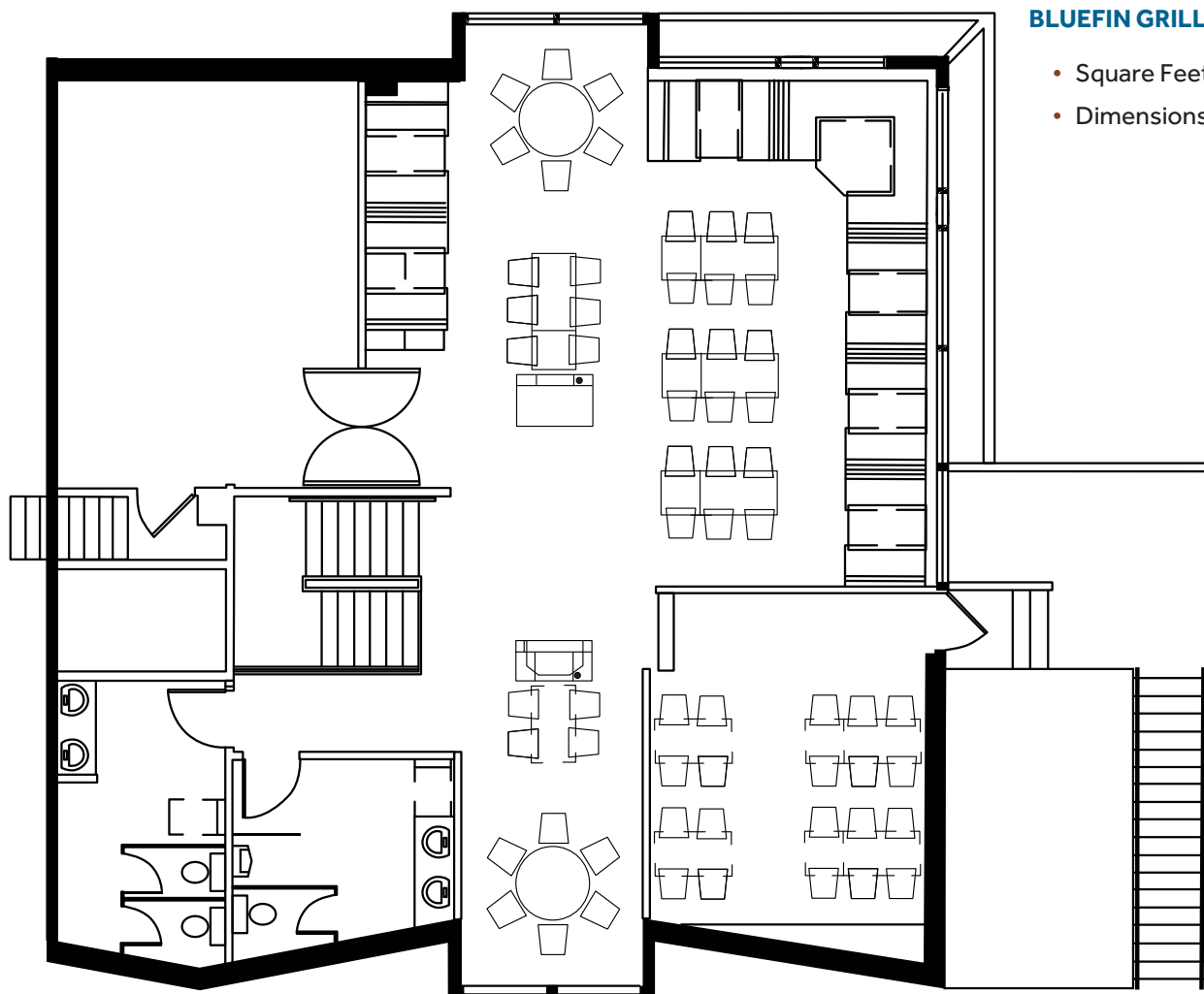
- Square Feet 252
- Dimensions 18' x 14'



EVENT & BANQUET FACILITIES

BLUEFIN BAY FLOOR PLANS

Bluefin Bay has been a premier wedding and event destination for more than 30 years, hosting wedding rehearsal dinners, wedding ceremonies, receptions, dances, anniversary parties, family reunions, and more. Our ever popular Bluefin Grille Superior Room accommodates groups up to 50 and offers an open space all on one level with vast lake views. The Shore Room at the Bluefin Grille, also with lake views, can be sectioned off into a private dining or meeting area in the back. The Tofte Room, our main conference room at Bluefin Bay, accommodates 20-36 for a banquet or meeting, and up to 40 for a reception. Guests choosing to host their event at Bluefin Bay enjoy the proximity to Bluefin lodging and outdoor amenities, as well as the flavorful and imaginative cuisine of our award-winning restaurants.



BLUEFIN GRILLE – UPPER

- Square Feet 1040
- Dimensions 40' x 26'

WEDDINGS & EVENT SERVICES

(UPDATED DECEMBER 2023)

CEREMONY LOCATION

Tofte Cove
Beach Patio

CAPACITY

30
80

SPACE RENTAL

Sun-Thurs \$250, Fri-Sat \$500
Sun-Thurs \$250, Fri-Sat \$500

Space can be reserved from 12:00pm day of until 7:00pm.

Rental Fees pay for the set-up, tear-down of the space as well as reserved signs at entrances.

Please note that Tofte Cove is a natural Lake Superior beach and therefore subject to change based on conditions of the lakeshore.

Indoor Space available at no cost if rain, subject to availability.

AMENITIES

Ceremony Chairs	\$3 each
Outdoor Table with Linen (18"x72" or 32"x72")	\$30 each
PA System at Ceremony	\$50 per use
Dance Floor (Surfside Ballroom only)	\$300
Reception Linens	\$300

Linen color options: black, white, or ivory

Linens are included with rental of Surfside Ballroom

DINING ROOM

Bluefin Grille Shore Room
Bluefin Grille Superior Room
Surfside Ballroom

CAPACITY

20
50
80

AVAILABLE TIMES

4:00-6:30
3:00-6:30
3:00-11:00

ROOM RENTAL

Sun-Thurs \$575, Fri-Sat \$1125
Sun-Thurs \$950, Fri-Sat \$1500
Friday-Sunday Only: \$3500
plus \$3500 F&B minimum

Deposit for dining space is 50% of room rental fee.

Due to dining limitations, dining time over contracted agreement will be charged \$150 per 15 minutes over.

BLUEFIN GRILLE MENU

Menu selections will be composed into a custom menu for your group

APPETIZERS

Platters : Small (serves approx. 25 guests)
Large (serves approx. 50 guests)

Artisan Cheese Display \$140 Small \$275 Large

Specialty & local cheese with assorted flatbreads & crackers

Fresh Fruit Tray \$125 Small \$246 Large

An arrangement of melons and berries served with a yogurt dip

Antipasto Display \$150 Small \$295 Large

Assorted cured meats & cheeses served with olives, hummus, peppers & crostini

Artichoke Dip \$140 Small \$275 Large

Artichoke hearts, garlic, cream cheese, sour cream, parmesan, and fresh dill. Served with pita chips

Shrimp Display \$190 Small \$375 Large

Shrimp served with a house-made cocktail sauce and lemon wedges

Warm Appetizers: Per Dozen

Boneless Chicken Wings \$21

Choice of sauce: BBQ or Buffalo
Ranch and Bleu Cheese

Beef Brochette \$80

Tenderloin, vegetables, pineapple, tamari soy glaze

Duck & Bacon Wontons \$40

Served with sweet chili sauce

Coconut Shrimp with Hoisin Sauce \$29

Served with garlic basil aioli

Mini Salmon Cakes \$50

Served with lemon dill aioli

Menus are subject to change; 20% gratuity will be added

BLUEFIN GRILLE MENU

Menu selections will be composed into a custom menu for your group

SALADS

House Salad \$6

Artisan lettuce, fresh seasonal vegetables, onions, croutons
Choose one dressing per group: Buttermilk Dill Ranch, Bleu Cheese, Lingonberry Vinaigrette

Caesar Salad \$6

Romaine lettuce, parmesan cheeses, croutons, caesar dressing

MEAL OPTIONS

Choose up to three per group

Plated meals will include bread service

Pan Fried Walleye (GF) \$34

Chickpea breading, lemon caper butter sauce, seasonal vegetables

Lingonberry Salmon \$38

Seasonal vegetables

Filet Mignon (GF) \$40

Red wine mushroom reduction, seasonal vegetables

Spaghetti Squash Primavera* (GF/VEG/SPICY) \$24

Bell peppers, onions, mushrooms, roasted cauliflower, broccoli, arrabiata sauce

Surf n' Turf \$52

Filet mignon with bearnaise, shrimp

Seared Duck Breast \$34

Orange pecan glaze, seasonal vegetables

Beef Short Rib \$29

Sesame ginger braised, seasonal vegetables

Pan Fried Chicken Breast \$27

Herb marinated, lightly dusted in seasoned flour, champagne tarragon sauce, seasonal vegetables

Starch options (choose one): Roasted Red Potato, Mashed Potato, Wild Rice Pilaf

**Starch does not apply to Spaghetti Squash Primavera*

Menus are subject to change; 20% gratuity will be added

Surfside Ballroom Bar Pricing

Below bar options are for the Surfside Ballroom. Weddings hosted within the Bluefin Grille are serviced from the full bar there.

HOUSE BRAND PRICING \$7

PREMIUM BRAND PRICING \$9

House Brands:

New Amsterdam Vodka
New Amsterdam Gin
Phillip's Rum
E&J Brandy
Windsor Whiskey
Durango Tequila
Jim Beam Bourbon

Premium Brands:

Tito's Vodka
Tanqueray Gin
Bacardi Rum
Crown Royal Whiskey
Jameson Irish Whiskey
Jack Daniel's Whiskey
Maker's Mark Bourbon
Patron Tequila

Wines - Oxford Landing \$8/glass (\$30/bottle if hosted bar)

Pinot Noir
Cabernet Sauvignon
Chardonnay
Pinot Grigio
Merlot

Beer - \$6/bottle

Coors Light
Michelob Golden Light
Bent Paddle Hop
Castle Danger Cream Ale
Duluth Cider Gitch
White Claw Vodka Soda - Assorted Flavors

Menus are subject to change; 20% gratuity will be added