

---

THE ULTIMATE HOMESTAY EXPERIENCE AT  
**PARKLANE SUITES**  
GOODWOOD PARK HOTEL

---







# PARKLANE SUITES

Goodwood Park Hotel is a celebrated institution in hospitality circles, truly one of the most endearing pioneers of the tourism industry.

Home to an array of deluxe accommodations, including its elegantly appointed Parklane Suites, these refurbished suites are specially designed for long stays. The split-level apartment-style offers guests a more enjoyable 'home away from home' stay experience, complete with thoughtful services and contemporary amenities. Adopting natural wood finishes and neutral shades further enhance the warm and welcoming atmosphere. Housed in a separate building next to the hotel and within minutes to its enviable facilities, each unit comprises a separate bedroom, spacious living-cum-dining room, a bathroom, a kitchenette and a huge balcony.

Situated at the top of a small hill, surrounded by lush landscaped gardens, Parklane Suites provide a quiet retreat for its discerning guests even with the hustle and bustle of the city at its doorstep. Conveniently located within Singapore's famed shopping belt in Orchard Road, it is also a 10-minute drive to the Central Business District.







#### Amenities include:

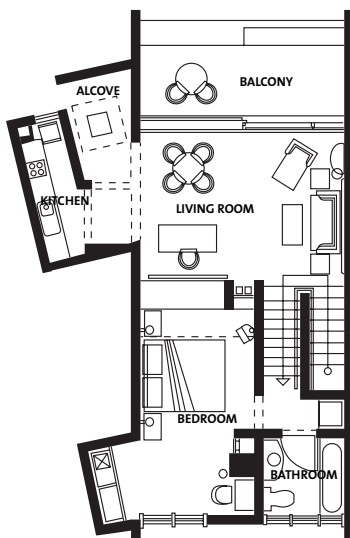
- Queen-size bed
- Sofa bed
- Dining and working table
- Fully-equipped kitchenette with cooking/dining utensils
- Induction cooking hob and hood
- Oven and microwave oven
- Full-size fridge
- In-room wired/wireless internet access
- Coffee and tea making facilities
- Rain shower
- Washing machine-cum-dryer
- LCD TV with multi-channel cable
- In-room safe
- Bathroom toiletries
- Bathrobe and hairdryer
- Iron with ironing board



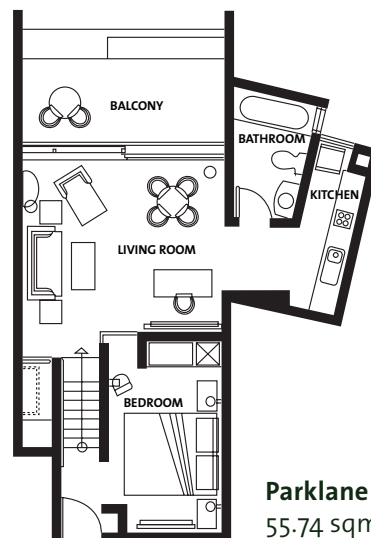
#### Guest Services:

- Airport transfers
- Daily breakfast
- In-room dining
- Concierge
- Daily housekeeping
- Laundry, dry cleaning and pressing services
- Business centre
- Foreign exchange
- Limousine services
- Valet parking
- 24-hour security
- Travel and tour assistance
- Complimentary access to Goodwood Park Hotel's outdoor swimming pools and gym
- Complimentary Wi-Fi

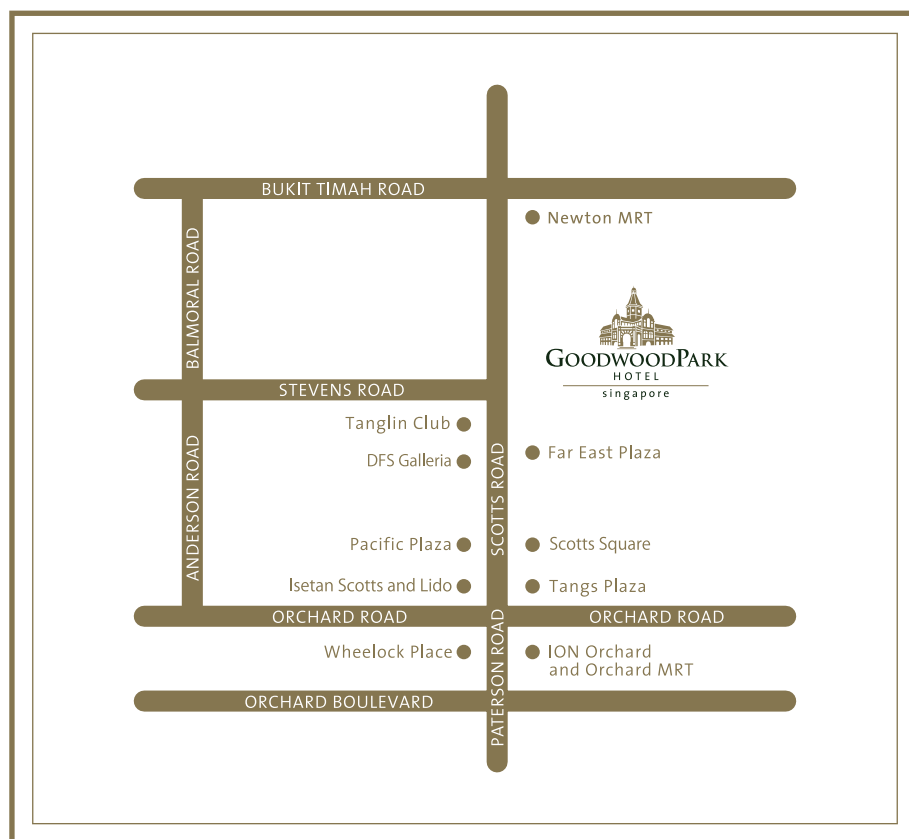
#### Room Specifications



**Parklane Split Level Suite**  
74.32 sqm / 800 sq ft



**Parklane Split Level Studio Suite**  
55.74 sqm / 600 sq ft



**GOODWOOD PARK HOTEL**  
22 Scotts Road Singapore 228221

TELEPHONE +65 6737 7411  
FACSIMILE +65 6732 8558  
[enquiries@goodwoodparkhotel.com](mailto:enquiries@goodwoodparkhotel.com)  
[www.goodwoodparkhotel.com](http://www.goodwoodparkhotel.com)

MEMBER OF THE GOODWOOD GROUP OF HOTELS

