



Pre-Function



Winter Garden



Roof Terrace

With a seamless integration into the university experience, guests of The Study at University of Chicago will step onto campus the moment they exit the hotel.

Offering approximately 4,700 ft<sup>2</sup> of conference space, with a multitude of flexible event spaces, ideal for spirited talks, strategic planning sessions, recruiting, business meetings.

A light-filled Winter Garden is ideal for social occasions and celebrations. A 2,200 sq ft indoor/outdoor entertainment and event space featuring an arboretum-inspired mural by Dean Barger and elaborate light fixture by John Pomp Studios. An outdoor terrace with high grey brick walls and surrounding greenery provide privacy from the street.

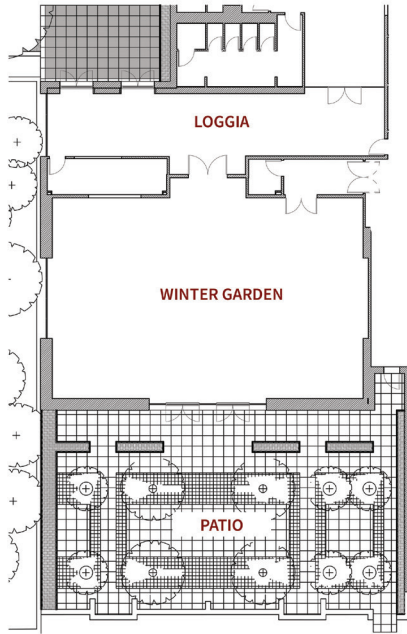
All spaces are fully equipped with the latest in a/v technology and complimentary wi-fi.

**For more information, contact:**

Sabrina Lockett | Catering Sales Manager | [slockett@studyhotels.com](mailto:slockett@studyhotels.com) | 872.315.1316

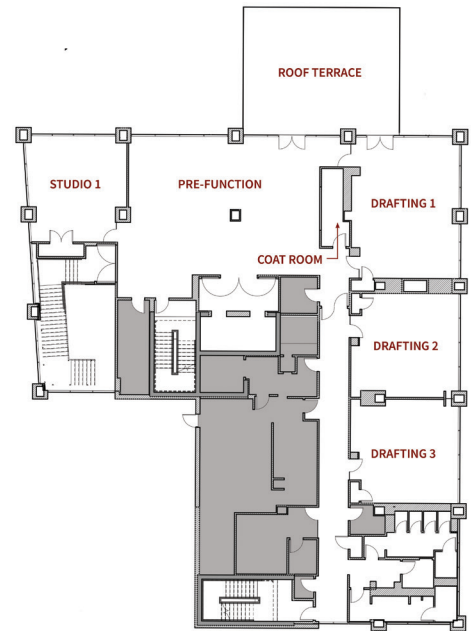
**SEATING CAPACITY**

Space	Theater	Classroom	Banquet	Conference	U-Shape	Hallow Square	Reception
Winter Garden	200	150	158	55	40	45	225
Studio 1	40	30	37	20	15	20	40
Pre-Function	n/a	n/a	60	n/a	n/a	n/a	70
Drafting 1	50	38	45	30	22	n/a	55
Drafting 2	40	30	36	20	15	20	40
Drafting 3	40	30	38	20	15	20	40
Roof Terrace	n/a	n/a	30	n/a	n/a	n/a	45



← **FIRST FLOOR**  
Winter Garden and Loggia based on per person minimum

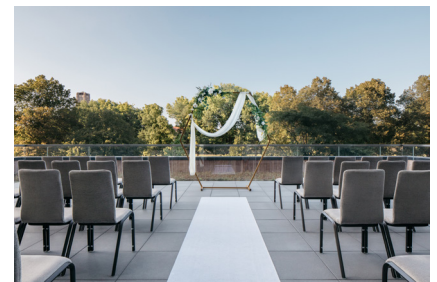
**SECOND FLOOR** →  
Drafting Rooms and Studio 1 available for full and half day rentals  
Roof Terrace based on per person minimum



Winter Garden



Studio 1



Roof Terrace



Loggia



Drafting 1



Drafting 2 / Drafting 3