



NITA LAKE LODGE
RESORT & SPA

NITA SEASON PASS PACKAGE
2024/25

SEASON PASS PACKAGE 2024/25

The Nita Season Pass is a multi-night package, pre-paid at the beginning of the season. It gives you unbeatable savings on your room rate for multiple stays throughout winter.

The Season Pass is available in **10**, **20** or even **30**-night packs. In addition, it provides exclusive perks and benefits for pass holders leaving you more time to plan your Whistler adventure!

SEASON PASS HOLDER PERKS

- Receive support from your personal, on-site contact at the Lodge for all inquiries, reservations, changes and more.
- VIP Gold discount card to use at the Lodge; get 20% off food at The Den, Cure Lounge & Patio, Fix Cafe, and discounts at The Spa at Nita Lake Lodge.
- Complimentary mountain-side ski storage in Creekside throughout the season.
- Complimentary self-parking for one vehicle per stay.



SEASON PASS PRICING
2024/25

Nita Winter Pass 2025 (Pre-tax)	10 nights		20 nights		30 nights	
	Midweek	Unlimited	Midweek	Unlimited	Midweek	Unlimited
Studio Non-Lakeview	\$2,843	\$4,792	\$5,306	\$8,985	\$7,391	\$12,579
Studio Lakeview	\$3,218	\$5,192	\$6,006	\$9,735	\$8,366	\$13,629
One Bedroom Non-Lakeview	\$3,593	\$6,392	\$6,706	\$11,985	\$9,341	\$16,779
One Bedroom Lakeview	\$3,968	\$6,792	\$7,406	\$12,735	\$10,316	\$17,829
Two bedroom Non-Lakeview	\$5,243	\$8,952	\$9,786	\$16,785	\$13,631	\$23,499
Two Bedroom Lakeview	\$5,618	\$9,352	\$10,486	\$17,535	\$14,606	\$24,549

Prices in CAD and do not include applicable taxes. Midweek Pass is bookable Sunday - Thursday only, Unlimited Pass is bookable any day of the week. Optional breakfast addon for an additional price (\$30 per adult per night). **Blackout dates January 17-19, 2025, February 14-22, 2025.**

NATURALLY CAPTIVATING

Embark on an adventure into unrivaled mountain comfort.

Each of our 77 spacious suites are beautifully appointed and feature king-sized beds, a double-soaker tub, glass-enclosed rain shower and a comfortable seating area with a basalt gas fireplace.

With stunning lake or valley views, these luxury suites offer the perfect escape after your day of Whistler adventures.



FEATURED AS STANDARD

- King-sized bed
- Basalt gas fireplace
- SMART TV
- CubieBlue® docking station
- Free, unlimited Wi-Fi and hardwired internet
- Double-soaker bath tub and separate rain shower
- Luxurious heated slate tile flooring in the bathroom
- Private, in-room safe
- Complete with fridge, sink & Nespresso coffee machine



STUDIO SUITES

Offering a contemporary twist on iconic mountain comfort, our Studio Suites are not your average hotel rooms.

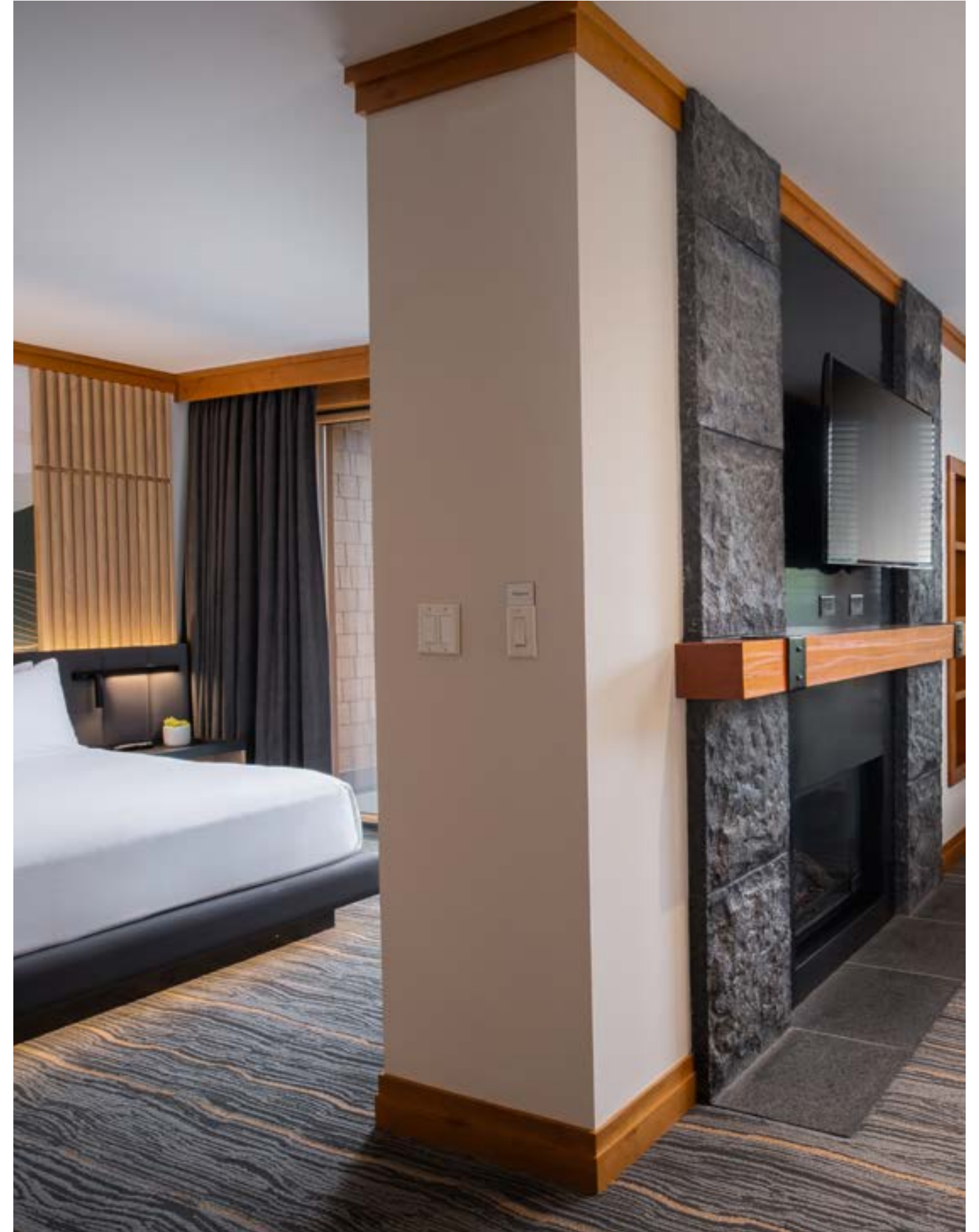
These spacious 500 square-foot studios boast lounge areas with a basalt gas fireplace, fabulous bathrooms and luxurious king-sized beds. Enjoy views of the Creekside valley, or upgrade to our Studio Lake View Suite.

ONE BEDROOM SUITES

Our most popular suite will tempt even the most ambitious adventurer to relax.

Separated by a $\frac{3}{4}$ length wall, the bedroom and living areas both feature unique design elements and allow light to flow seamlessly through the 640 square-foot space. If you have to share; a queen sized pullout couch provides extra sleep space.

To really up the "wow" factor, upgrade to a One Bedroom Lake View Suite.





TWO BEDROOM SUITES

With two levels and show-stopping views, our two bedroom suites are sure to impress.

These 1,060 square foot suites feature the same open concept layout as our One Bedroom Suite, plus a second lofted master bedroom and bathroom upstairs.

Ideal for sharing with friends or family, the couch in the living area easily transforms into a queen-sized bed. Lavish floor-to-ceiling windows showcase the surrounding Creekside valley views and let the light.

Looking for the best views in the house? Upgrade to a Two Bedroom Lake View Suite.

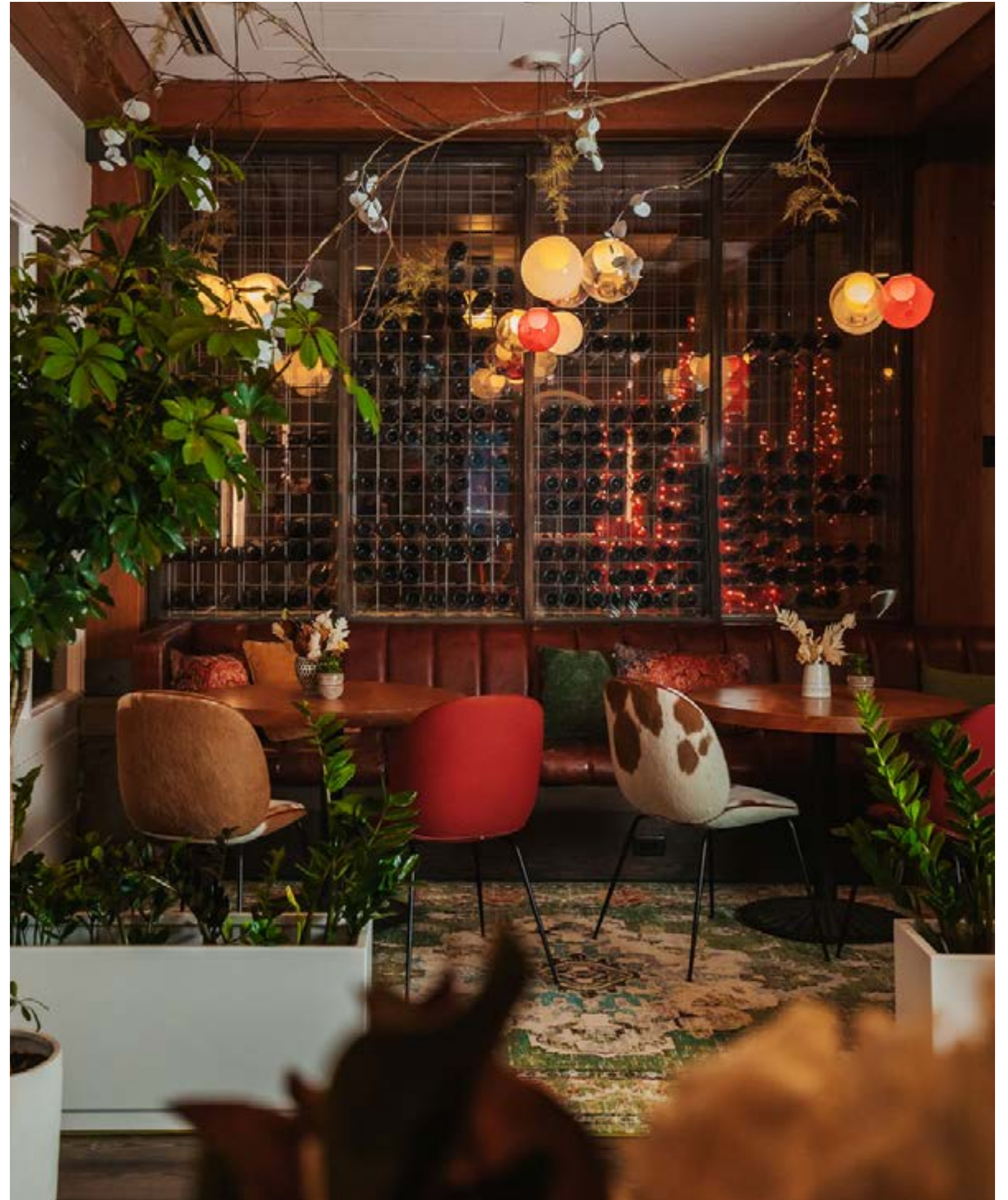


INSPIRED LAKEFRONT DINING

Discover cuisine as personalized and approachable as our service. We serve honest, innovative food and creative drinks in a unique lakeside setting. Whether you crave a sensational lakeside breakfast, a healthy lunch to fuel your adventures, or a social drink fireside, The Den, Cure Lounge & Patio and Fix Cafe offer something for all.

THE DEN

Nestled on the glacier fed Nita Lake, by the foot of Mt. Sproatt in Whistler, The Den celebrates the wilderness around us. We create our seasonal dishes with local products, artisan meats & cheeses and our garden-grown herbs & greens, with a strong emphasis on plant-based alternatives.





CURE LOUNGE & PATIO

A refreshing breeze over the lake in the summer, the warm glow of a fireplace in the winter - this is the essence of Cure Lounge & Patio at Nita Lake Lodge.

Created to be the cure for everyday distractions, it's a place to share, reconnect and naturally savor the best of Whistler.

From light bites to main dishes, delicious vegan options and refreshing craft beer, there is something on the menu for everyone.





Whether it's nourishing fuel for the day, or simply wanting to linger by the fire and watch the world happen, Fix Cafe at Nita Lake Lodge is a Creekside locals' favourite.

Fairtrade organic coffees, freshly baked pastries, homemade soups, sandwiches and pizza, fresh fruit and vegetable juices, smoothies and even local craft beer give you locally-sourced, freshly made options to get your fix for the day.



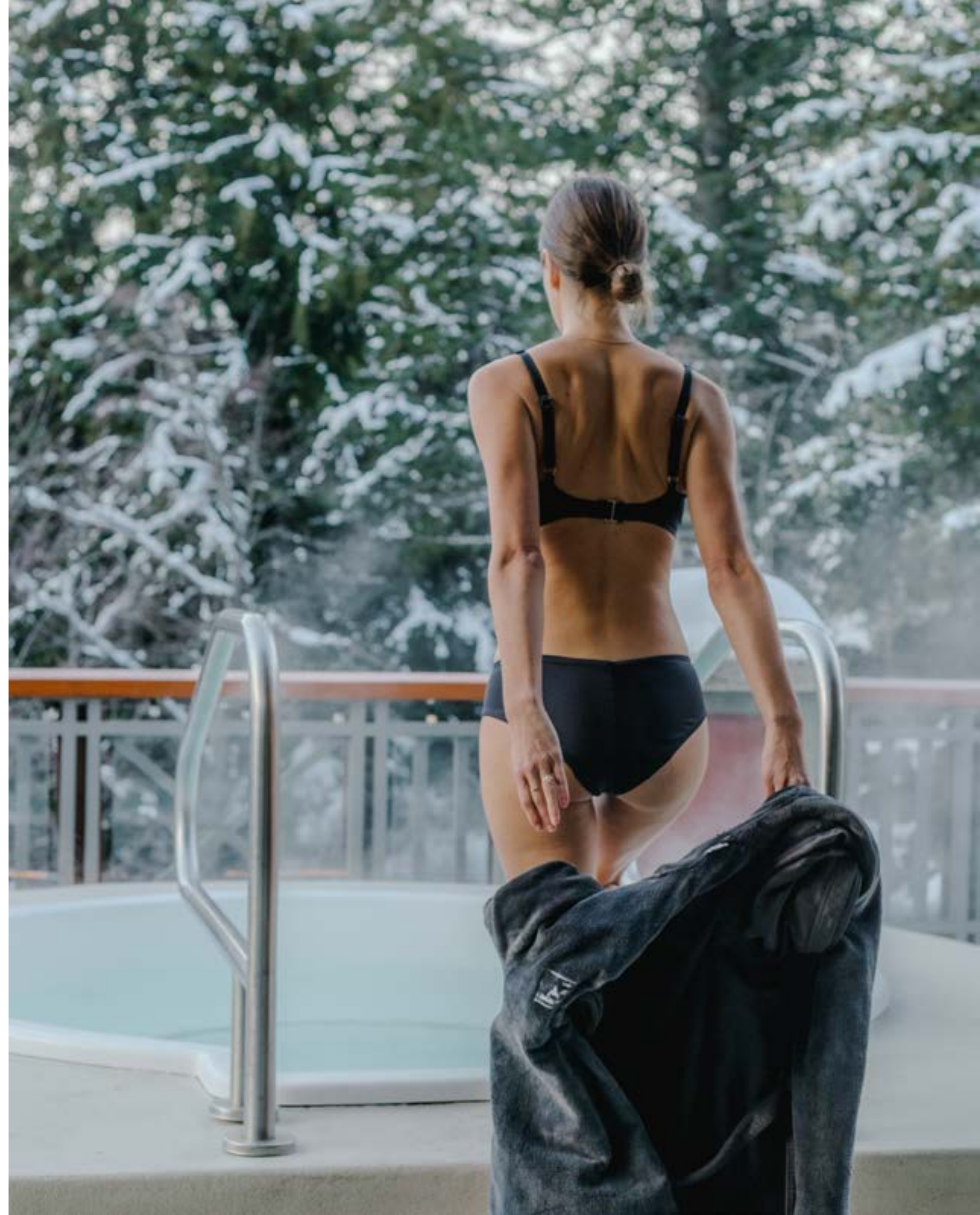
TRANSCENDENT WELLNESS

In a tranquil lakeside setting that is already a retreat from the everyday, The Spa at Nita Lake Lodge welcomes you to a transcendent wellness experience. From soothing and rejuvenating massages, scrubs and body treatments to the one-of-a kind Champagne Nail Bar.

The Spa is sure to restore, relax, and reinvigorate the senses. Together with rooftop hot tubs to take in the magnificent natural surroundings, the revitalizing eucalyptus steam room, and the serenity of the relaxation lounge, the award-winning Spa at Nita Lake Lodge is unmatched in Whistler.

The Spa at Nita Lake Lodge has a variety of new exciting and innovative technologies, including the latest in results-driven wellness technologies such as the Hydrafacial, Laser Genesis, Chemical Peels and body toning/sculpting from TruBody.

THE
SPA
AT NITA LAKE LODGE



A GENEROSITY OF EXPERIENCES

Wellness at Nita Lake Lodge is right at your fingertips. Revive with a freshly-made smoothie from Fix Cafe or rejuvenate with a reinvigorating spa treatment. Feeling more adventurous? Re-energize with a gym session, a day of skiing or enjoy a wander along the valley trail.



ON THE SNOW

Nita Lake Lodge is **less than 500 metres** from the newly updated Creekside Gondola at the base of Whistler Mountain.

With North America's premiere ski resort so close by, it makes sense that you'll want to explore in the snow. Creekside has everything you need to schedule ski or snowboard lessons, rent equipment, or treat yourself to something new.



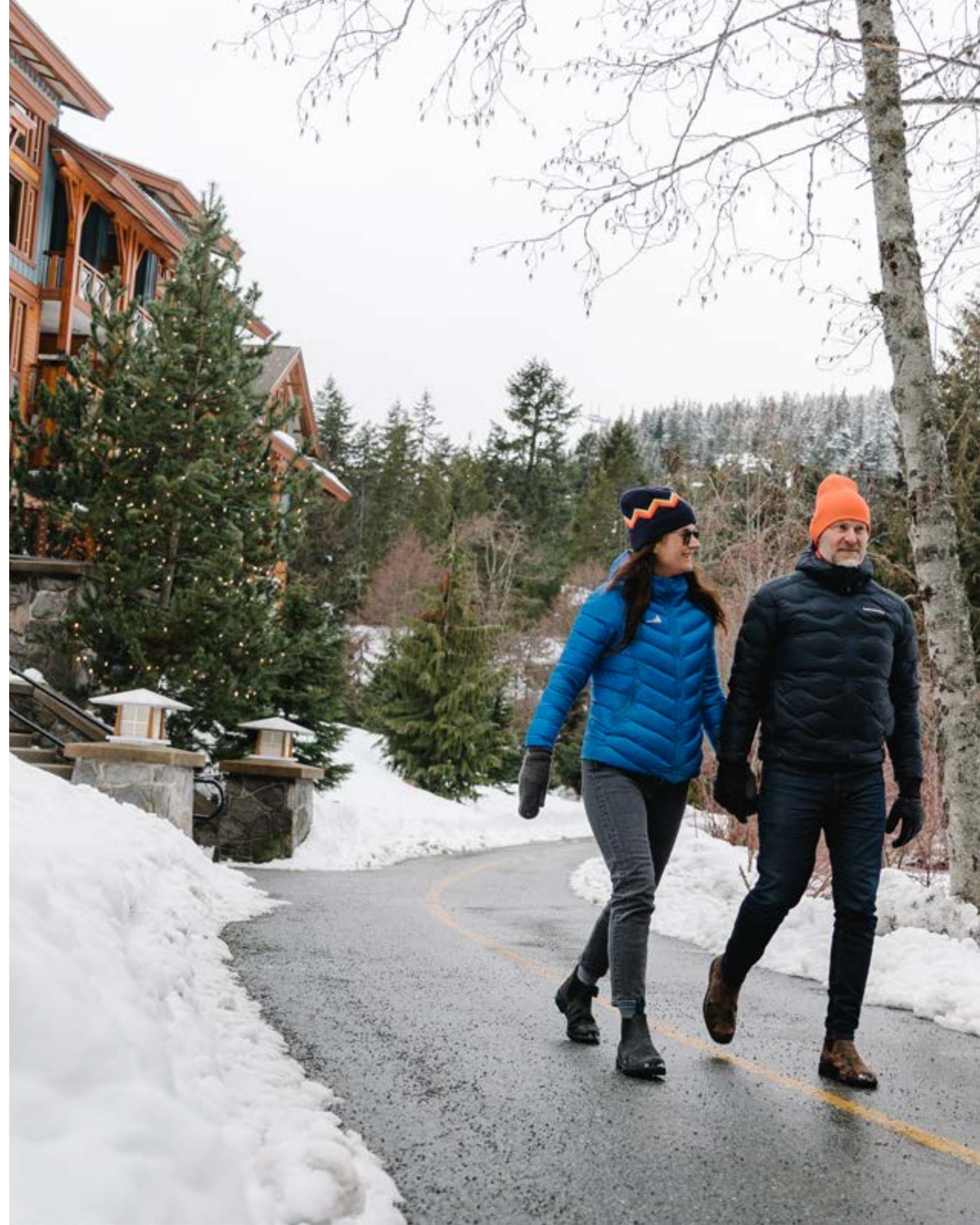
Photo credit: Guy Fattal, Tourism Whistler

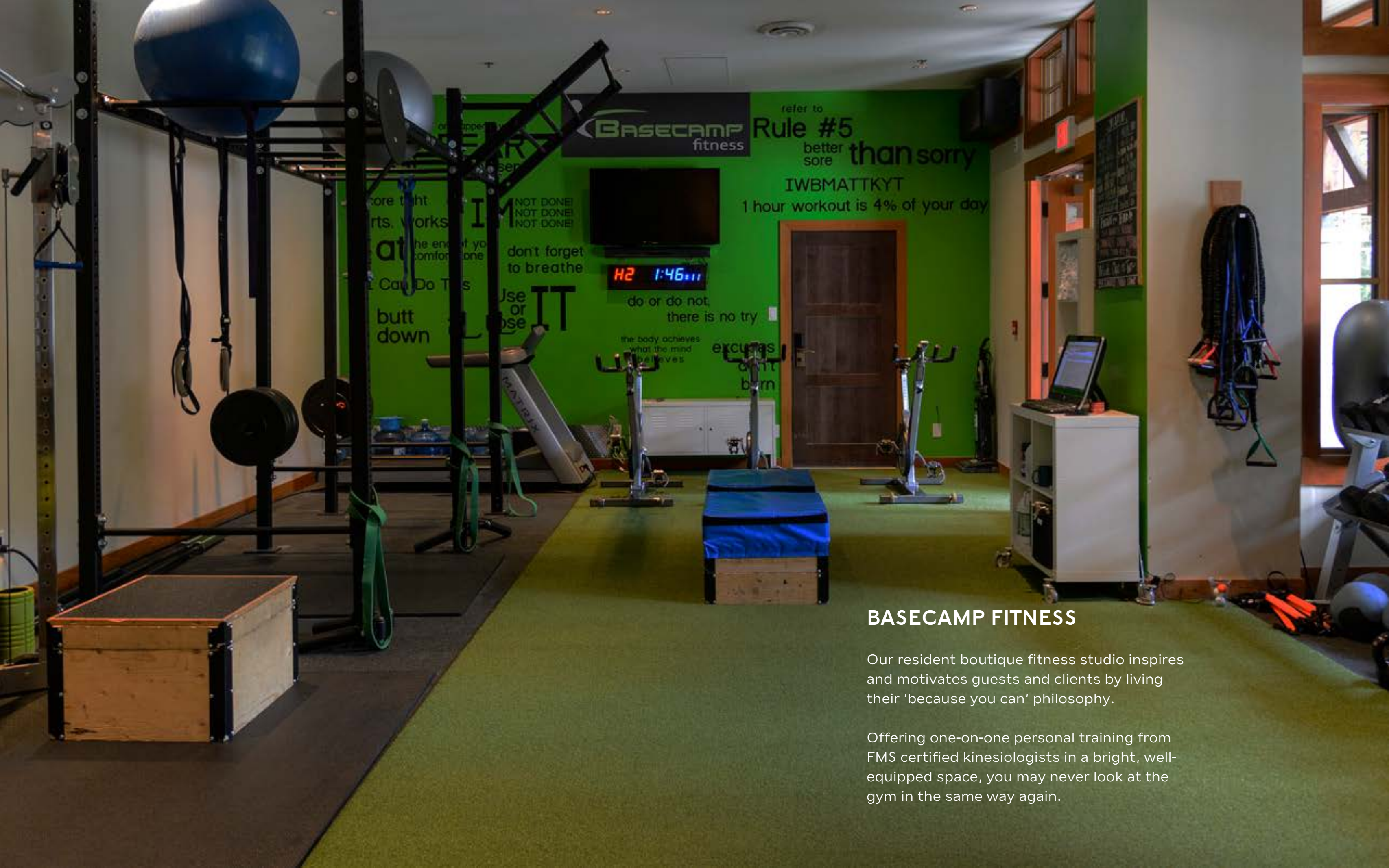


VALLEY TRAIL

Slip out for an early morning stroll around Nita Lake on the Valley Trail when the mountain air is at its freshest and the lake at its most serene.

Stretching 45km through Whistler's valley, the Valley Trail connects all of Whistler's neighborhoods, lakes and parks with a paved, accessible and scenic path that's perfect for biking, jogging, walking and sightseeing.





BASECAMP
fitness

refer to
Rule #5
better
sore **than sorry**
IWBMATTKYT
1 hour workout is 4% of your day

H2 1:46:11

BASECAMP FITNESS

Our resident boutique fitness studio inspires and motivates guests and clients by living their 'because you can' philosophy.

Offering one-on-one personal training from FMS certified kinesiologists in a bright, well-equipped space, you may never look at the gym in the same way again.



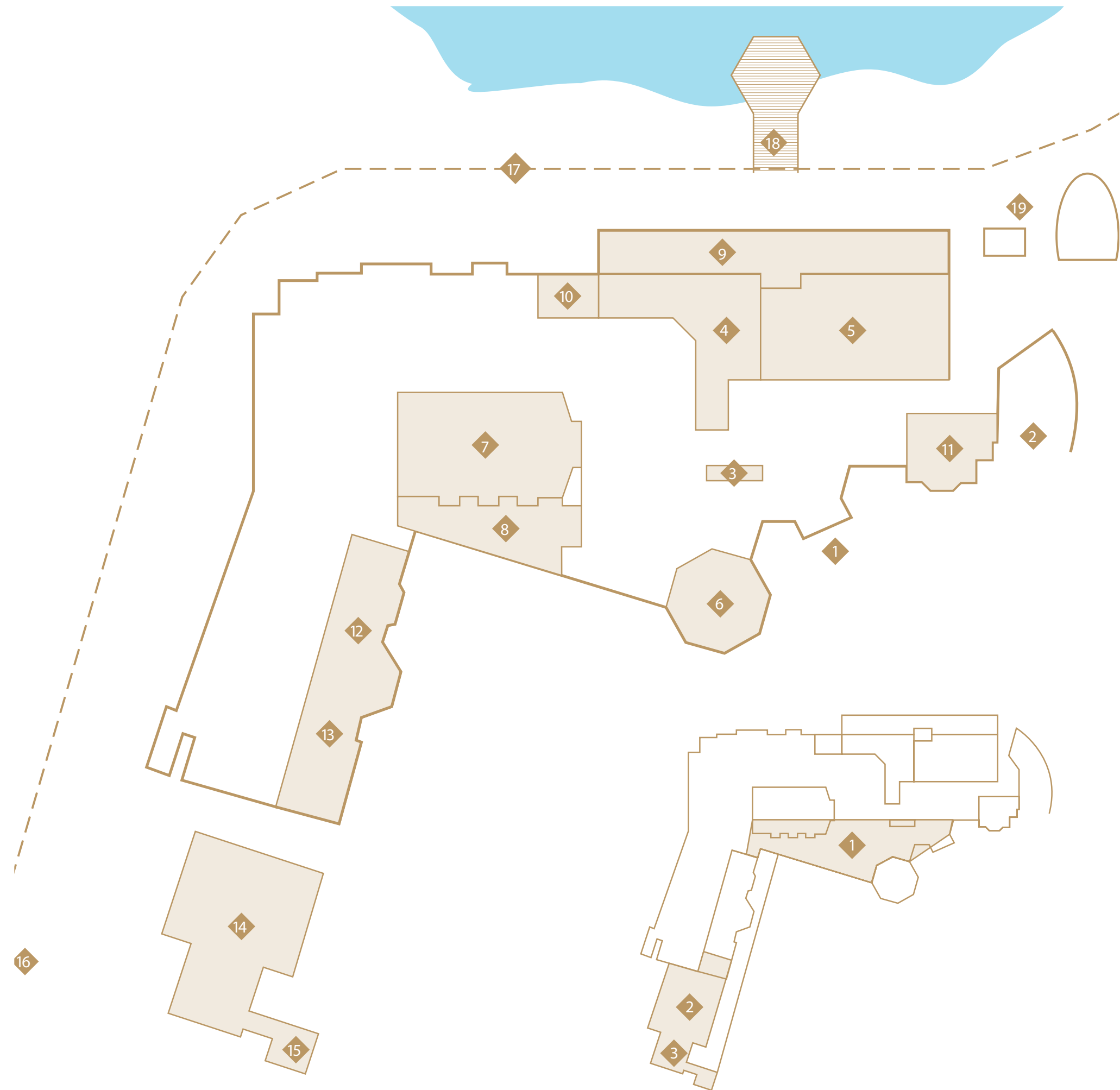
DISCOVER NITA

Take our courtesy shuttle or wander along the lakeside trail to the heart of Whistler. Located in the village of Creekside, less than 500 metres from the base of Whistler Mountain and the newly updated Creekside Gondola, Nita Lake Lodge offers great proximity to activities in all seasons.



With an array of services available and a welcoming team, we offer all the essentials for an unforgettable winter stay in Whistler, including:

- **Courtesy shuttle to Creekside & Whistler Village.**
- **Free, unlimited Wi-Fi.**
- **Lakeside plunge pool and hot tub.**
- **Award-winning, luxury spa.**
- **Ample underground parking.**
- **On-site fitness facility.**
- **Electric vehicle charging.**
- **Free snow shoe rental.**
- **Free fat bike rental.**
- **Complimentary ski lockers at the base of Whistler Mountain.**
- **Daily apres food and drinks offers at Cure Lounge.**
- **Cozy lakeside fire pits.**



LEGEND

1. Entrance
2. Underground Parking
3. Front Desk
4. The Den
5. Cure Lounge
6. Fix Cafe
7. Nita Room
8. Nita Room Foyer
9. Lakeside Patio
10. Private Dining Room
11. Library
12. Fitness Studio
13. Champagne Nail Bar
14. Train Station Functions
15. Custom Building Network
16. Rocky Mountaineer
17. Whistler's Valley Trail
18. Nita's Private Dock
19. Lakeside Plunge Pool and Hot tub

Second Floor

20. Rooftop Garden
21. The Spa at Nita Lake Lodge
22. Spa Hot Tub Deck (for guests of The Spa)

TERMS & CONDITIONS

GENERAL

Rates may not be disclosed to any other party without prior agreement of Nita Lake Lodge management. Additional room nights are available, subject to availability, at the same average rate as your purchased Pass Program. Rates disclosed in the rate chart are all prior to applicable taxes. Rates are subject to change if full payment not made by November 24th, 2024.

PAYMENT TERMS

100% of your selected program total, including applicable taxes, will be due on November 24th, 2024.

Once processed, these amounts are 100% non-refundable under any circumstance including, but not limited to: acts of God, war, riot, epidemic, pandemic, government act or restriction, fire, flood, hurricanes, in preparation of weather event forthcoming, any travel warning or health warning imposed by a government, the World Health Organization or the Center for Disease Control.

AVAILABLE TRAVEL DATES

Minimum 2 nights required each stay. Rates are valid only for stays from January 5th, 2025 – April 19th, 2025.

Blackout Dates:

January 17th - 19th 2025

February 14th - 22nd, 2025

INDIVIDUAL RESERVATION CANCELLATION POLICY

Date changes, for any reason including illness, require 7 days' notice to the hotel and are subject to availability. No shows, reservation cancellations or early departures within 7 days' of confirmed arrival date, forfeit those number of nights for use.

ADDITIONAL FEES

Self-parking fee of \$35 per night (plus applicable taxes) for additional vehicles.

Pet cleaning fee of \$35 per night (plus applicable taxes) if a pet stays in the room.

VIP GOLD DISCOUNT CARD TERMS

20% off at The Den, Cure Lounge & Patio and Fix Cafe. Excludes alcohol. Discounts at The Spa at Nita Lake Lodge exclude RMT, packages and cannot be combined with other offers.



nitalakelodge.com | info@nitalakelodge.com | [@nitalakelodge](https://www.instagram.com/nitalakelodge)

Local: 604.966.5700
International: 1.888.755.6482

2131 LAKE PLACID ROAD, WHISTLER, BC CANADA, V8E 0B2



NITA LAKE LODGE
RESORT & SPA