

HOTEL KRONE  UNTERSTRASS  
ZÜRICH



DAY RATES AND ROOM HIRE

*The perfect option for every business event*

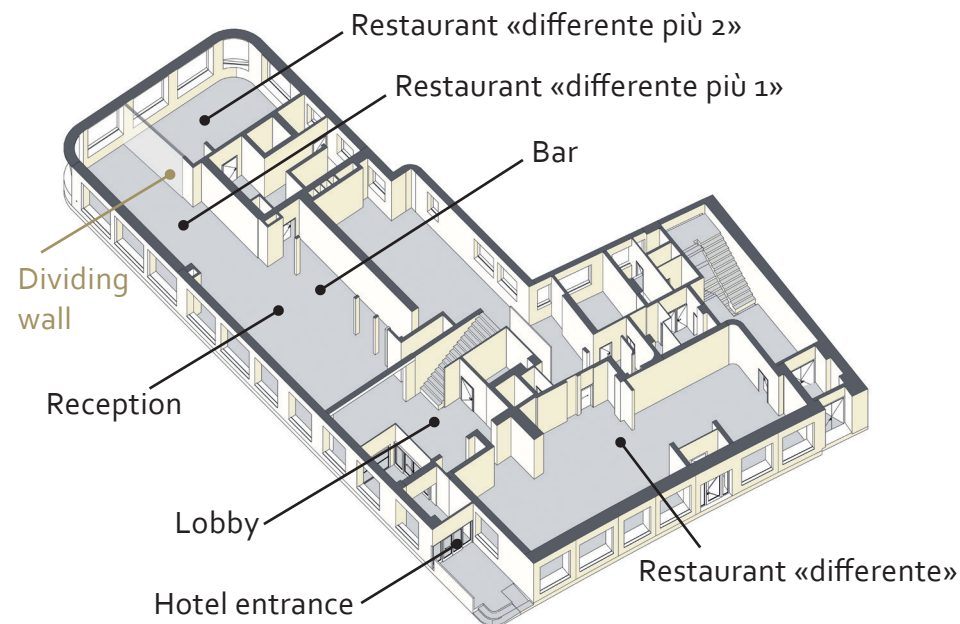
## ROOM HIRE

### *The right size at the right price*

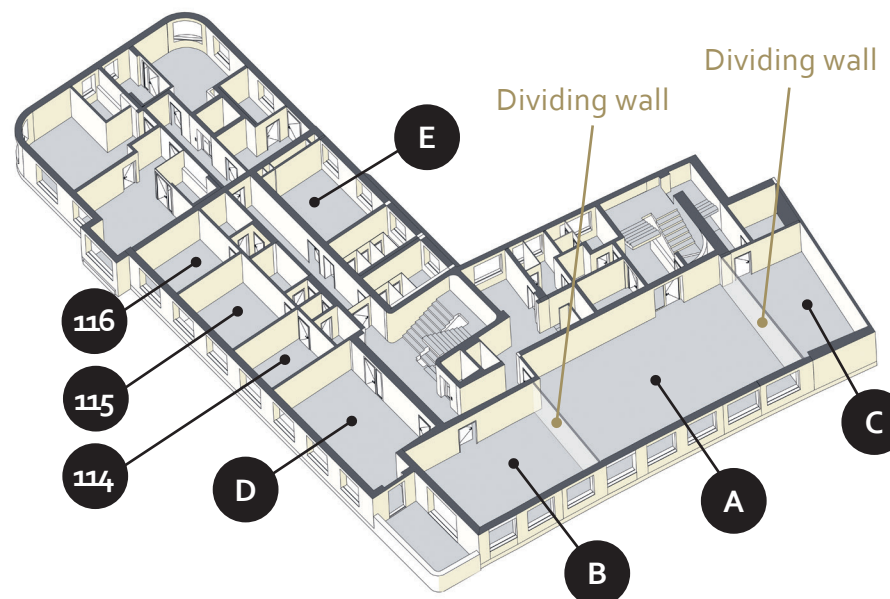
Our seminar rooms can also be hired without benefiting from the day rates. You can thus design your day and the culinary catering of your participants completely according to your wishes. Ask us about our packages: whether it's coffee during the break, a sandwich, standing lunch or a business lunch – we are happy to make it possible for you.

Thanks to the soundproofed dividing walls, the rooms can be adjusted to the required size, and the type of seating can be chosen. All rooms have air conditioning, natural light and up-to-date seminar equipment.

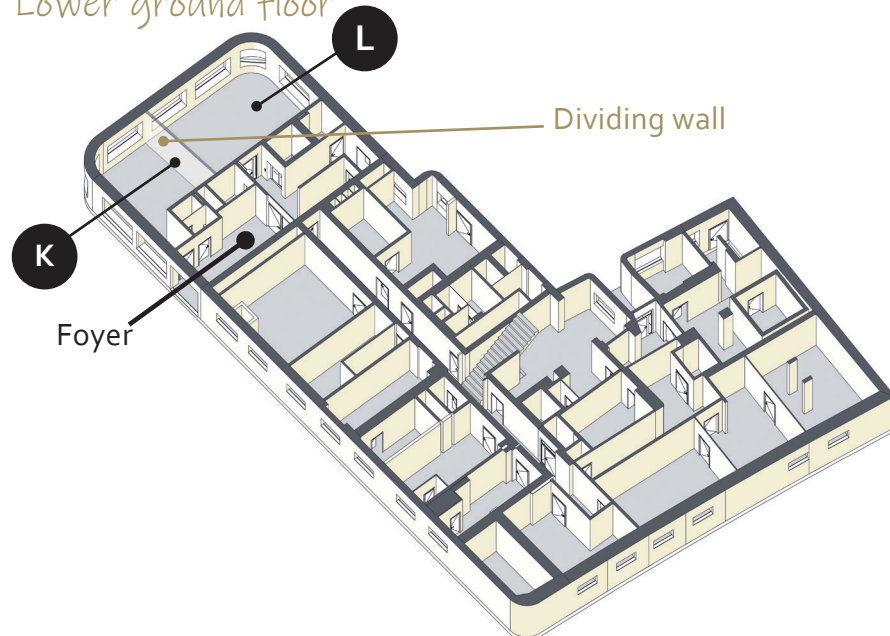
### *Ground floor*



### *First floor*




### *Lower ground floor*



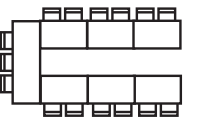
## HALL AND SEATING PLANS

From 0 to 200 in one building

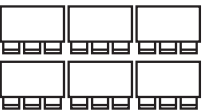
### THEATER

	A+B+C	A+B	A+C	A	B	C	D	E	114, 115, 116	K+L	K	L
	180 m <sup>2</sup>	145 m <sup>2</sup>	131 m <sup>2</sup>	97 m <sup>2</sup>	48 m <sup>2</sup>	34 m <sup>2</sup>	41 m <sup>2</sup>	20 m <sup>2</sup>	je 10 m <sup>2</sup>	60 m <sup>2</sup>	23 m <sup>2</sup>	37 m <sup>2</sup>
	200 people	160 people	120 people	100 people	40 people	20 people	30 people	-	10 people	50 people	16 people	36 people

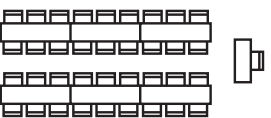
### U-SHAPED

	A+B+C	A+B	A+C	A	B	C	D	E	114, 115, 116	K+L	K	L
	180 m <sup>2</sup>	145 m <sup>2</sup>	131 m <sup>2</sup>	97 m <sup>2</sup>	48 m <sup>2</sup>	34 m <sup>2</sup>	41 m <sup>2</sup>	20 m <sup>2</sup>	je 10 m <sup>2</sup>	60 m <sup>2</sup>	23 m <sup>2</sup>	37 m <sup>2</sup>
	-	-	-	38 people	22 people	10 people	16 people	-	-	26 people	10 people	14 people


### SEMINAR

	A+B+C	A+B	A+C	A	B	C	D	E	114, 115, 116	K+L	K	L
	180 m <sup>2</sup>	145 m <sup>2</sup>	131 m <sup>2</sup>	97 m <sup>2</sup>	48 m <sup>2</sup>	34 m <sup>2</sup>	41 m <sup>2</sup>	20 m <sup>2</sup>	je 10 m <sup>2</sup>	60 m <sup>2</sup>	23 m <sup>2</sup>	37 m <sup>2</sup>
	90 people	80 people	60 people	55 people	24 people	12 people	15 people	-	-	30 people	10 people	16 people

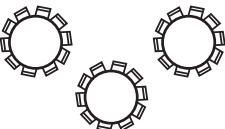
### ASSEMBLY

	A+B+C	A+B	A+C	A	B	C	D	E	114, 115, 116	K+L	K	L
	180 m <sup>2</sup>	145 m <sup>2</sup>	131 m <sup>2</sup>	97 m <sup>2</sup>	48 m <sup>2</sup>	34 m <sup>2</sup>	41 m <sup>2</sup>	20 m <sup>2</sup>	je 10 m <sup>2</sup>	60 m <sup>2</sup>	23 m <sup>2</sup>	37 m <sup>2</sup>
	160 people	150 people	110 people	90 people	40 people	20 people	24 people	-	-	50 people	16 people	30 people

### LONG ROWS TABLE

	A+B+C	A+B	A+C	A	B	C	D	E	114, 115, 116	K+L	K	L
	180 m <sup>2</sup>	145 m <sup>2</sup>	131 m <sup>2</sup>	97 m <sup>2</sup>	48 m <sup>2</sup>	34 m <sup>2</sup>	41 m <sup>2</sup>	20 m <sup>2</sup>	je 10 m <sup>2</sup>	60 m <sup>2</sup>	23 m <sup>2</sup>	37 m <sup>2</sup>
	-	-	-	40 people	24 people	16 people	20 people	8 people	4 - 6 people	24 people	10 people	16 people

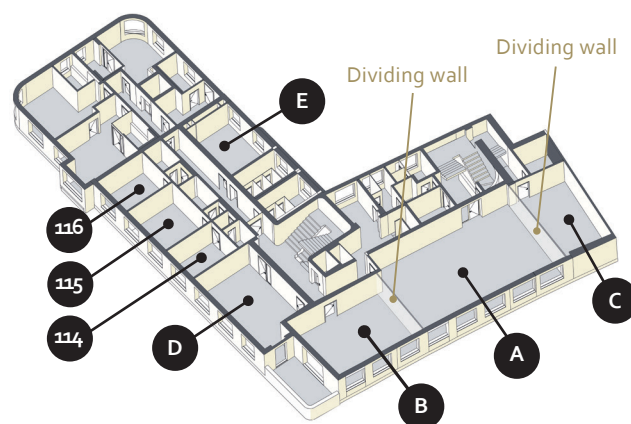
### BANQUET

	A+B+C	A+B	A+C	A	B	C	D	E	114, 115, 116	K+L	K	L
	180 m <sup>2</sup>	145 m <sup>2</sup>	131 m <sup>2</sup>	97 m <sup>2</sup>	48 m <sup>2</sup>	34 m <sup>2</sup>	41 m <sup>2</sup>	20 m <sup>2</sup>	je 10 m <sup>2</sup>	60 m <sup>2</sup>	23 m <sup>2</sup>	37 m <sup>2</sup>
	120 people	100 people	70 people	60 people	30 people	-	20 people	-	-	-	-	-

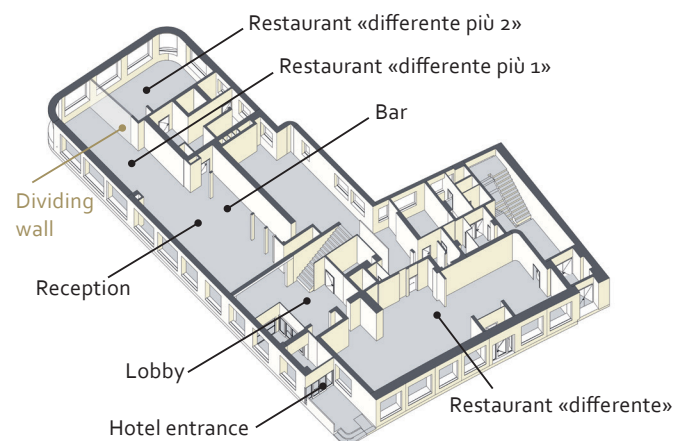
## HALL AND SEATING PLANS

### Corona-compliant versions with 1.5 meter spacing version

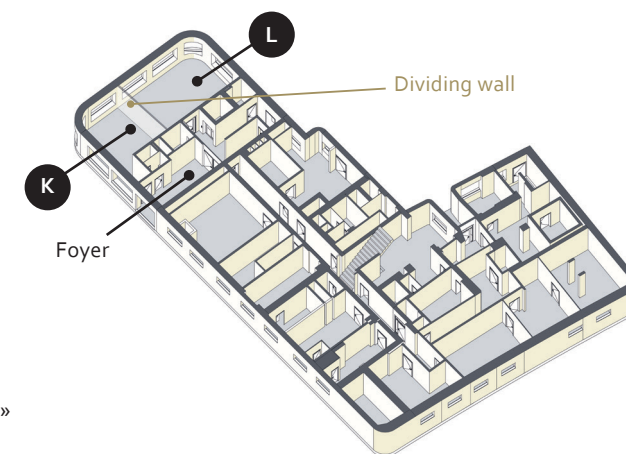
First floor



Ground floor



Lower ground floor



## THEATER

	A+B+C	A+B	A+C	A	B	C	D	E	114, 115, 116	K+L	K	L
	180 m²	145 m²	131 m²	97 m²	48 m²	34 m²	41 m²	20 m²	je 10 m²	60 m²	23 m²	37 m²
	-	41 people	-	23 people	9 people	6 people	9 people	-	-	15 people	-	-

## U-SHAPED

	A+B+C	A+B	A+C	A	B	C	D	E	114, 115, 116	K+L	K	L
	180 m²	145 m²	131 m²	97 m²	48 m²	34 m²	41 m²	20 m²	je 10 m²	60 m²	23 m²	37 m²
	-	20 people	-	11 people	6 people	5 people	5 people	-	-	9 people	-	-

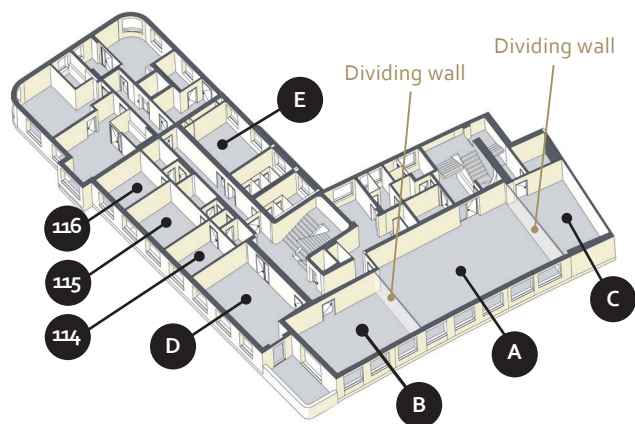
## SEMINAR

	A+B+C	A+B	A+C	A	B	C	D	E	114, 115, 116	K+L	K	L
	180 m²	145 m²	131 m²	97 m²	48 m²	34 m²	41 m²	20 m²	je 10 m²	60 m²	23 m²	37 m²
	-	31 people	-	20 people	9 people	6 Pers.	9 people	-	-	11 people	-	-

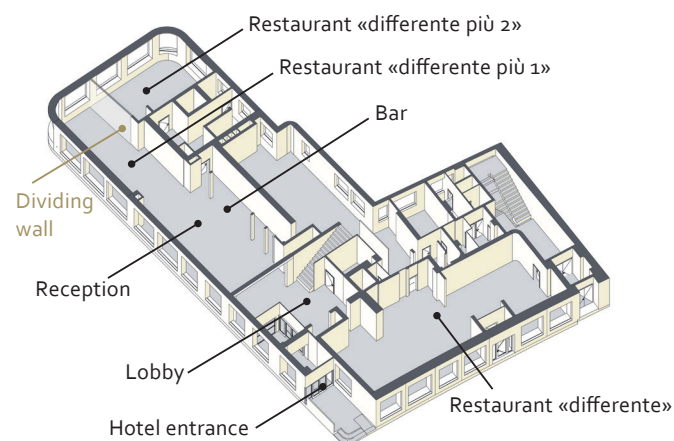
These versions involve a lot of space for the participants. Due to this, there is a surcharge of the room rent.

## ROOM HIRE

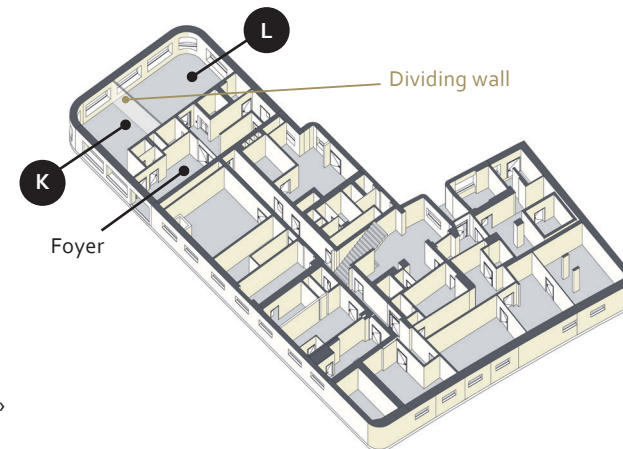
First floor



Ground floor



Lower ground floor



	A+B+C	A+B	A+C	A	B	C	D	E	114 115 116	K+L	K	L
Size	180 m <sup>2</sup>	145 m <sup>2</sup>	131 m <sup>2</sup>	97 m <sup>2</sup>	48 m <sup>2</sup>	34 m <sup>2</sup>	41 m <sup>2</sup>	20 m <sup>2</sup>	10 m <sup>2</sup>	60 m <sup>2</sup>	23 m <sup>2</sup>	37 m <sup>2</sup>
L x B (m)	24.20 x 7.80	20.20 x 7.80	16.40 x 7.80	12.40 x 7.80	7.80 x 6.10	7.80 x 4.00	5.40 x 7.30	5.20 x 3.60	ca. 3.00 x 3.50	11.5 x 5.10	4.50 x 5.10	7.00 x 5.10
Mornings until 12.00 noon	from 1250.-	from 1050.-	from 950.-	from 700.-	from 450.-	from 250.-	from 350.-	from 300.-	from 150.-	from 550.-	from 250.-	from 350.-
Afternoons 12.30-5.30 p.m.	from 1250.-	from 1050.-	from 950.-	from 700.-	from 450.-	from 250.-	from 350.-	from 300.-	from 150.-	from 550.-	from 250.-	from 350.-
Evenings* from 6.00 p.m.	from 850.-	from 700.-	from 600.-	from 550.-	from 350.-	from 250.-	from 350.-	from 250.-	-	from 550.-	from 250.-	from 300.-
from 6.45 p.m.	from 500.-	from 400.-	from 350.-	from 300.-	from 250.-	from 150.-	from 200.-	from 150.-	-	from 350.-	from 150.-	from 250.-
Full day until 5.30 p.m.	from 2000.-	from 1800.-	from 1500.-	from 1200.-	from 750.-	from 400.-	from 600.-	from 500.-	from 200.-	from 990.-	from 450.-	from 600.-
Surcharge 24 h	+ 300.-	+ 300.-	+ 300.-	+ 200.-	+ 200.-	+ 100.-	+ 100.-	+ 100.-	+ 50.-	+ 250.-	+ 100.-	+ 150.-

\* Events requiring a greater amount preparation (e.g. special seating) will incur an additional charge (CHF 45.00 per employee per hour).

All rooms have natural light and a high-performance air-conditioning system. Room hire includes use of the installed technical equipment, suitable seating and statutory VAT. All prices in CHF.