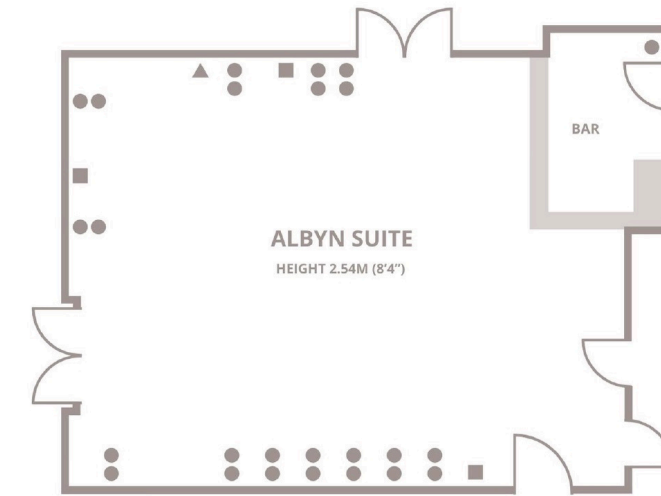
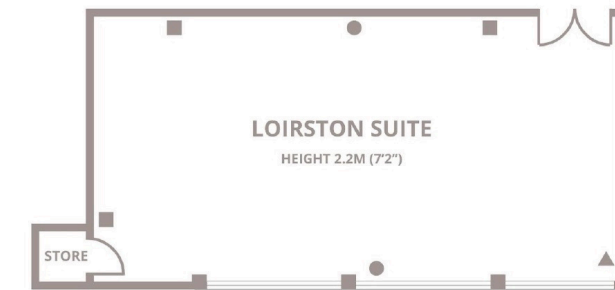
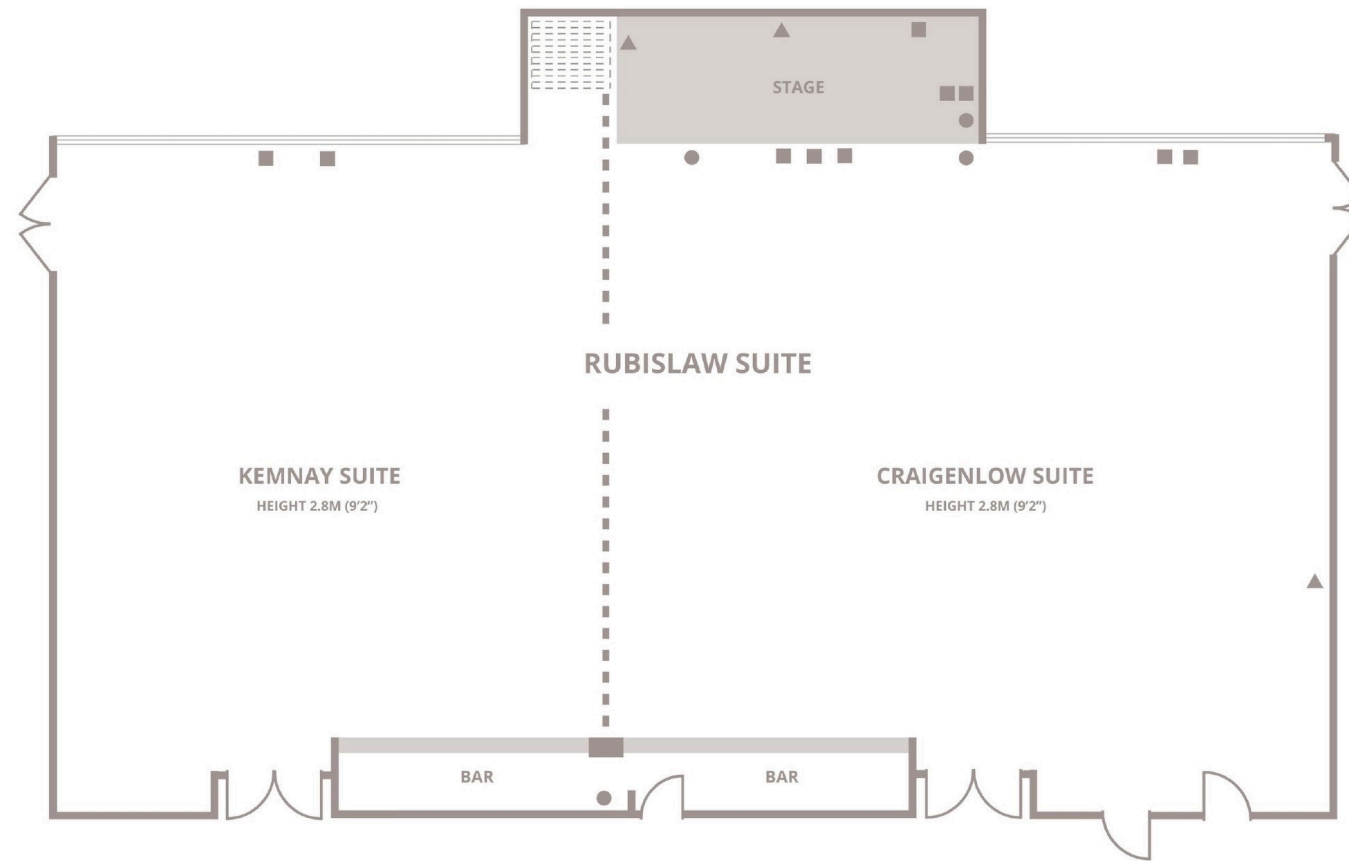
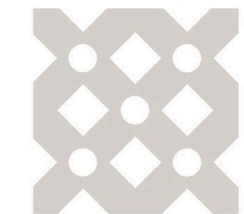
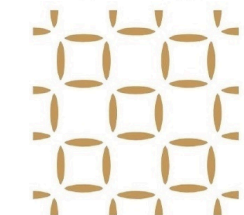
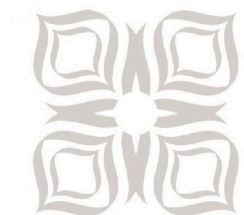
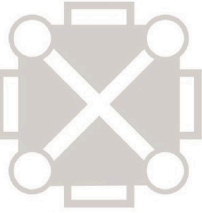
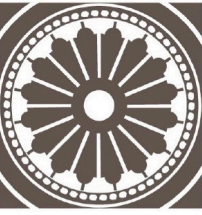


FLOORPLANS



▲ AERIAL SOCKET ■ 13 AMP SOCKET DOUBLE ● TELEPHONE POINT - - - - MOVABLE ACOUSTIC PARTITION



ROOM CAPACITIES

	Theatre	Theatre (Back Projection)	Classroom	Boardroom	U-Shape	Cabaret (Full rounds)	Cabaret (Half rounds)	Banquet	Dinner Dance	Length (m)	Width	Height	Controls in Room	Tungsten	Dimmers	Blackout	Natural Light	3 Phase	Air Conditioning	ISDN 2	Free WiFi
Rubislaw Suite	400	-	144	70	70	180	128	300	220	24.05	11	2.8	•	-	•	•	•	•	•	•	•
Craigenlow Suite	180	-	72	30	35	90	72	140	80	13.45	11	2.8	•	-	•	•	•	•	•	•	•
Kemnay Suite	100	-	60	30	35	60	56	100	-	10.6	11	2.8	•	-	•	•	•	-	•	•	•
Albyn Suite	60	-	27	20	25	50	28	50	-	10.5	7.8	2.54	•	-	-	•	-	-	•	•	•
Grandholm Suite	100	-	42	30	35	60	48	60	-	15.85	6.3	2.4	•	-	-	-	•	-	-	•	•
Loirston Suite	45	-	27	22	22	30	16	-	-	9.8	4.95	2.2	•	-	-	-	•	-	-	•	•
Craigton Suite	30	-	18	14	14	20	12	-	-	7.9	4.96	2.4	•	-	-	-	•	-	-	•	•
Syndicate Rooms x5	20	-	-	12	-	-	-	-	-	8.15	3.32	2.4	•	-	•	-	•	-	•	•	•

• Available - Not Available