



ENJOY YOUR STAY IN VIBRANT VIENNA!

Rooms

168 rooms and 5 suites / extra-comfortable box-spring bed / soundproofed windows / individually adjustable air-conditioning / free high-speed WiFi / laptop-sized safe / one free bottle of mineral water / flat-screen TV with radio / comfortable work corner / glass and granite bathroom / high-quality Malin+Goetz skincare products / tea and coffee station / non-smoking rooms only

Cuisine

Generous regional breakfast buffet / restaurant / bar / international and regional specialties

Fitness & wellness

Sauna / natural sauna / relaxation area / gym

We are deeply committed to the environment and have been honored with the Austrian Ecolabel and the EU Ecolabel.

FLEMINGS
HOTELS

FLEMINGS HOTEL WIEN-STADTHALLE

Neubaugürtel 26-28
1070 Vienna



Contact

+43 1 227 37-0

Event sales: +43 1 227 37-5016

conference.vie@flemings-hotels.com

www.flemings-hotels.com



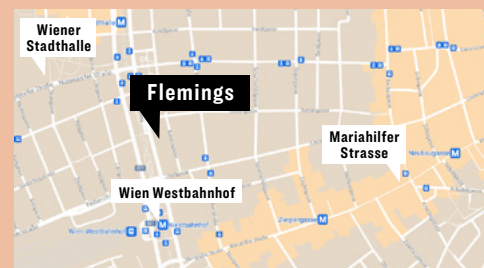
Mobility

14 parking spaces, price per day: €28 / 2 electric charging stations (Tesla-compatible) / opposite Vienna West station



Distances

Wien Westbahnhof 0.5 km / Mariahilfer Strasse 0.5 km / Wiener Stadthalle 0.5 km / Naschmarkt 1.9 km / city center 2.3 km / Schönbrunn Palace 2.6 km / central train station 4.2 km / Prater 5.5 km / Exhibition and Congress Center 7.5 km / Vienna Airport (VIE) 19 km



Map data ©2022
GeoBasis-DE/BKG (©2009), Google



Technical equipment

Modern "Meeting Owl" video conferencing technology for holding high-quality hybrid meetings (up to 10 people)

State-of-the-art conference technology, such as ClickShare systems for easy presentation sharing / WiFi / projectors / screens / cameras and other technical equipment also provided













Service

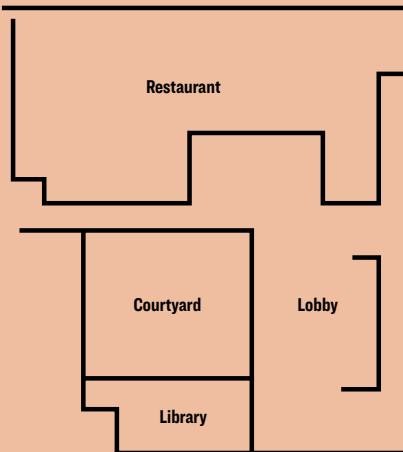
Exclusive meeting concierge available for the duration of your stay / enhanced hygiene concept, the Flemings' Feel Safe Promise



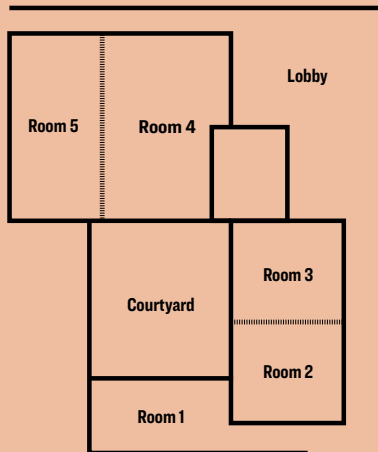
FUNCTION ROOMS

	 Floor	 Height	 Surface area	 Natural light	 Classroom	 Theater	 Banquet	 Reception	 U-shaped	 Conference style
Library	GF	3.50 m	64,3 m ²	yes	–	–	–	–	–	20
Room 1	B1	3.20 m	57,3 m ²	yes	20	46	20	60	20	20
Room 2	B1	3.20 m	63,2 m ²	yes	20	51	40	50	19	20
Room 3	B1	3.20 m	57,2 m ²	yes	20	42	30	50	19	16
Room 4	B1	3.20 m	135,3 m ²	yes	73	125	70	130	28	32
Room 5	B1	3.20 m	94,3 m ²	no	53	93	40	90	31	32
Room 6	B2	3.20 m	57,3 m ²	yes	20	46	20	60	20	20
Room 7	B2	3.20 m	63,2 m ²	yes	20	51	40	50	19	20
Room 8	B2	3.20 m	59,2 m ²	yes	20	43	30	50	19	16
Room 9	B2	3.20 m	135,5 m ²	yes	73	125	70	130	28	32
Room 10	B2	3.20 m	96,2 m ²	no	53	95	50	90	31	32
Room 2+3	B1	3.20 m	120,3 m ²	yes	65	105	70	110	30	36
Room 4+5	B1	3.20 m	229,8 m ²	yes	150	218	130	220	42	64
Room 7+8	B2	3.20 m	122,3 m ²	yes	65	105	70	110	30	36
Room 9+10	B2	3.20 m	231,7 m ²	yes	150	218	130	220	42	64

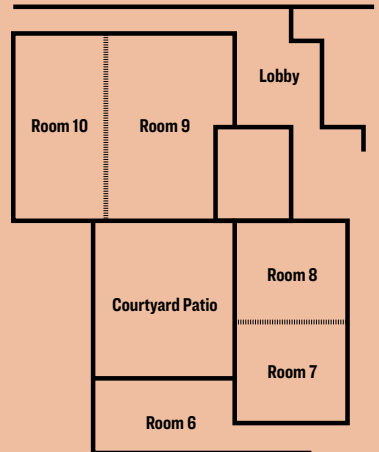
GROUND FLOOR



FIRST BASEMENT



SECOND BASEMENT



BOOK NOW!

