



SERVICES DESCRIPTION

TO ASSIST HOTEL CONCIERGE

TERMS & CONDITIONS APPLY.
SERVICE HOURS: 7AM - 10PM (7 DAYS A WEEK)

TERMS AND CONDITIONS

CANCELLATION POLICY

All bookings are non-refundable. A 20% surcharge will apply for all bookings during Public Holidays. Special rates apply on Christmas Eve, Christmas Day, New Years Eve, New Years Day, Good Friday and Easter Sunday.

TERMS AND CONDITIONS

BOOKINGS

All bookings require a minimum of 2 hours' notice.

All bookings must be confirmed before 8 pm.

Urgent bookings (within the hour) will incur a \$100 fee.

After-hour bookings will incur a \$150 p/h fee as a courtesy to our team.

Minimum call-out fee for a LUXit professional is \$150

CHANGES

All booking changes must be made between 7am & 8pm.

All booking changes require a minimum of 4 hours notice.

All booking changes will incur a \$50 fee.

If the Artist/Therapist is required to wait, a \$150 p/h waiting fee will be incurred.

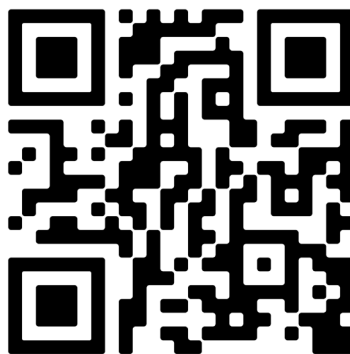
URGENT BOOKINGS

Keep in mind traffic conditions such as peak hour and road closures may cause delays that will affect urgent bookings. To ensure the guest is attended to as soon as possible, please assist us with parking.

CONFIDENTIALITY

PLEASE NOTE: This document is intended for LUXit Professionals and hotel concierge staff only and should not be forwarded to third parties. The information in this document is confidential. It may be legally privileged information or subject to copyright. If you receive this document by mistake, please notify us or hotel staff and do not use the information in any way.

BOOK ONLINE OR CALL US ON 0452 611 880



HAIR SERVICES

!! IMPORTANT: We recommend that the Guest wash their hair before the booking, or you can suggest adding the wash as an **Add-On**.

SIGNATURE BLOW DRY

50 MINS

Smooth blow-dry finished with heat styling to guest's preference (straightening, bouncy curls or waves). Hair is styled down & not tied up. Also known as a "Blow Out".

Equipment: All provided by LUXit Professional.

UPSTYLE

60 MINS

Includes a **Signature Blow Dry** with up-styling finish e.g. pinned up in an intricate bun or including ponytails. Also known as an "Up-do".

Equipment: All provided by LUXit Professional.

Notes: Any style with pinning, clipping, or braiding requires more time and is deemed an upstyle.

HOLLYWOOD WAVES

60 MINS

Includes a **Signature Blow Dry**. Hollywood Waves run in one continuous line, creating a sleek and stylish retro effect.

Equipment: All provided by LUXit Professional.

CUT & BLOW DRY

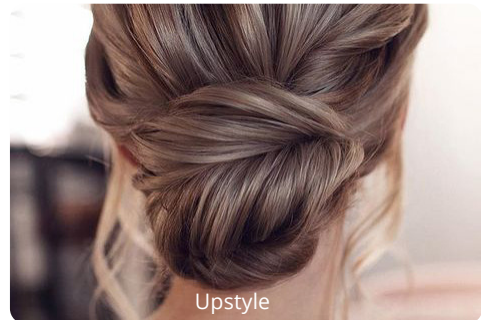
70 MINS

LUXit Professional will cut & style to guest's preference followed by a **Signature Blow Dry**.

Equipment: All provided by LUXit Professional.



Signature Blow Dry



Upstyle



Hollywood Waves

ADD-ONS / SURCHARGE

!! IMPORTANT: **ADD ONS** cannot be booked as a standalone appointment.

WASH (ADD ON)

+ 20 MINS

LUXit Professional will shampoo & condition guest's hair.

Equipment: LUXit Professional will bring all equipment including salon-grade shampoo, conditioner, and portable wash basin.

LONG HAIR OR EXTENSIONS SURCHARGE

+ 30 MINS

If guest's hair is past shoulder blades or has hair extensions the stylist will require more time.



MAKEUP SERVICES

!! IMPORTANT: Ensure guest room has enough table-space for equipment.

MAKEUP (INCL. LASHES)

60 MINS

LUXit Professional will provide a complete makeup application with lashes included. LUXit Professional will have a full kit using a range of the latest premium products and will use disposable equipment for hygiene purposes.

Equipment: All provided by LUXit Professional.

Notes: Guests must have a clean bare face in preparation for the booking.



MAKEUP & HAIR SERVICES

!! IMPORTANT: As this combines two services, sufficient time is needed. If the guest is short on time, we can send two LUXit Professionals, and will be charged as two separate services. Guests must have a clean bare face and semi dry or dry hair in preparation for the booking, or you can suggest adding the wash as an **Add-On**.

MAKEUP & SIGNATURE BLOW DRY

110 MINS

Includes **Signature Blow Dry** and a complete makeup application with lashes included.

Equipment: All provided by LUXit Professional.

MAKEUP & UPSTYLE

120 MINS

Includes **Upstyle** and a complete makeup application with lashes included.

Equipment: All provided by LUXit Professional.

Notes: **Upstyle** includes **Signature Blow Dry**.

MAKEUP & HOLLYWOOD WAVES

120 MINS

Includes **Hollywood Waves** and a complete makeup application with lashes included.

Equipment: All provided by LUXit Professional.

Notes: **Hollywood Waves** include **Signature Blow Dry**.



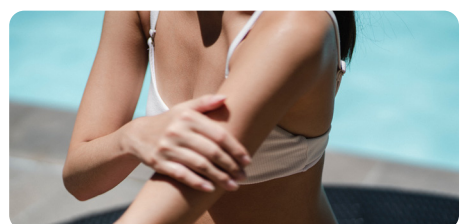
SPRAY TAN

30 MINS

Full body spray tan using premium/organic/natural products.

Equipment: All provided by LUXit professional. Tent & towels.

Notes: Guest can choose from a rapid tan (2 hour developing time) or an overnight tan (8 hour developing time).



NAILS SERVICES

!! IMPORTANT: Questions to ask prior to booking -
What do they have on their nails now? What service are they after?

LUXURY MANICURE & PEDICURE

110 MINS

Includes shaping, cleaning and cuticle work with guest's choice of coloured nail polish. Also includes cuticle oil, and a hand/foot massage.

Equipment: All provided by LUXit Professional. Includes soak bowls and towels.



ADD-ONS

!! IMPORTANT: ADD ONS cannot be booked as a standalone appointment.

FOR INDIVIDUAL MANICURE OR PEDICURE

+ 45 MINS/ \$200

+ 55 MINS / \$220

GEL/SHELLAC FINISH (ADD ON)

+ 15 MINS

Notes: If a guest has existing shellac polish, guest must book [Shellac Removal](#) prior to [Gel/Shellac Finish](#).

SHELLAC REMOVAL (ADD ON)

+ 15 MINS

Must be booked prior to a manicure/pedicure booking. Only needed if nails currently have shellac paint.

Equipment: All provided by LUXit Professional.

Notes: Allow an extra 20 mins to remove existing gel/shellac.



MEN'S GROOMING

MEN'S HAIRCUT & STYLE/FADING

50 MINS

LUXit Professional will provide cut & style, and grooming tailored to guest's individual look.

Equipment: All provided by LUXit Professional.

Notes: Guest should have clean hair before the service or you can suggest to [Add Wash](#) to the booking.



ADD-ONS

!! IMPORTANT: ADD ONS cannot be booked as a standalone appointment.

WASH (ADD ON)

+ 15 MINS

LUXit Professional will shampoo & condition guest's hair with **Men's Haircut & Style/Fading**.

Equipment: LUXit Professional will bring all equipment including shampoo & conditioner, and a portable wash basin.

THROAT SHAVING/ BEARD SCULPTING (ADD ON)

+ 15 MINS

LUXit Professional will perform either throat shaving or beard sculpting according to guest's preference.

Equipment: All provided by LUXit Professional.



WELLNESS SERVICES

!! IMPORTANT: Ensure the room is large enough for the massage bed(s). Please advise if you prefer our team to use the hotel towels.

DELUXE FACIAL

70 MINS

Includes a face massage, and mask using premium, organic, or natural products. Customised to the guest's skin type.

Equipment: All provided by LUXit Professional. Includes products, towels, and massage bed.

RELAXATION MASSAGE

60 MINS

90 MINS

120 MINS

Relaxing, soothing and rejuvenating massage.

Equipment: All provided by LUXit Professional. Includes products, towels, and massage bed.

Notes: Female and male therapists available.

DEEP TISSUE MASSAGE

60 MINS

90 MINS

120 MINS

A firmer massage to ease tensions in muscles.

Equipment: All provided by LUXit Professional. Includes products, towels, and massage bed.

Notes: Female and male therapists available.



HEALTH & WELLBEING SERVICES

!! IMPORTANT: Please provide guest with a hotel towel and water for personal training services.

PERSONAL TRAINING / YOGA

45 MINS

Options include: stretching, PT, yoga, and mat pilates. Can be performed in the hotel room, hotel gym or outside weather permitting.

Equipment: All provided by LUXit Professional.

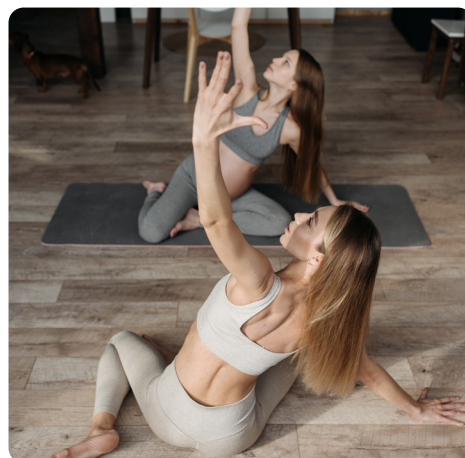
Notes: Guests will need to complete a fitness evaluation form prior to the booking.

TENNIS SESSION

60 MINS

Guest will be guided through a one-on-one tennis session.

Equipment: All provided by LUXit Professional.



LIFESTYLE SERVICES

NANNIES

MINIMUM 3 HOURS

LUXit Professional will account for children's interests, day and night routines as well as health concerns.

Notes: All nannies are qualified, reference-checked and have a Working With Children Check and, First Aid Certificate.

Parents will need to complete a consent form before the booking which will be sent electronically (text/email). We recommend advising parents to bring some toys and/or activities to entertain the children. Minimum 3 hour service.



PET MINDING

MINIMUM 3 HOURS

LUXit Professional will supervise and follow daily routines, interests and walks on request.

Equipment: All provided by LUXit Professional. Includes a leash, waste bags, dog treats and toys.

Notes: Minimum 3 hour service.



EQUIPMENT

!! IMPORTANT: Guest rooms need to be large enough to comfortably arrange the equipment appropriate for the guest's booking. Please refer to the visuals below for equipment provided by LUXit Professionals.

PORTABLE WASH BASIN



MASSAGE BED



SPRAY TAN TENT



HOTEL TOWELS

Please advise if you prefer our team to use your hotel towels.

TOWELS REQUIRED PER GUEST

- 2 x Bath Sheets
- 2 x Hand Towels
- 1 x Bath Towel
- 1 x Flat Sheet