



### MONDAY EVENING

Doors open: 5:30pm  
Admission open: 6pm  
Warm ups: 7pm  
Main session: 8pm

### TUESDAY EVENING

Queen of Hearts  
Doors open: 5pm  
Admission: 5:30pm  
Mini session I: 6pm  
Mini session II: 8pm

### WEDNESDAY & FRIDAY LUNCHEON BINGO

Doors open: 8:30am  
Admission open: 9am  
Warm ups: 10am  
Main session: 11am

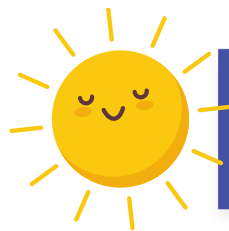
*Lunch served  
during intermission!*

### FRIDAY EVENING

Doors open: 5:30pm  
Admission open: 6pm  
Warm ups: 7pm  
Main session: 8pm

### SUNDAY MATINEE

Doors open: 3:30pm  
Admission open: 4pm  
Warm ups: 5pm  
Main session: 6pm



# MAY

2025



MON  
PM

TUES  
PM

WED  
AM

FRI  
AM/PM

SUN  
MATINEE

 <b>PLAY BINGO! EARN FREE PLAY!</b> Swipe your Rewards Club card at Bingo and earn points for Game Room Free Play!				
 <b>5</b>	 <b>6</b> QUEEN OF HEARTS MINI SESSIONS	 <b>7</b> FREE BINGO DABBER LUNCHEON BINGO	 <b>9</b> STARBURST BINGO LUNCHEON BINGO	 <b>11</b> SPECIAL GIFT FOR MOMS!
 <b>12</b> MONEY BALL BINGO	 <b>13</b> QUEEN OF HEARTS MINI SESSIONS Bounce back admission see back for details	 <b>14</b> 2ND CHANCE COVERALL LUNCHEON BINGO	 <b>16</b> DOUBLE FREE SPOT LUNCHEON BINGO	 <b>18</b> see back for details
 <b>19</b>	 <b>20</b> QUEEN OF HEARTS MINI SESSIONS	 <b>21</b> FREE BINGO DABBER LUNCHEON BINGO	 <b>23</b> STARBURST BINGO LUNCHEON BINGO	 <b>25</b>
 <b>26</b> MONEY BALL BINGO	 <b>27</b> QUEEN OF HEARTS MINI SESSIONS	 <b>28</b> 2ND CHANCE COVERALL LUNCHEON BINGO	 <b>30</b> DOUBLE FREE SPOT LUNCHEON BINGO	 <b>SEE JUNE CALENDAR!</b>



# BIG BINGO GAME

Sunday, May 18th

DOORS OPEN: 11AM | ADMISSION OPENS: 11:30AM  
WARM UP SET 1: 12:30PM | WARM UP SET 2: 1PM  
MAIN SESSION: 2PM

## ADMISSION

### PAPER - MAIN SESSION

6on Main Session - \$40

### ADD ONS

6 additional Cards

Main Session - \$15

Warm up: Set 1 Blue - \$7

Warm up: Set 2 Red - \$10

Specials: Green 6 cards - \$15

Quick Draws - 2/\$1

### COMPUTER

Computers - includes 24 cards - \$50

Additional loads - 12 cards - \$20

Electronic Warm-Up: Set 1 Blue - \$7

Electronic Warm-Up: Set 2 Red - \$10

Electronic Specials 6 cards - \$15

Electronic Quick Draws - 2/\$1

Advanced tickets on sale until  
5/17/25 at midnight or while  
supplies last. \$10 in Free Play w/  
advance purchase.

ONLY  
\$40 <sup>+fee</sup>



SCAN HERE!



## Bingo Royalty

Single winner on the 1st warmup will determine the Bingo King or Queen. They will choose a number and every time that ball is pulled from the machine the rest of the session, they will receive \$5 in Free Play, plus a CROWN!



### DOUBLE FREE SPOT

Main Session Computer Cards will have Double Free Spaces. Better chance at winning!



### FREE DABBER

With paid admission by 10:30am



### MONEY BALL BINGO

First three balls out on 1st Warm up will determine Money Balls for the Main Session and win \$50 in Free Play. (multiple winners split game prize & free play prize)



### QUICK DRAW FRENZY

Purchase a Super Computer at admission and receive 20 Quick Draws Free. Maximum 20 free.



### 2ND CHANCE COVERALL

\$100 in Free Play

(multiple winners split game prize & free play prize)



### STARBURST BINGO

Main Session Computer Cards will have starburst added. Bingo out on the Starburst, win the star prize from Game Sheet based on winning bingo board color.



Bring back a paid Bingo receipt from any session from May 5th - May 12th, and receive 1 blue 6on and 1 red 6on pack for the 6pm Mini Session on May 13th (\$15 value)