






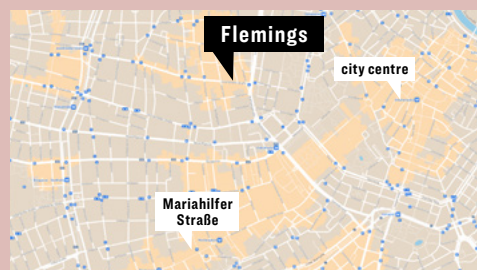
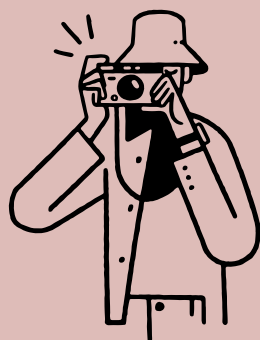
FLEMINGS HOTELS

Flemings Selection Hotel Wien-City
Josefstädter Straße 10-12
1080 Vienna

 **Contact**
 +43 1 20599-0
 Event sales: +43 1 22737-5016
 conference.vic@flemings-hotels.com
 www.flemings-hotels.com

 **Mobility**
 25 reserved parking spaces in the ASTORIA garage / 2 electric charging stations (both compatible with Tesla, 1 also for other electric cars)

 **Distances**
 Exhibition and congress centre 5.8 km / central train station 4.0 km / city centre 1.1 km / Mariahilfer Straße 1 km / Prater 3.9 km / Naschmarkt 1.5 km / Schönbrunn Palace 4.8 km / airport 20 km



ENJOY YOUR STAY IN VIENNA!

Rooms


195 rooms and 12 suites / extra comfortable box-spring bed / soundproofed windows / individually adjustable air-conditioning / mini fridge / free bottle of mineral water / coffee and tea station / free high-speed WiFi / laptop-size safe / flat-screen TV with radio / comfortable work corner with desk / glass and granite bathroom / high-quality Malin+Goetz skincare products / laundry service and ironing board in room / non-smoking rooms only / rooms with connecting door / rooms with balcony on 6th floor / rooms with bathtubs

Cuisine


Hearty, regional breakfast buffet / restaurant / bar / sunroom / patio


Fitness & wellness

Natural sauna / steam room / wellness showers / relaxation area / modern gym

 **Technical equipment**
 With modern Jabra-PanaCast video conferencing technology, you can host high-quality hybrid meetings (up to 10 people)

State-of-the-art conference technology such as ClickShare systems for easy presentation sharing / WiFi / projectors / screens / cameras and other technical equipment also provided

 **Service**
 Exclusive meetings concierge at your disposal for the duration of your stay / in-room dining if desired / greatly enhanced safety concept, the Flemings Feel Safe Promise

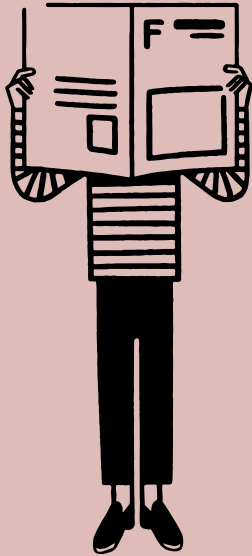
Function rooms	 Floor	 Height	 Surface area	 Natural light	 Classroom seating plan	 Theatre	 Banquet	 Reception	 U-shaped	 Conference style
Room 1	GF	3.30 m	30 m ²	yes	12 (-)*	20 (7)*	10	20	10 (-)*	12 (4)*
Room 2	GF	3.30 m	63 m ²	yes	25 (17)*	40 (15)*	30	40	18 (10)*	20 (12)*
Room 3	GF	3.30 m	62 m ²	yes	25 (17)*	40 (15)*	30	40	18 (10)*	20 (12)*
Room 4	GF	3.30 m	62 m ²	yes	25 (17)*	40 (15)*	30	40	18 (10)*	20 (12)*
Flemings Silver	GF	3.30 m	70 m ²	yes	-	-	-	-	-	24 (14)*
Flemings Gold	GF	3.30 m	70 m ²	yes	28 (18)*	46 (18)*	30	40	26 (12)*	14 (14)*
Room 1+2	GF	3.30 m	100 m ²	yes	52 (27)*	67 (25)*	40	110	27 (16)*	32 (16)*
Room 1+2+3	GF	3.30 m	160 m ²	yes	92 (42)*	116 (40)*	70	180	-	-
Room 1+2+3+4	GF	3.30 m	220 m ²	yes	140 (57)*	179 (55)*	110	250	-	-
Room 2+3	GF	3.30 m	125 m ²	yes	74 (34)*	102 (31)*	50	140	- (20)*	- (24)*
Room 2+3+4	GF	3.30 m	190 m ²	yes	124 (52)*	151 (47)*	90	215	-	-
Room 3+4	GF	3.30 m	125 m ²	yes	76 (34)*	95 (31)*	60	140	- (20)*	- (24)*

You can also book our **sunroom** or **patio** for special events.

*socially distanced seating plan

FLEMINGS

HOTELS



OUR FUNCTION ROOMS

