

Meetings & Events



Pre-Function



Winter Garden



Roof Terrace

With a seamless integration into the university experience, guests of The Study at University of Chicago will step onto campus the moment they exit the hotel.

Offering approximately 4,700 ft² of conference space, with a multitude of flexible event spaces, ideal for spirited talks, strategic planning sessions, recruiting, business meetings.

A light-filled Winter Garden is ideal for social occasions and celebrations. A 2,200 sq ft indoor/outdoor entertainment and event space featuring an arboretum-inspired mural by Dean Barger and elaborate light fixture by John Pomp Studios. An outdoor terrace with high grey brick walls and surrounding greenery provide privacy from the street.

All spaces are fully equipped with the latest in a/v technology and complimentary wi-fi.

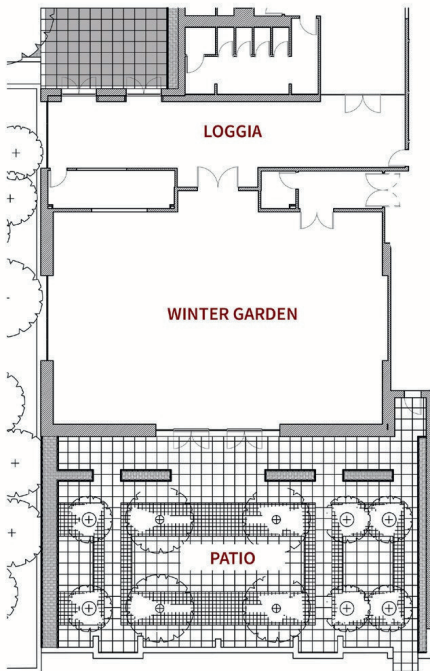
For more information, contact:

Tenasha Wilcoxon | Director, Sales & Marketing | twilcoxon@studyhotels.com | 773.643.1600

SEATING CAPACITY

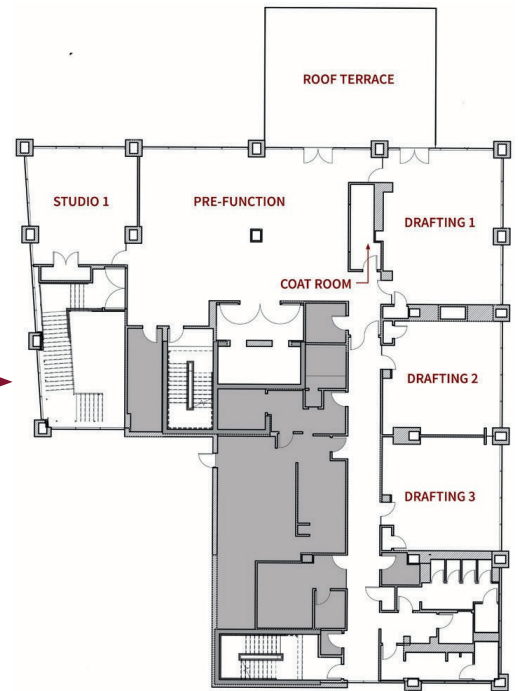
	Theater	Classroom	Banquet	Conference	U-Shape	Reception
Winter Garden	200	150	160	60	40	225
Terrace	-	-	-	-	-	150
Loggia	-	-	-	-	-	100
Studio 1	40	27	24	18	15	40
Pre-Function	-	-	80	-	-	100
Drafting Room 1	50	40	44	30	24	55
Drafting Room 2	45	30	36	20	18	40
Drafting Room 3	40	30	36	20	18	40
Roof Terrace	50	-	40	-	-	50

Meetings & Events



FIRST FLOOR
Winter Garden and Loggia based on per person minimum

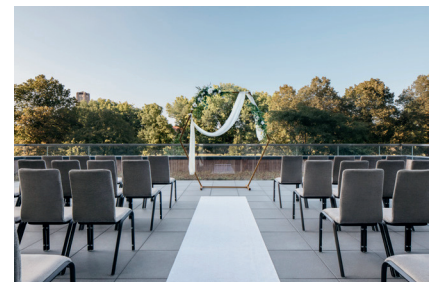
SECOND FLOOR
Drafting Rooms and Studio 1 available for full and half day rentals Roof Terrace based on per person minimum



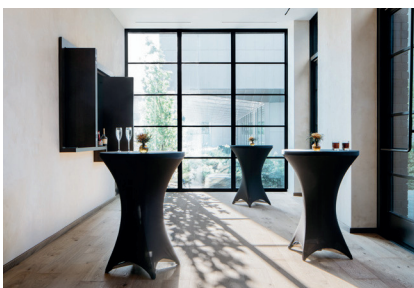
Winter Garden



Studio 1



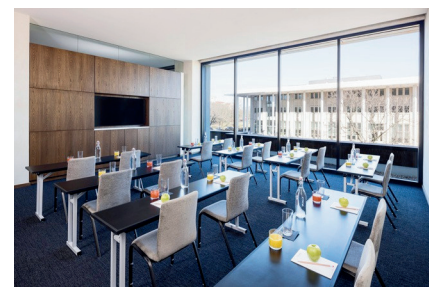
Roof Terrace



Loggia



Drafting 1



Drafting 2 / Drafting 3