



# PARADOX

— HOTEL VANCOUVER —

*Here is a stunningly  
designed home base  
for the creative class.*

147 luxury hotel rooms, exquisitely designed meeting and event spaces and award-winning restaurant and stylish lounges draw on the vibrant spirit of their locale to provide a perfect playground for the curious souls and adventurous travelers to connect and explore their creative impulses, delivering a uniquely rich way for the new generation to – not just stay – but live in tandem with the rhythm of the city.

**PARADOX**  
— HOTEL VANCOUVER —



# MEETING & EVENT

*Our Spaces*

Supporting Paradox Hotel Vancouver's function as a social hub are the Grand Ballroom and English Bay Room. With a wraparound outdoor terrace, these spaces are as lively as the unique crowd who fills them. Exquisitely lined with leather and Eucalyptus wood while powered by state-of-the-art audio-visual equipment, it sets up to 500 guests for Grand Ballroom and 200 guests for English Bay Room. Yaletown and Coal Harbour Rooms are perfect fit for smaller group social gatherings or business meetings.

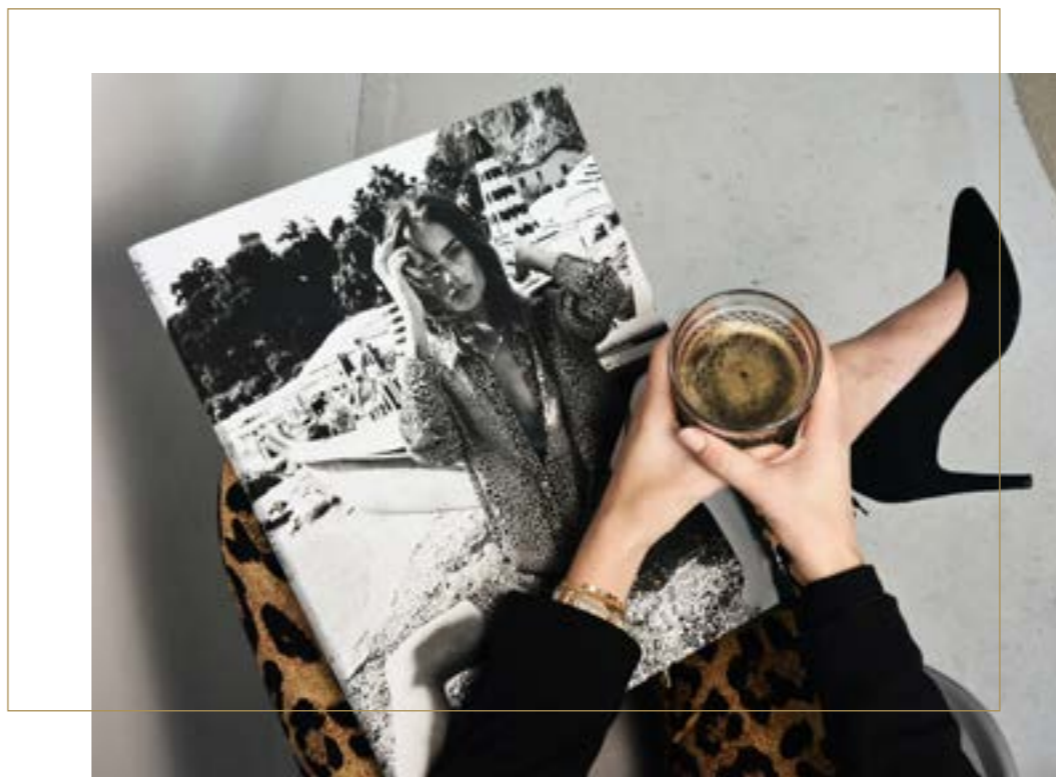
## NUMBERS

- Total function space: 15,500 sq ft (1,440 sq m)
- Number of function spaces: 7
- Size of largest function space: 5,360 sq ft (498 sq m)
- Maximum capacity: 800
- 3,982 sq ft (370 sq m) outdoor wrap-around terrace
- All meeting spaces offer natural daylight

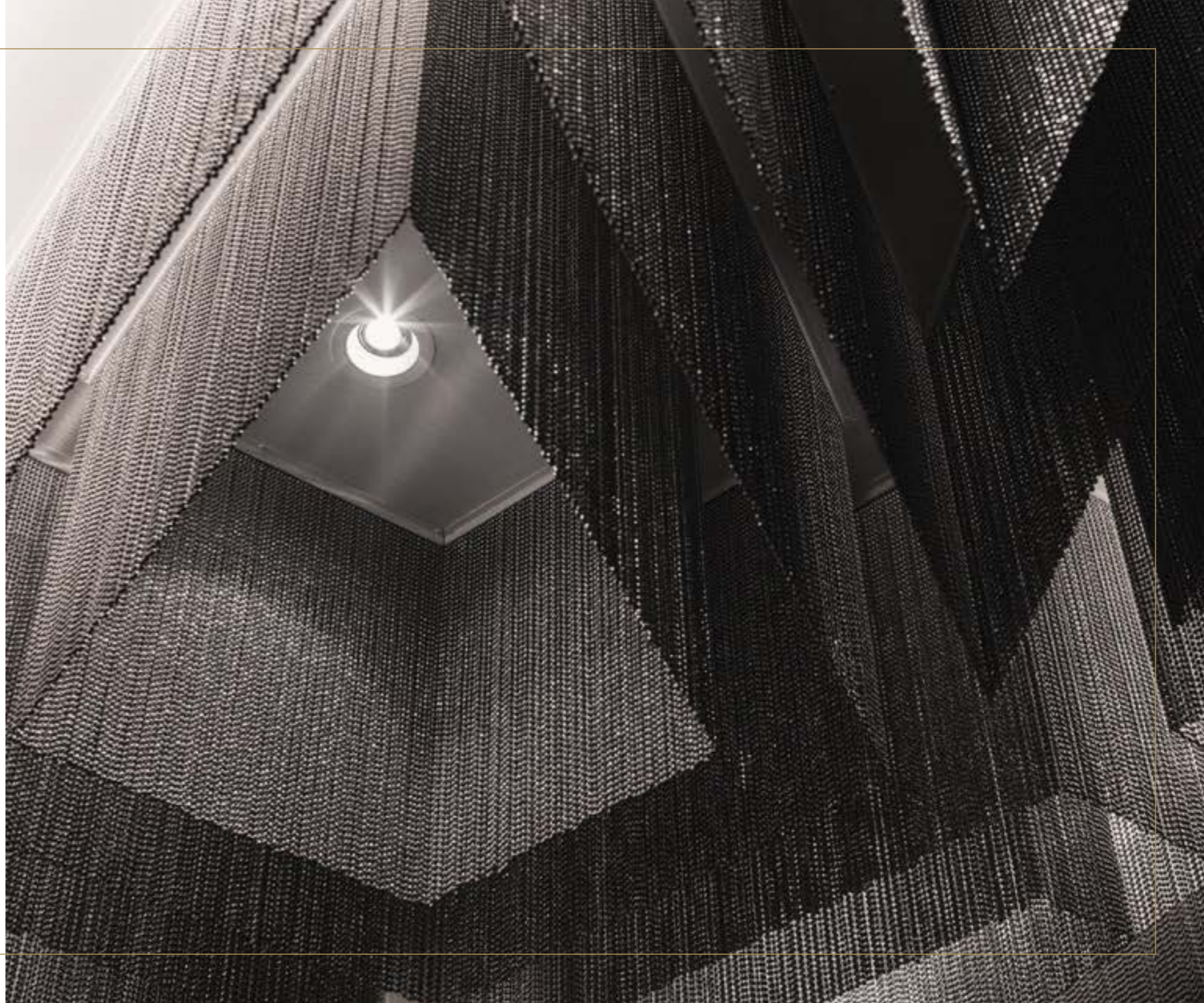
For more information, please contact the Catering team at:

✉ [jui.kang@paradoxhotels.com](mailto:jui.kang@paradoxhotels.com)

☎ +1 236 900 6001



*Centre*  
**FOYER**



*Grand*  
**BALLROOM**



*Grand*  
**BALLROOM**



*English Bay*  
**ROOM**





*English Bay*  
**ROOM**





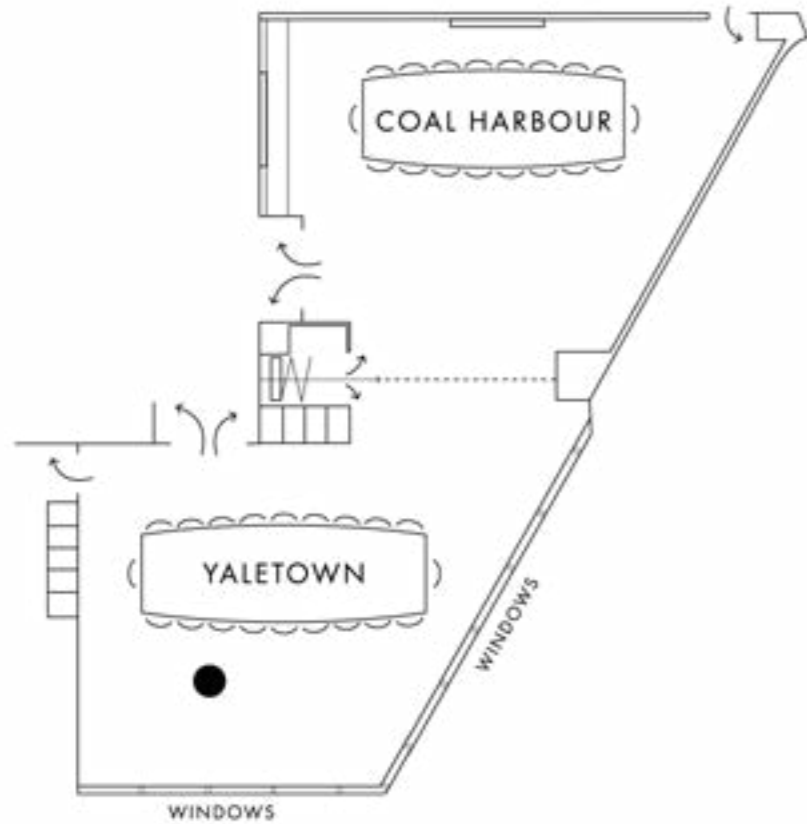
*Yaletown*  
**ROOM**



*Yaletown*  
**ROOM**

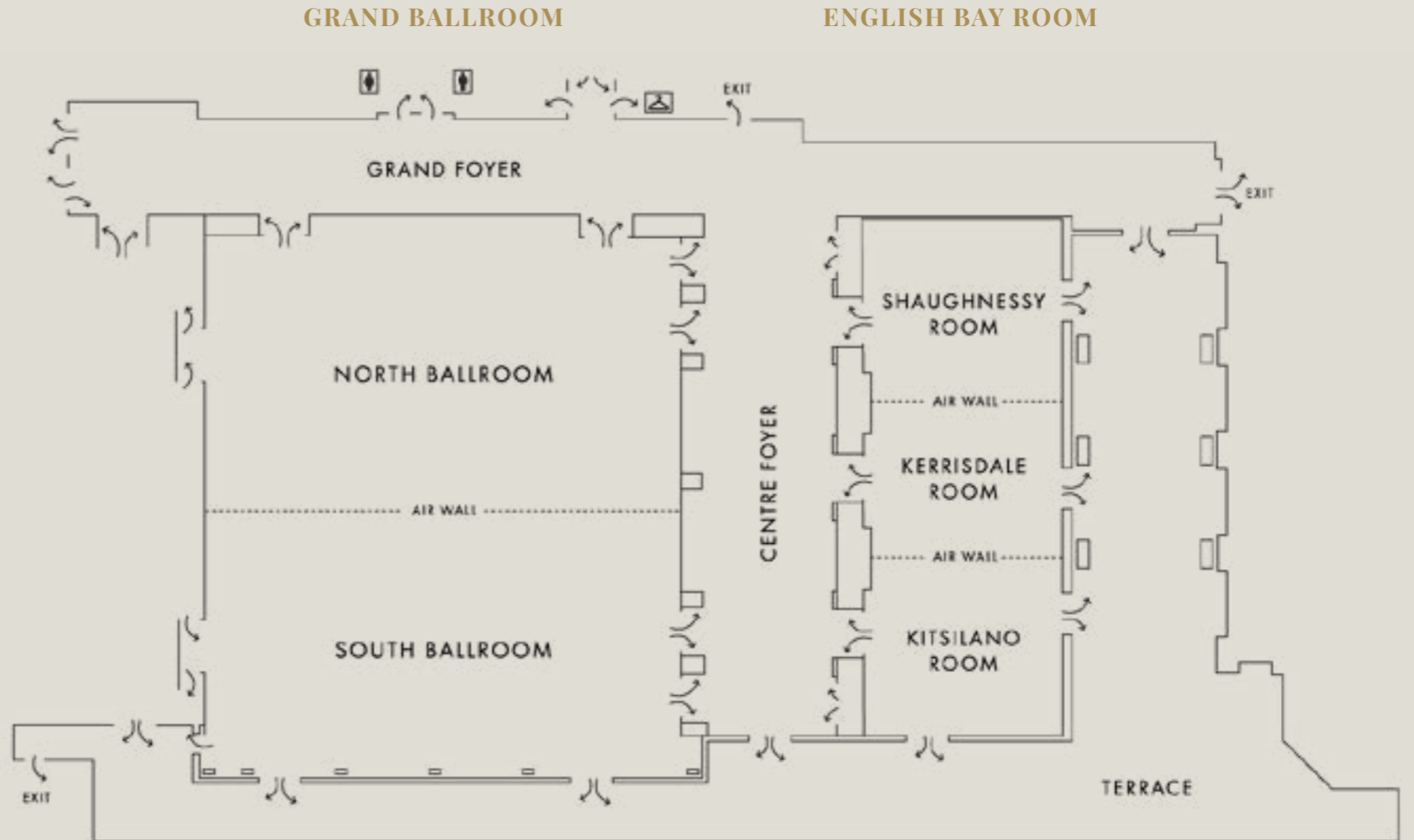


*2nd*  
**FLOOR**



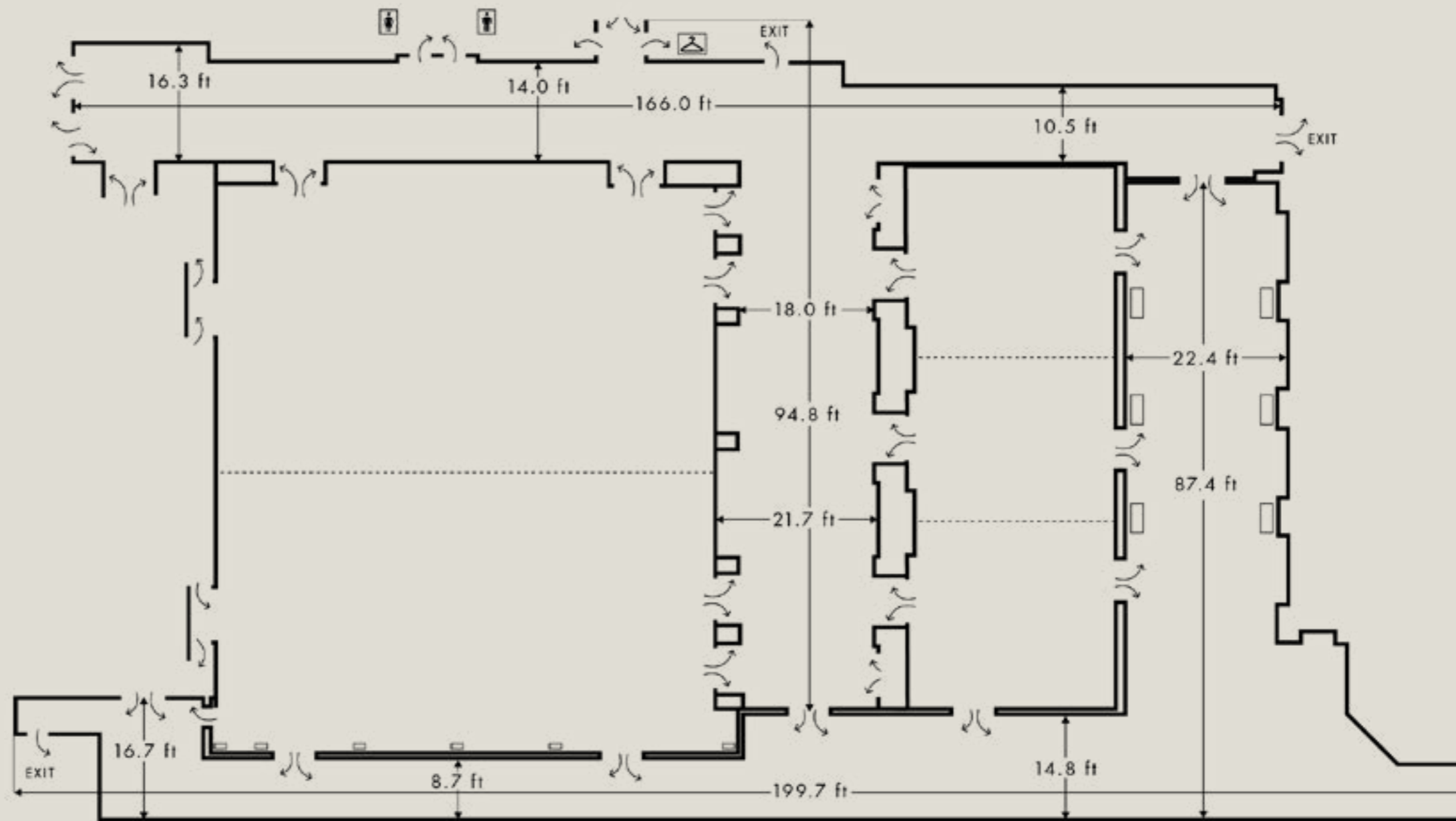
WEST GEORGIA STREET

*3rd*  
**FLOOR**



WEST GEORGIA STREET

3rd  
**FLOOR**  
*Measurements*



# Capacity CHARTS

ROOMS	TOTAL SQ FT	LENGTH X WIDTH	CEILING	RECEPTION	BANQUET	CRESCENT (ROUND OF 6/8)	THEATRE	CLASSROOM	U-SHAPE (3 PER 6')	HOLLOW SQUARE (3 PER 6')	BOARDROOM
<b>THIRD FLOOR</b>											
GRAND BALLROOM	5,360	80' x 67'	17'	500	360	240 / 320	500	270	-	-	-
• SOUTH BALLROOM	2,680	40' x 67'	17'	250	180	120 / 160	240	130	60	66	-
• NORTH BALLROOM	2,680	40' x 67'	17'	250	180	120 / 160	240	130	60	66	-
ENGLISH BAY ROOM	2,072	74' x 28'	11'	200	140	84 / 112	200	120	63	72	-
• KITSILANO ROOM	672	24' x 28'	11'	50	40	24 / 32	48	36	24	30	20
• KERRISDALE ROOM	672	24' x 28'	11'	50	40	24 / 32	48	36	24	30	20
• SHAUGHNESSY ROOM	672	24' x 28'	11'	50	40	24 / 32	48	36	24	30	20
• KITSILANO & KERRISDALE ROOM	1,344	48' x 28'	11'	120	80	48 / 64	96	72	48	54	40
• KERRISDALE & SHAUGHNESSY ROOM	1,344	48' x 28'	11'	120	80	48 / 64	96	72	48	54	40
<b>FOYERS</b>											
• CENTRE FOYER	1,530	90' x 17'	-	-	-	-	-	-	-	-	-
• GRAND FOYER	1,560	120' x 13'	-	-	-	-	-	-	-	-	-
WRAP-AROUND TERRACE	3,982	-	-	-	-	-	-	-	-	-	-
<b>SECOND FLOOR</b>											
YALETOWN & COAL HARBOUR ROOM	1,191	-	9'	100	70	42 / 56	-	-	-	-	-
YALETOWN ROOM	616	22' x 28'	9'	50	30	18 / 24	48	27	21	24	18
COAL HARBOUR ROOM	575	23' x 25'	9'	50	30	18 / 24	54	36	21	24	20

## *Directions &* **PARKING**

We recommend that all our guests arrive at the hotel via the laneway to the rear of the tower which is accessible via Thurlow Street or Bute Street (between West Georgia Street and Melville Street).

The postal address for the Hotel is 1161 West Georgia Street, Vancouver, however due to limited paid parking restrictions, it is difficult to park on West Georgia Street. We recommend that you utilize our valet service for your convenience.



### **VALET PARKING**

For parking options our doorman will be delighted to assist your guests with valet parking upon arrival. The charge for day parking for attending an event is \$28.00 CAD plus tax up to 4 hours or \$55.00 CAD plus tax if the vehicle remains overnight. Kindly note that in-and-out privileges are being offered for overnight guests only.

### **PUBLIC SELF-PARKING**

Public self-parking is available at the Fortis BC building adjacent to the hotel again via the laneway to the rear.

Please be advised that this car park is open from 5:30AM – 10:30PM on weekdays and 7:00AM – 7:00PM on weekends and holidays. There is an elevator directly connecting from the public self-parking to the Hotel.

### **RATES**

30 MINUTES: \$4 per car inclusive of taxes  
1 HOUR: \$8 per car inclusive of taxes  
DAILY RATE: \$21 per car inclusive of taxes  
Daily rate applies after  
3 hours and it ends at 12:00AM

### **PAYMENT METHOD**

Visa, MasterCard and Interac Direct Debit