

# EASTIN GRAND HOTEL PHAYATHAI

---

## Meeting Package

*Service and Value Redefined*



+662 483 2899



cmgr1@eastingrandphayathai.com



18 Phaya Thai Rd, Thung Phaya Thai,  
Ratchathewi, Bangkok 10400



**EASTIN**  
GRAND HOTEL  
PHAYATHAI

# The Auditorium & Chef Lab

## Facilities and Price List

### ROOM RENTAL (COFFEE & TEA)

- Full-day room rental - Baht 50,000 net
  - Welcome refreshments with coffee and tea selection
  - Meeting room usage from 08:00-17:00 hrs.
- Half day room rental - Baht 30,000 net
  - Welcome refreshments with coffee and tea selection
  - Meeting room usage from 08:00-12:00 hrs. or 13:00-17:00 hrs.

### FULL-DAY MEETING - STARTING FROM THB 2,000 NET/ PERSON (2 COFFEE BREAKS + LUNCH)

- Meeting room usage from 08:00-17:00 hrs.
- Welcome refreshments with coffee and tea selection
- Morning and afternoon break with a choice of coffee break items including an assorted fresh fruit, and herbal drinks
- Join the International Buffet at The Market@5 restaurant (opens on Monday-Saturday)  
Additional Charge Baht 300 net per person will be charged for
  - Private International Buffet (min. 50 guests)
  - Thai or Western set lunch in a private function room (min. 20 guests)

### HALF-DAY MEETING - STARTING FROM THB 1,800 NET/ PERSON (1 COFFEE BREAK + LUNCH)

- Meeting room usage from 08:00-12:00 hrs. or 13:00-17:00 hrs.
- Welcome refreshments with coffee and tea selection
- Morning and afternoon break with a choice of coffee break items including an assorted fresh fruit, and herbal drinks
- Join the International Buffet at The Market@5 restaurant (opens on Monday-Saturday)  
Additional Charge Baht 300 net per person will be charged for
  - Private International Buffet (min. 50 guests)
  - Thai or Western set lunch in a private function room (min. 20 guests)

### COFFEE BREAK - STARTING FROM THB 1,200 NET/ PERSON (1 COFFEE BREAK)

- Meeting room usage from 08:00-12:00 hrs. or 13:00-17:00 hrs.
- Welcome refreshments with coffee and tea selection
- Morning and afternoon break with a choice of coffee break items including an assorted fresh fruit, and herbal drinks

### ALL PACKAGES ARE INCLUSIVE OF:

#### Materials:

- Registration table
- Meeting room set up
- Flipcharts and markers
- Notepads and pencils
- Drinking water
- Digital signage

#### Audio Visual:

- 1 LCD projector
- Motorized screen
- Standard audio-visual equipment
- Wi-Fi internet access

\* All prices are based on a minimum of 30 guests and are inclusive of 10% service charge & applicable government tax.





# Function Rooms (3<sup>rd</sup> Floor)

Function Room	m2	Theatre
The Auditorium	205	98
Chef Lab	134	12





# Meeting Rooms (3<sup>rd</sup> Floor)





# Facilities and Price List

## **FULL-DAY MEETING - STARTING FROM THB 2,000 NET/ PERSON (2 COFFEE BREAKS + LUNCH)**

- Meeting room usage from 08:00-17:00 hrs.
- Free-flow coffee and tea selection throughout the event
- Morning and afternoon break with a choice of coffee break items including assorted fresh fruit, and herbal drinks
- Join the International Buffet at The Market@5 restaurant (opens on Monday-Saturday)  
Additional Charge Baht 300 net per person will be charged for
  - Private International Buffet (min. 50 guests)
  - Thai or Western set lunch in a private function room (min. 20 guests)

## **HALF-DAY MEETING - STARTING FROM THB 1,800 NET/ PERSON (1 COFFEE BREAK + LUNCH)**

- Meeting room usage from 08:00-12:00 hrs. or 13:00-17:00 hrs.
- Free-flow coffee and tea selection throughout the event
- Morning or afternoon break with a choice of coffee break items including assorted fresh fruit, and herbal drinks
- Join the International Buffet at The Market@5 restaurant (opens on Monday-Saturday)  
Additional Charge Baht 300 net per person will be charged for
  - Private International Buffet (min. 50 guests)
  - Thai or Western set lunch in a private function room (min. 20 guests)

## **COFFEE BREAK - STARTING FROM THB 1,200 NET/ PERSON (1 COFFEE BREAK)**

- Meeting room usage from 08:00-12:00 hrs. or 13:00-17:00 hrs.
- Free-flow coffee and tea selection throughout the event
- Morning or afternoon break with a choice of coffee break items including assorted fresh fruit, and herbal drinks
- Room rental fee is applicable, subject to room capacity and number of participants

## **ALL PACKAGES ARE INCLUSIVE OF:**

### **Materials:**

- Registration table
- Meeting room set up
- Flipcharts and markers
- Notepads and pencils
- Drinking water and candies
- Backdrop lettering & digital signage

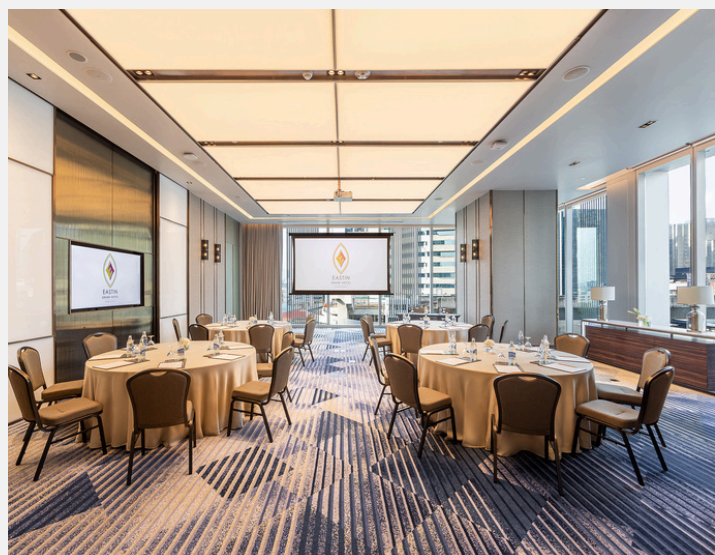
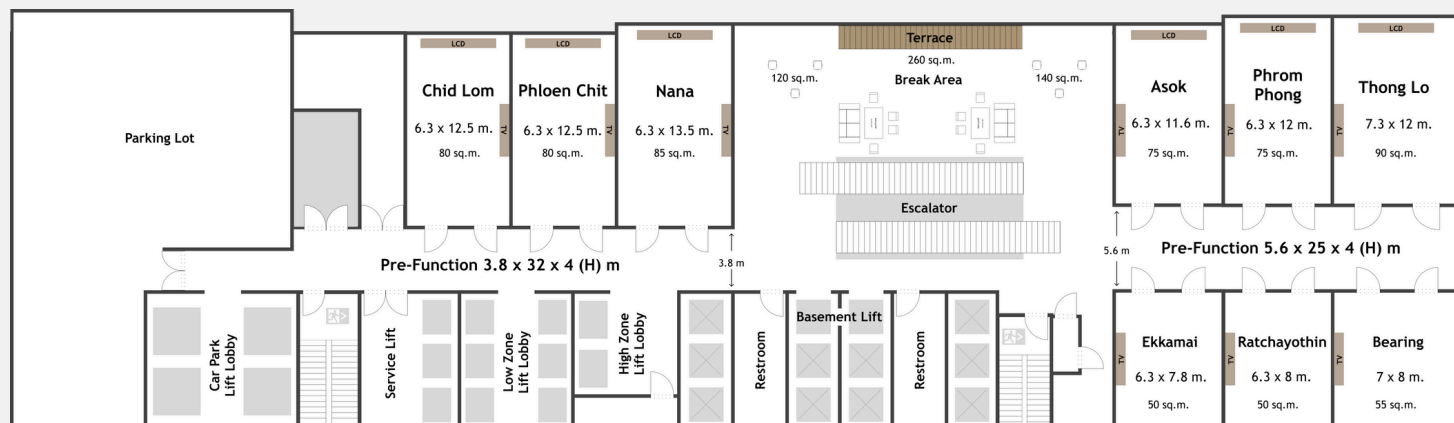
### **Audio Visual:**

- 1 LCD projector
- Motorized screen
- Standard audio-visual equipment
- Wi-Fi internet access



# Function Rooms (4<sup>th</sup> Floor)

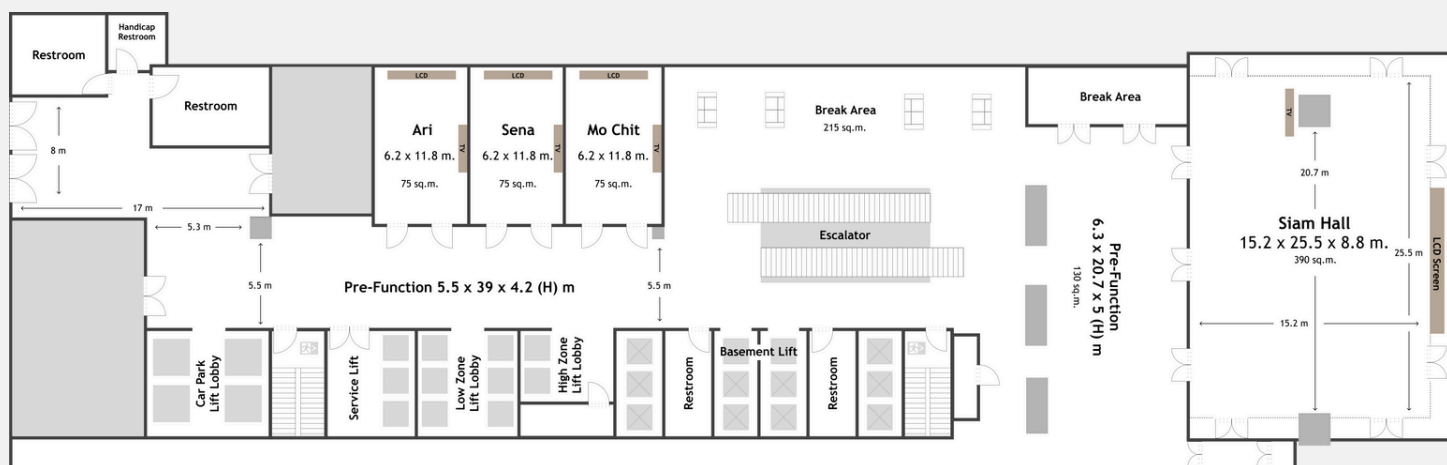
Function Room	m2	W	L	H	Classroom	Theatre	I	U	Hollow	Banquet	Reception
		(meters)					Shape				
Chid Lom	80	6.3	12.5	3.8	42	54	24	27	42	50	60
Phloen Chit	80	6.3	12.5	3.8	42	54	24	27	42	50	60
Nana	85	6.3	12.5	3.8	45	63	24	27	42	50	80
Pre-Function	120	3.8	32.0	4.0	-	-	-	-	-	-	-
Ekkamai	50	6.3	7.8	3.8	-	-	12	-	-	-	-
Ratchayothin	50	6.3	8.0	3.8	-	-	12	-	-	-	-
Bearing	55	7.0	8.0	3.8	-	-	-	-	12	-	-
Asok	75	6.3	12.0	3.8	36	54	24	27	42	50	60
Phrom Phong	75	6.3	11.6	3.8	36	54	24	27	42	50	60
Thong Lo	90	7.3	12.0	3.8	42	54	24	27	42	60	90
Pre-Function	140	5.6	25.0	4.0	-	-	-	-	-	-	-





# Function Room (6<sup>th</sup> Floor)

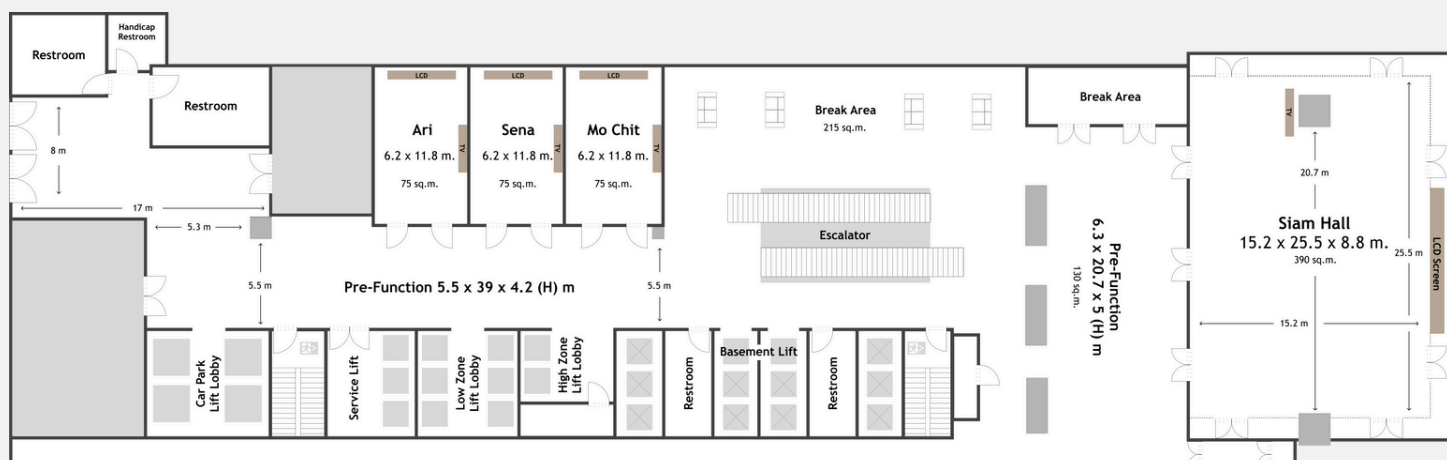
Function Room	m2	W	L	H	Classroom	Theatre	I	U	Hollow	Banquet	Reception
		(meters)					Shape				
Siam Hall	390	15.2	25.5	8.8	135	210	36	51	84	180	250
Pre-Function	130	6.3	20.7	5.0	-	-	-	-	-	-	-





# Function Room (6<sup>th</sup> Floor)

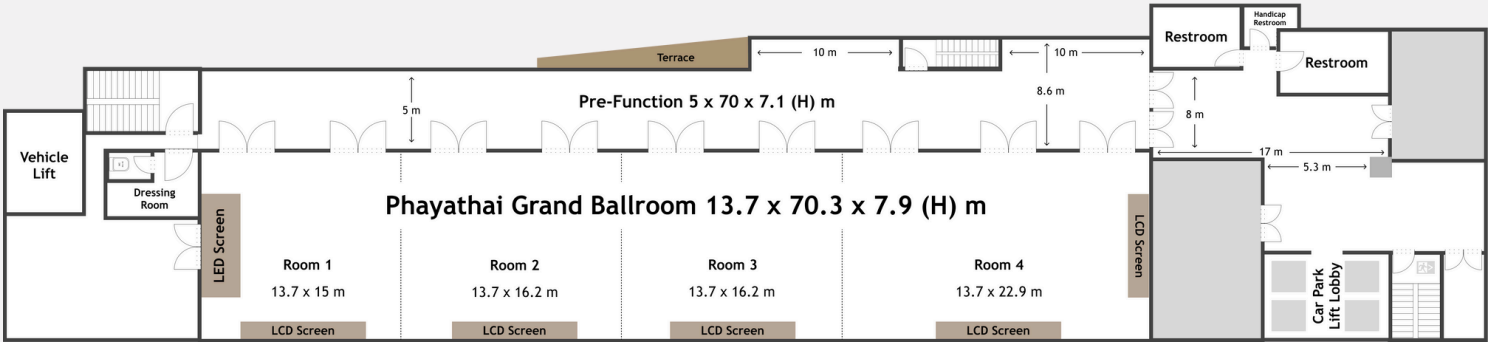
Function Room	m2	W	L	H	Theatre	Banquet	Reception
		(meters)					
Ari	75	6.2	11.8	4.2	54	50	60
Sena	75	6.2	11.8	4.2	54	50	60
Mo Chit	75	6.2	11.8	4.2	54	50	60
Pre-Function	215	5.5	39.0	4.2	-	-	-





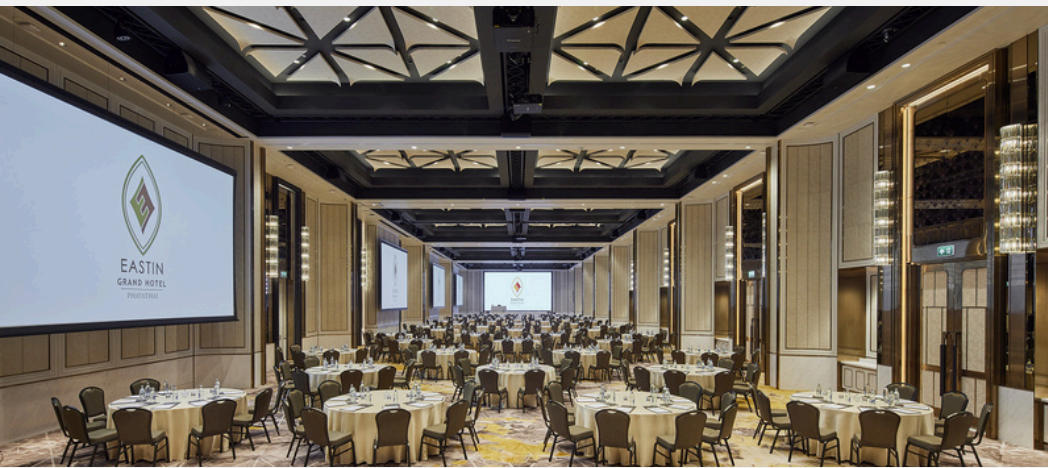
# Phayathai Grand Ballroom (6<sup>th</sup> Floor)

Function Room	m2	W	L	H	Classroom	Theatre	I	U	Hollow	Banquet	Reception
		(meters)					Shape				
Phayathai Grand Ballroom	960	13.7	70.3	7.9	648	1,020	-	-	-	800	1,000
Phayathai 1	205	13.7	15	7.9	90	120	24	48	72	80	130
Phayathai 2	221	13.7	16.2	7.9	72	120	-	60	66	70	140
Phayathai 3	221	13.7	16.2	7.9	72	120	-	60	66	70	140
Phayathai 4	313	13.7	22.9	7.9	180	220	66	72	90	200	240
Phayathai 1-2	427	13.7	31.2	7.9	288	340	90	102	96	320	270
Phayathai 1-3	649	13.7	47.4	7.9	468	600	144	156	150	520	420
Phayathai 2-4	443	13.7	32.4	7.9	486	760	-	186	168	640	240
Phayathai 3-4	535	13.7	39.1	7.9	306	500	96	132	120	400	360
Pre-Function	350	5	70	7.1	-	-	-	-	-	-	-





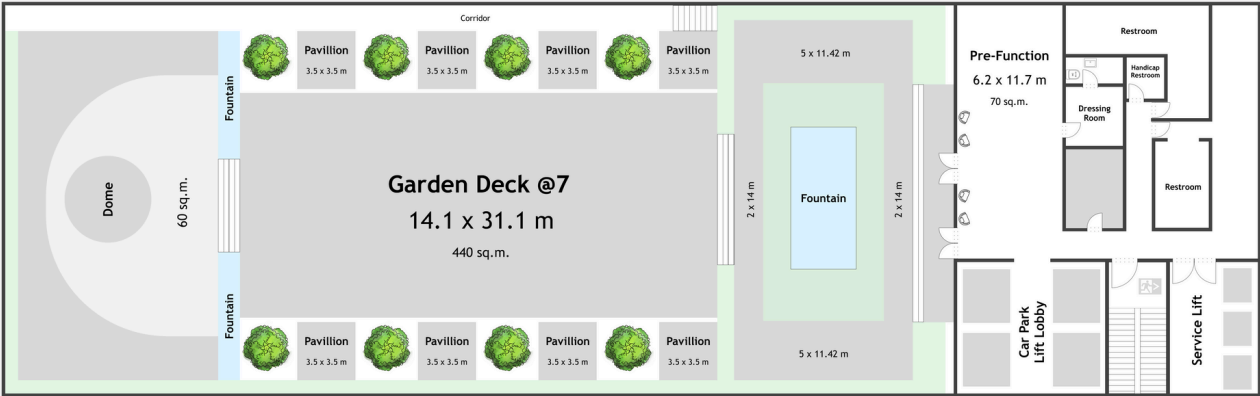
# Phayathai Grand Ballroom (6<sup>th</sup> Floor)





# Garden Deck (7<sup>th</sup> Floor)

Function Room	m2	W	L	H	Theatre	Banquet	Reception
		(meters)					
Garden Deck	440	14.1	31.1	-	300	270	300
Pre-Function	75	11.7	6.2	4.5	50	-	-



# Facilities and Price List

## **FULL-DAY MEETING - STARTING FROM THB 2,000 NET/ PERSON (2 COFFEE BREAKS + LUNCH)**

- Meeting room usage from 08:00-17:00 hrs.
- Free-flow coffee and tea selection throughout the event
- Morning and afternoon break with a choice of coffee break items including assorted fresh fruit, and herbal drinks
- Join the International Buffet at The Market@5 restaurant (opens on Monday-Saturday)  
Additional Charge Baht 300 net per person will be charged for
  - Private International Buffet (min. 50 guests)
  - Thai or Western set lunch in a private function room (min. 20 guests)

## **HALF-DAY MEETING - STARTING FROM THB 1,800 NET/ PERSON (1 COFFEE BREAK + LUNCH)**

- Meeting room usage from 08:00-12:00 hrs. or 13:00-17:00 hrs.
- Free-flow coffee and tea selection throughout the event
- Morning or afternoon break with a choice of coffee break items including assorted fresh fruit, and herbal drinks
- Join the International Buffet at The Market@5 restaurant (opens on Monday-Saturday)  
Additional Charge Baht 300 net per person will be charged for
  - Private International Buffet (min. 50 guests)
  - Thai or Western set lunch in a private function room (min. 20 guests)

## **COFFEE BREAK - STARTING FROM THB 1,200 NET/ PERSON (1 COFFEE BREAK)**

- Meeting room usage from 08:00-12:00 hrs. or 13:00-17:00 hrs.
- Free-flow coffee and tea selection throughout the event
- Morning or afternoon break with a choice of coffee break items including assorted fresh fruit, and herbal drinks
- Room rental fee is applicable, subject to room capacity and number of participants

## **ALL PACKAGES ARE INCLUSIVE OF:**

### **Materials:**

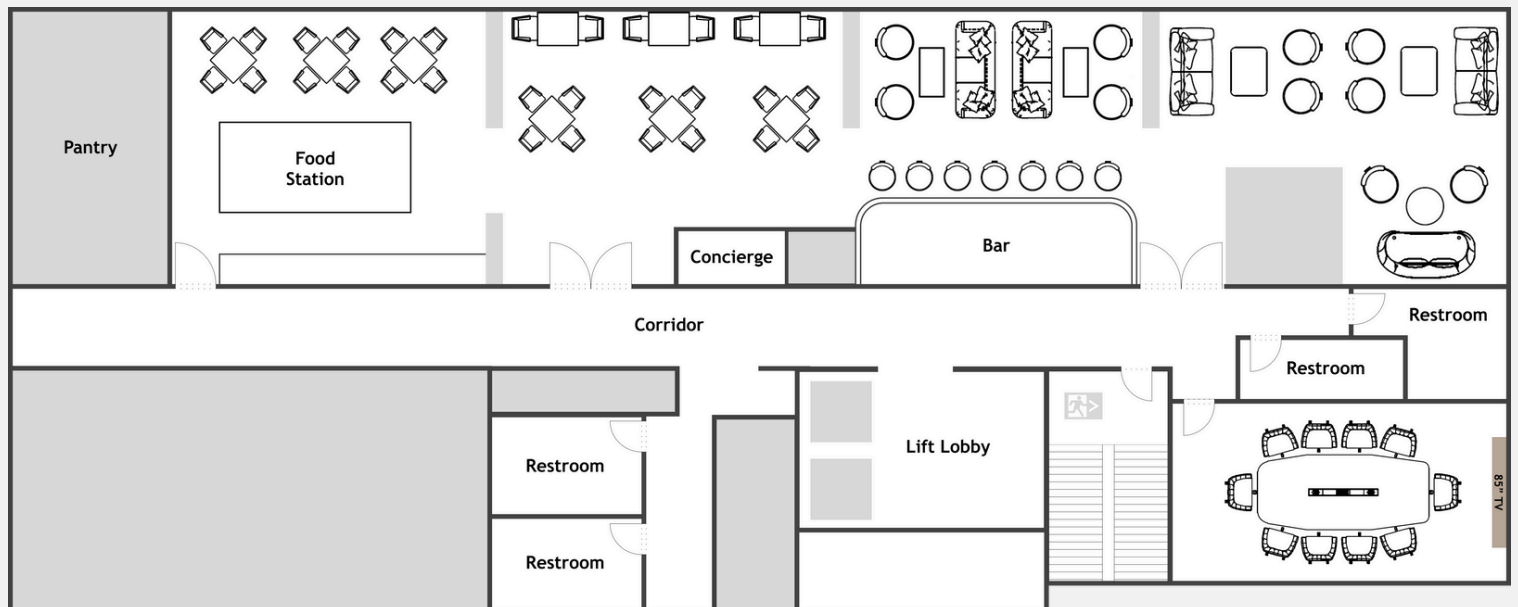
- Registration table
- Meeting room set up
- Flipcharts and markers
- Notepads and pencils
- Drinking water and candies
- Backdrop lettering & digital signage

### **Audio Visual:**

- 1 LCD projector
- Motorized screen
- Standard audio-visual equipment
- Wi-Fi internet access



# Sky Lounge at 38 (38<sup>th</sup> Floor)







## THE MARKET @5

The Market@5 draws inspiration from vibrant street food-style food trucks, offering a diverse selection of international cuisine. The menu highlights classic Thai, Asian, and European dishes, including Italian favorites, all served in a spacious restaurant spanning over 1,000 sqm, adorned with beautiful wall paintings.

Throughout the day, market-style live stations prepare fresh, high-quality dishes, ensuring a delightful and interactive dining experience. This is complemented by a unique Airstream beverage station, adding a touch of charm to the lively atmosphere.

### Opening hours:

- Breakfast: 06:00 - 11:30 hrs. (Please note that the buffet line closes at 11:00 hrs., but guests are welcome to remain seated until 11:30 hrs.)
- International Lunch Buffet (Mon-Sat): 12:00 - 14:30 hrs.
- Splendid Sunday Brunch (every 1st and 4th Sun): 12:00 - 16:00 hrs.
- Grand Dinner Buffet (Sat): 18:00 - 22:00 hrs.





## TRATTORIA 22

In a perfect setting beside the pool up on the 22nd floor, discover Mediterranean cuisine with a modern twist at Trattoria@22. Showcasing seasonal dishes with a menu guided by exceptional ingredients and the finest produce, enjoy the best of the Mediterranean in a stylish setting with an inviting atmosphere.

**Opening hours:** 12:00 - 23:30 hrs. (Last order 22:30 hrs.)

# Contact



## Eastin Grand Hotel Phayathai

18 Phaya Thai Road, Thung Phaya Thai,  
Kwang Ratchathewi, Khet Ratchathewi,  
Bangkok 10400

Tel: +662 483 2899 Ext. 7315

Fax: +662 483 2886

For more information, please contact team at  
[cmgr1@eastingrandphayathai.com](mailto:cmgr1@eastingrandphayathai.com)  
[www.eastingrandphayathai.com](http://www.eastingrandphayathai.com)



Google Map