



## FLEMINGS HOTEL WIEN-STADTHALLE

Neubaugürtel 26-28  
1070 Vienna



### Contact

+43 1 227 37-0

Event sales: +43 1 227 37-5016

conference.vie@flemings-hotels.com

www.flemings-hotels.com



### Mobility

14 parking spaces, price per day: €28 / 2 electric charging stations (Tesla-compatible) / opposite Vienna West station



### Distances

Wien Westbahnhof 0.5 km / Mariahilfer Strasse 0.5 km / Wiener Stadthalle 0.5 km / Naschmarkt 1.9 km / city center 2.3 km / Schönbrunn Palace 2.6 km / central train station 4.2 km / Prater 5.5 km / Exhibition and Congress Center 7.5 km / Vienna Airport (VIE) 19 km



Map data ©2022  
GeoBasis-DE/BKG (©2009), Google

# ENJOY YOUR STAY IN VIBRANT VIENNA!

### Rooms

168 rooms and 5 suites / extra-comfortable box-spring bed / soundproofed windows / individually adjustable air-conditioning / free high-speed WiFi / laptop-sized safe / one free bottle of mineral water / flat-screen TV with radio / comfortable work corner / glass and granite bathroom / high-quality Malin+Goetz skincare products / tea and coffee station / non-smoking rooms only / quick and easy self-check-in, no check-out necessary

### Cuisine

Generous regional breakfast buffet / restaurant / bar / international and regional specialties

### Fitness & wellness

Sauna / natural sauna / relaxation area / gym



### Technical equipment

Modern Jabra PanaCast video conferencing technology for holding high-quality hybrid meetings (up to 10 people)

State-of-the-art conference technology, such as ClickShare systems for easy presentation sharing / WiFi / projectors / screens / cameras and other technical equipment also provided













### Service

Exclusive meeting concierge available for the duration of your stay / optional in-room dining / enhanced hygiene concept, the Flemings' Feel Safe Promise

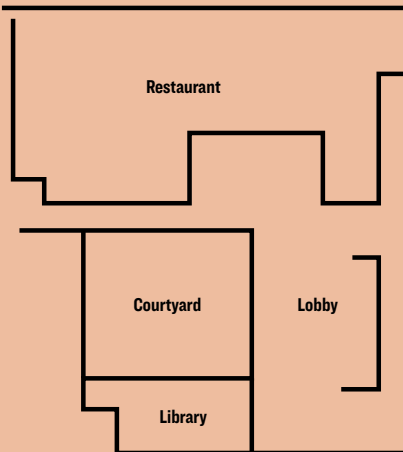
**FLEMINGS**  
HOTELS



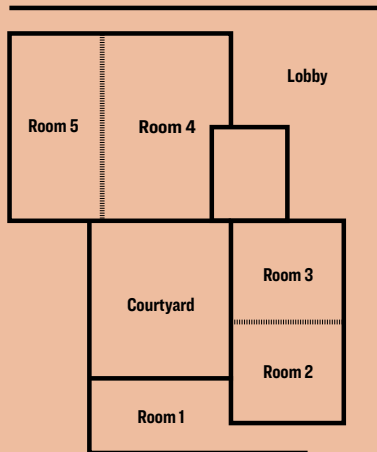
# FUNCTION ROOMS

	 Floor	 Height	 Surface area	 Natural light	 Classroom	 Theater	 Banquet	 Reception	 U-shaped	 Conference style
<b>Library</b>	GF	3.50 m	64,3 m <sup>2</sup>	yes	–	–	–	–	–	20
<b>Room 1</b>	B1	3.20 m	57,3 m <sup>2</sup>	yes	20	46	20	60	20	20
<b>Room 2</b>	B1	3.20 m	63,2 m <sup>2</sup>	yes	20	51	40	50	19	20
<b>Room 3</b>	B1	3.20 m	57,2 m <sup>2</sup>	yes	20	42	30	50	19	16
<b>Room 4</b>	B1	3.20 m	135,3 m <sup>2</sup>	yes	73	125	70	130	28	32
<b>Room 5</b>	B1	3.20 m	94,3 m <sup>2</sup>	no	53	93	40	90	31	32
<b>Room 6</b>	B2	3.20 m	57,3 m <sup>2</sup>	yes	20	46	20	60	20	20
<b>Room 7</b>	B2	3.20 m	63,2 m <sup>2</sup>	yes	20	51	40	50	19	20
<b>Room 8</b>	B2	3.20 m	59,2 m <sup>2</sup>	yes	20	43	30	50	19	16
<b>Room 9</b>	B2	3.20 m	135,5 m <sup>2</sup>	yes	73	125	70	130	28	32
<b>Room 10</b>	B2	3.20 m	96,2 m <sup>2</sup>	no	53	95	50	90	31	32
<b>Room 2+3</b>	B1	3.20 m	120,3 m <sup>2</sup>	yes	65	105	70	110	30	36
<b>Room 4+5</b>	B1	3.20 m	229,8 m <sup>2</sup>	yes	150	218	130	220	42	64
<b>Room 7+8</b>	B2	3.20 m	122,3 m <sup>2</sup>	yes	65	105	70	110	30	36
<b>Room 9+10</b>	B2	3.20 m	231,7 m <sup>2</sup>	yes	150	218	130	220	42	64

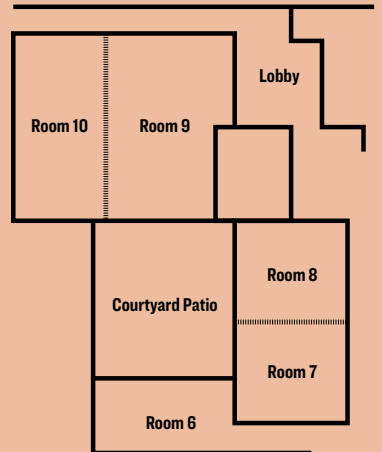
GROUND FLOOR



FIRST BASEMENT



SECOND BASEMENT



**BOOK NOW!**

