

  
**ANAHOTELS®**

Your emotion, our passion!

  
**Athénée Palace Hilton**  
Bucharest

  
**CROWNE PLAZA**  
ANIHG HOTEL  
BUCHAREST

  
**ANAHOTELS**  
**EUROPA**  
Eforie Nord

  
**ANAHOTELS**  
**SPORT**  
Poiana Braşov

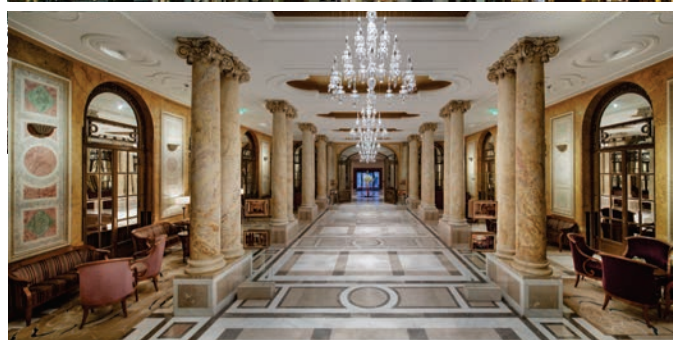
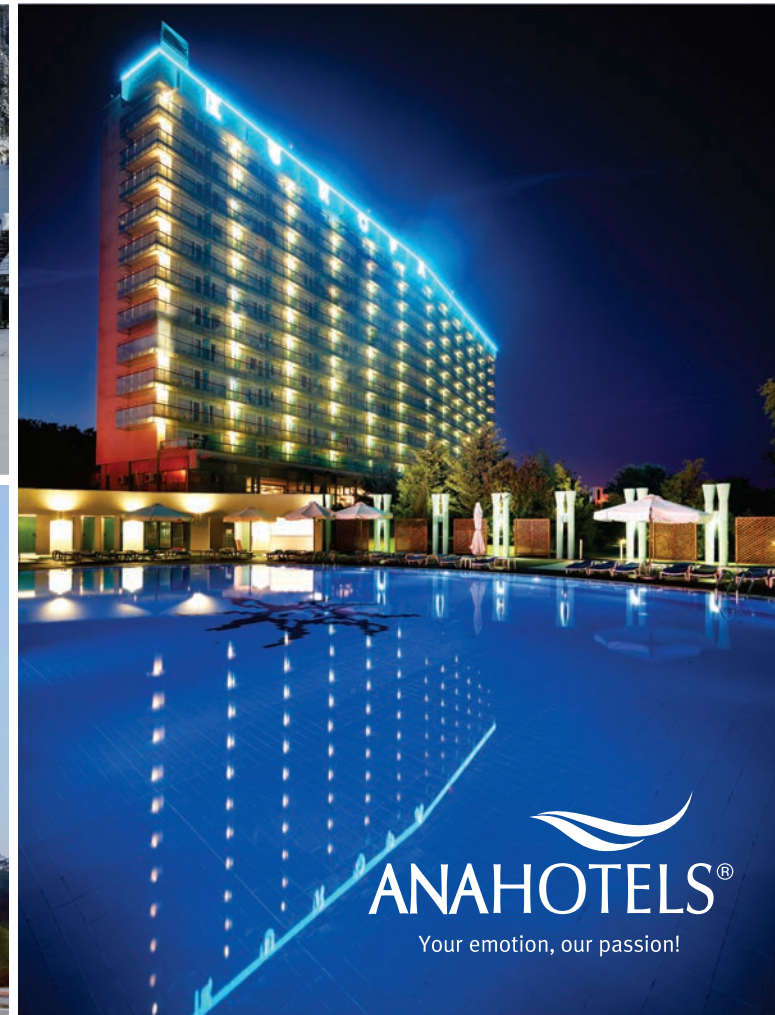
  
**ANAHOTELS**  
**BRADUL**  
Poiana Braşov

  
**ANAHOTELS**  
**POIANA**  
Poiana Braşov

  
**SPORT**  
Wellness Spa  
Poiana Braşov

  
**ANA ASLAN**  
Health Spa  
Eforie Nord





  
**ANAHOTELS®**  
Your emotion, our passion!





## An international standard in the heart of the city

Athénée Palace Hilton is so much more than a 5-star hotel! An architectural gem, a place overflowing with history, an uniquely elegant décor with top-modern features, it is also the ideal starting point when exploring Bucharest, being located right in the heart of the city, in the Revolution Square, within walking distance from the Old City Center, the liveliest neighborhood in Bucharest, with a large variety of pubs and restaurants.

Athénée Palace Hilton combines the sophistication of the French fin de siècle style with the ultimate modern comfort. The elegant and spacious rooms offer an ample view of the Romanian Athenaeum and of the grand Royal Palace.

Designed in 1914 by the renowned French architect, Théophile Bradeau, Athénée Palace Hilton is a top landmark of Bucharest. The hotel's original façade, once elaborately adorned, has witnessed many turning points in the national history and culture. As an artistic, intellectual and political landmark of the inter-war period, as a meeting point of spies and influencers, Athénée Palace Hilton has accommodated a great number of notable celebrities throughout the years: from heads of states to today's actors and musicians, including Kevin Costner, Aerosmith, Lady Gaga and who not...



Twin room



"Les Collonnades" Lobby





"Le Diplomate" Ballroom



Banqueting terrace



Roberto's Brunch area



English Bar

Morning coffee and the finest butter croissants have a unique taste at Café Athénée, with its great views over Calea Victoriei, the hub of high-end luxury boutiques in Bucharest.

Enjoy a refined Italian lunch or dinner at Roberto's and delve into its exclusive collection of local and international wines.

In the evening, the historical English Bar is the gathering place for a lively community of local business people. Here you can enjoy one of the 40 varieties of whiskey in a superb vintage decor.

"Le Diplomate" Ballroom is a national heritage monument, ideal for meetings, conferences, cocktails, receptions or product launches, accommodating up to 350 guests.

"Queen Mary" Ballroom is a multi-functional room, ideal for all types of meetings, conferences, cocktails, receptions or seminars.

A wide variety of elegant buffet and coffee-break choices, the latest technical and multimedia equipment and a complex range of decorations will turn your meetings at the Athénée Palace Hilton into memorable events.



Pool



Roberto's terrace



Café Athénée





## Nature-Inspired Sophistication

Located in a luxuriant green part of Bucharest, close to newly developed high-rise office buildings, the Henri Coandă International Airport and the Romexpo exhibition center, the Crowne Plaza Bucharest Hotel is a comfort and tranquility haven. The area allows for easy access to some of the most popular landmarks in the city, including the Arch of Triumph and the Herăstrău Park.

Totally refurbished in 2016, the rooms offer a generous space designed in warm colors and reflecting a contemporary and highly comfortable style. Each room is appointed with a balcony overlooking the hotel's private garden. For unmatched comfort and additional personalized services, you can choose our Club Fit rooms or the ultimate elegance of the Suites which will give access to our exclusive Club Lounge.

The newly renovated Spa & Wellness center, offering a traditional Hammam, a steam bath, dry sauna, an additional floor for yoga passionates and innovative therapies such as floatation pods and treatments, is the perfect escape from the hustle and bustle of the city.

Before or after a busy day, you can unwind by the pool or enjoy a relaxing massage at the Crowne Plaza Spa & Wellness center.



Standard room



Executive Suite Bathroom





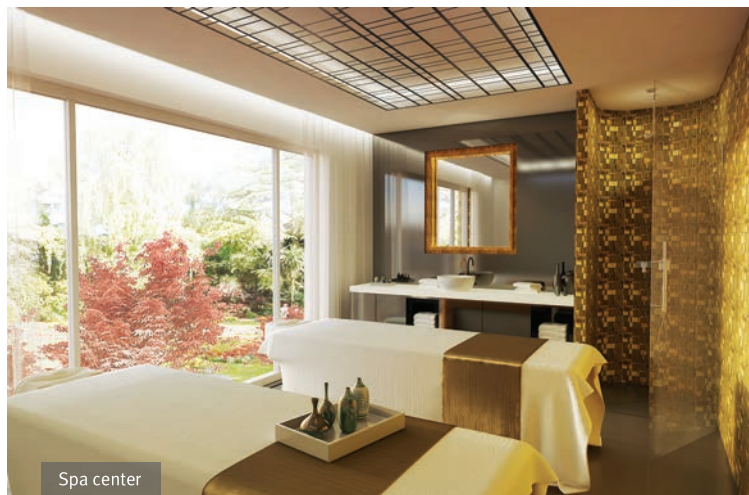
Crown Ballroom

The Conference Center features up to 16 meeting rooms, with modern facilities, most of them with natural daylight, access to the garden and with a total capacity of up to 1.500 guests.

- Crown Ballroom can host up to 600 guests in theater style, ultra-modern laser projection technology and direct access to the hotel garden. The ballroom is suitable for any type of conferences, high-profile meetings, gala events or private events.
- The Crowne Garden is the dream location for any open-air event, from spring till late autumn.
- State-of-the-art technical & multimedia event equipment is at all times available, as well as outside catering services.



Crown Ballroom



Spa center



The Garden - Cocktail setting



The Garden - Cinema setting

Newly renovated and reinvented with a modern and cozy architecture, the exclusive Club Lounge offers special privileges, from private Continental Breakfast to evening drinks and canapés for our most discerning guests.

The Crowne Plaza restaurants are the perfect choice for a rich American breakfast, a business lunch or a memorable dinner.

The Executive Chef's unique interpretation of Mediterranean cuisine brings a blend of architecture, show and tradition to each dish, which will delight all your senses.

Enjoy summers on the pine-shadowed terrace of Citronelle, while discovering the simple, healthy tastes of our menu and the distinguished list of wines.



Citronelle Restaurant



Club Lounge Dining Area





Bucharest.  
Just speechless!

GEORGE ENESCU  
FESTIVAL





ANAHOTELS®  
SPORT

Poiana Brașov



## High - Altitude Delights

Located in the heart of the Carpathian Mountains, in the beautiful Poiana Brașov resort, the ANA Hotels Sport is an all-season perfect choice, whether for business meetings and conferences, family holidays or week-end escapes. Fascinating Transylvania and the medieval city of Brașov, the world-famous Bran Castle (also known as Dracula's Castle) and the Peleș Castle, the former royal residence, are all within easy reach.

Through its noble and natural beauty, Ana Hotels Sport is an elegant ski-in/ski-out property within walking distance from (Capra Neagră) cable car which has the route right up to Postăvarul Mountain.

During summer, the winter wonderland turns into a green paradise with great opportunities for hiking enthusiasts.

Offering spectacular views of the resort, each of the 108 rooms of Ana Hotels Sport combines the coziness of the Bavarian style with ultimate modern design.



King room



Bathroom





Altitude Restaurant and its spectacular terrace welcome you with a menu full of character, selected from all over the world-renowned cuisines, as well as with a stunning view of the resort.

For a moment of absolute relaxation, you can ask for your favorite cocktail at the Lobby Bar.

The Conference & Events Center of Ana Hotels Sport features 11 meeting rooms of various sizes, with natural light and access to beautiful open-air terraces, having a total capacity of 500 persons.

All the Conference & Events guests from Ana Hotels in Poiana Braşov (Sport, Bradul, Poiana) can benefit from:

- One modular ballroom (3 parts) for up to 450 persons in theater style;
- 8 meeting rooms with natural light, for 10 -130 persons;
- Full-range technical equipment and facilities which include: screen, flipchart, video projector, audio equipment, multimedia, light show, DJ, dance floor, creative interior decorations for any type of events, product launches, dinner/ dance parties and any other special personalized requests;
- Foyer for coffee breaks and presentation booths;







## A Modern Wellness Sanctuary

A modern relaxation and wellness temple, Sport Wellness Spa takes your senses on a refreshing journey for the body, mind, and spirit altogether. You are invited to discover the healing power of massages and stress-relieving therapies, the benefits of body toning, facial, anti-ageing and energizing rituals.

The Spa comprises a swimming pool, a gym, saunas, as well as an outdoor hot tub, all of which become the ideal setting for sport, relaxation and pampering.







Facial treatment in tandem



Relaxation in tandem



Hot tub

**Massages and therapies** — for a state of well-being and for regaining natural body balance;

**Anti-ageing treatments** — body toning and skin smoothing rituals for extra firmness and shine;

**Detox treatments** — stress-relieving and detox techniques with a rejuvenating and energizing effect;

**Facial treatments** — skin care and regeneration for renewed glow and vitality;

**Slim & Fit** — body toning and shaping via personalized treatment, physical exercise and diet;



After Ski relaxation treat



Spa suite



Multi-massage room

**Well-being for Men** — relaxation, body toning and rejuvenation, specially tailored for gentlemen;

**Hydro-therapies** — relaxation, pampering, and full body rejuvenation through the healing powers of water



ANAHOTELS®  
BRADUL

Poiana Braşov



## Sophistication, coziness and magic in the mountains

Located in the very heart of the forest, at the base of Bradul ski slope in Poiana Braşov, Ana Hotels Bradul is the ideal destination for mountain escapades, fans of skiing or mountain hiking, adventurers, holidays or business events in any season.

The refined and subtle design of the hotel approaches a natural and noble elegance, specific of mansions and royal houses, with an intimate, comfortable atmosphere perfect for relaxation.

Precious natural essences such as the massive golden oak and the Carrara marble, velvety textures and the majestic scenery all around turn any stay from Ana Hotels Bradul into a powerful personal experience.



Deluxe room

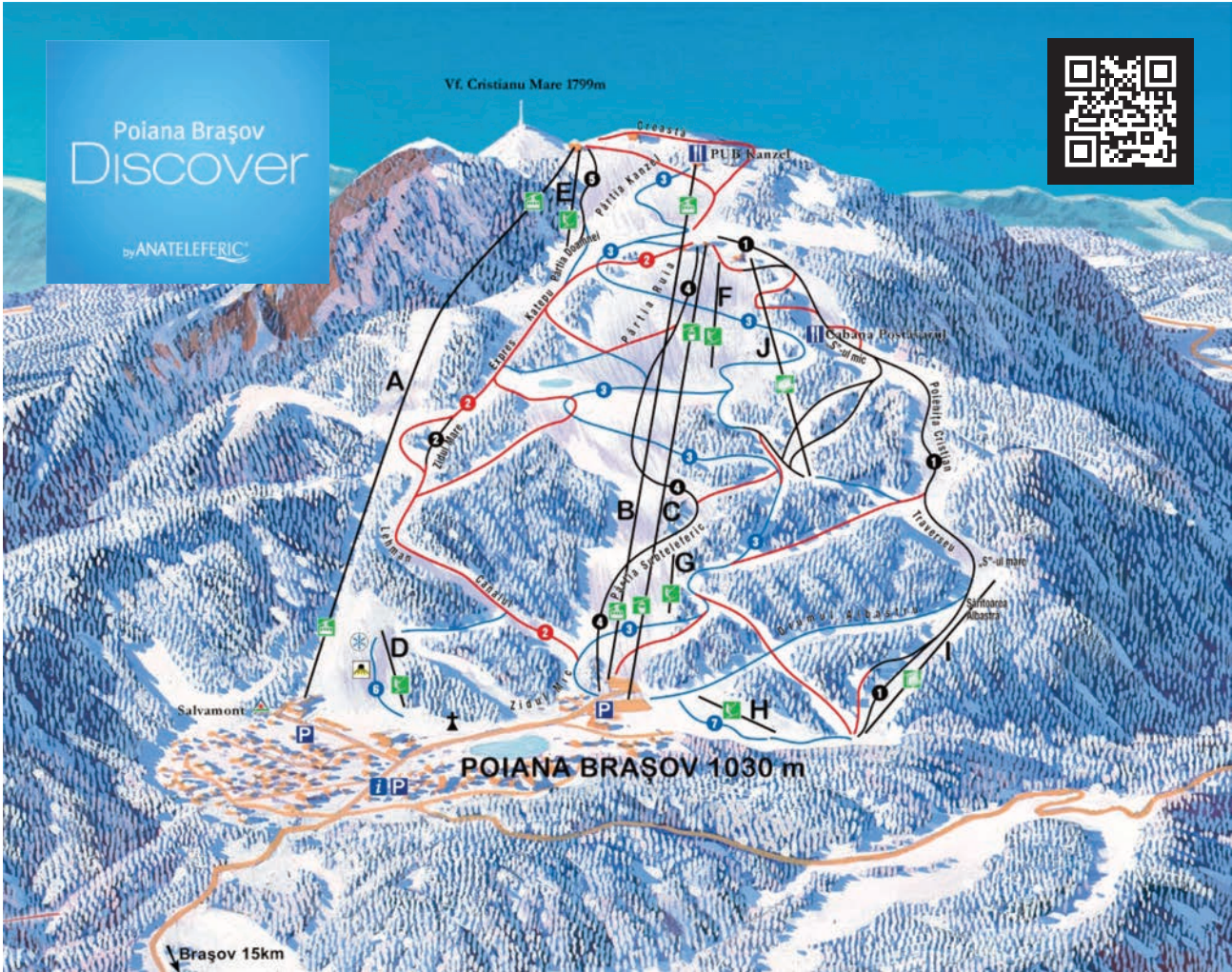


Bathroom



Lobby





You can enjoy the largest ski domain in Romania together with the instructors from the Ana Ski School, the most awarded ski school in the country.

Ana Teleferic owns and operates the cable transportation facilities in Poiana Brașov, consisting of two cable cabins, one gondola, two chair lifts and three ski lifts.

• Ana Ski School owns a modern rental Ski Center

• All the monitors speak English, French & German



◆ Easy slope    ◆ Medium slope    ◆ Difficult slope

🚠 Ski lift    🚡 Cable car    🚡 Gondola

	1	2	3	4	5	6	7
Slope name	LUPULUI	SULINAR	DRUMUL ROȘU	KANZEL	SUBTELEFERIC	BRADUL	STADION
Difficulty level	difficult	medium	medium-easy	difficult	difficult	easy	easy
Altitude departure (m)	1703	1705	1765	1760	1700	1106	1040
Arrival altitude (m)	975	1070	1050	1651	1050	1035	1010
Length (m)	2605	2820	4752	297	2200	430	612
Difference in level (m)	728	635	715	109	650	71	30
Aproximate surface (ha)	17	9	7	4	2	3	1
Average width	28	35	22	50	35	70	50
Nocturne illumination	-	-	-	-	-	YES	-
Artificial snow machines	YES	YES	YES	YES	YES	YES	YES





## Discover Transylvania!

Plan the journey of your life by choosing an adventure in Poiana Brașov, a complete history trip to Bran Castle or discover Brașov, the heart city of Transylvania and recharge your batteries in the beautiful fortress of Râșnov. No matter your age, tastes or energy levels, the mountain surroundings of Ana Hotels will keep you entertained all year long.



ANAHOTELS®  
EUROPA

Eforie Nord



## A Well-being & Relaxation Oasis

Offering a wide panorama of the sea just a few feet away, the grand Ana Hotels Europa boasts a fantastic location, close to the center of the Eforie Nord resort and to the Techirghiol Lake.

A lush green haven with an outdoor swimming pool, a soon to be open outside therapeutic pool and hammocks and the hotel's impressive summer garden are ideal for relaxation, summer dreaming and spoiling moments.

All the 221 rooms of the hotel have full sea view and are decorated in warm, marine colours, in an atmosphere reminding of sandy beaches and sunrises in the garden. The elegant, chic & cozy design, where natural colors intertwine with the classic-elegant style, the comfortable beds with fluffy pillows and soft sheets, as well as the everyday joy of watching the sunrise from the balcony create a holistic experience of bliss and ultimate relaxation.



King room



Lobby





Europa Ballroom



Ballroom - Wedding setting



Library corner



Blue Dolphin Restaurant



Blue Dolphin Terrace

The state-of-the-art Ana Hotels Europa Conference Center is located within walking distance from the beach and offers great views towards the garden. All 7 naturally-lit rooms feature cutting-edge technical amenities and can be customized for a wide variety of event types.

Ana Hotels Europa Conference & Events guests can always address any of the:

- Conference rooms with a capacity of up to 600 guests
- 4 rooms with natural lights and direct access to the garden
- modular room for up to 500 guests
- Business Center, Wi-Fi, audio-video equipment rental;
- Full-range meeting facilities: screen, flipchart, video projector, audio equipment, multimedia, light show, DJ, dance floor, interior decorations for any type of events, product launches, dinner/ dance parties and any other special demands;
- Bar and foyer for coffee breaks;

With a stunning view of the garden, the hotel's terrace becomes an extension of the peaceful, green haven surrounding the hotel. The sea breeze, the seagulls, the tonic green will give you peace and serenity at the beginning and at the end of each day, while our healthy food options will keep your body and spirit balanced and glowing!

Starting the summer season of 2018, an outdoor balneo complex with massage procedures, Techirghiol mud, bathing tubs, showers, hammocks and a pool of over 136 sqm with Techirghiol salt water will open its doors.







## A Universe of Holistic Beauty and Well-being

The renowned Ana Aslan Health Spa, located within the Europa Hotel's Complex, has been a landmark of the Romanian balneal and anti-ageing history for fifty years.

Ana Aslan Health Spa brings elegance and harmony to this renowned relaxation, well-being and beauty hub right by the sea.

The traditional spa therapies using the salty water and the organic mud from the Techirghiol Lake, along with innovative beauty and wellness rituals are ideal for revitalizing the body, mind, and spirit altogether. Ranging from balneal and stress-relieving therapies to facials and body-toning rituals, anti-ageing and energizing therapies, the Health Spa offers a wide variety of customized programs.



Indoor Techirghiol salty water pool



Mud Massage





SPA Boutique



Facial Therapy



Lava Shell Massage

**Personalized medical treatments** – The traditional spa therapies using salty water and mud from the Techirghiol Lake are complemented by innovative laser, ultrasound and ionization procedures.

**Facial rituals** – Intensive care and revitalization of the skin for extra brightness and elasticity;

**Body and anti-cellulite rituals** – Beauty and refinement through anti-cellulite treatments;

**Electro therapy** – Stimulating the recovery and strengthening of the entire body using the latest techniques;

## The Ana Aslan Health Spa offers for all our guests:

**Sports and Well-being** – Body toning, treatment and recovery through fitness, kinetics, and hydro-kinetic therapies in the salty water from Techirghiol Lake swimming pool;

**Massages and therapies** – Pampering, relaxation and revitalization using ancient rituals or modern techniques that engage the body in a state of pure relaxation;

**Hydro-thermal therapies** – In-depth hydration and treatment of the body through the healing power of water, plants and organic mud;

**Anti-ageing treatments** – Body toning and cell regeneration for a firm and bright-looking skin;

**Detox treatments** – Melting away stress and body toxins, triggering a strong energizing effect;



Golden Therapy



Hot Stone Massage



**The Romanian seaside  
and the Danube Delta.**  
Your must-see summer destination!










The loyalty card IN by Ana Hotels rewards you with bonuses from the hospitality services, depending on your membership status. By being part of the program, you will receive a nominal fidelity card with which you will enjoy the perks of our hotels.

Based on your annual spending, the bonuses are collected in your loyalty account, for further usage in our locations. The bonuses are calculated based on your membership status and on each of your spending.

IN Partner Ana Hotels locations: Ana Hotels Sport, Ana Hotels Bradul, Ana Hotels Poiana, Ana Hotels Europa, Crowne Plaza Hotel Restaurants & Bars, Ana Aslan Health Spa, Sport Wellness Spa and all the restaurants and lobby bars within them.

	MEMBER SILVER	MEMBER GOLD	MEMBER PLATINUM
			
Total necessary expenses in the last 12 months (Lei)	< 4.499	4.499 - 12.999	> 12.999
BONUSES (% of the final invoice for payments made in cash, bank payment order or credit card)			
• accommodation	• 3 %	• 8 %	• 8 %
• restaurants & bars	• 5 %	• 10 %	• 10 %
• spa	• 5 %	• 10 %	• 10 %
• Crowne Plaza Hotel restaurants & bars	• 10 %	• 15 %	• 20 %
• bonus validity	• 12 months	• 12 months	• 24 months
• other benefits	• Secured online access account management • Credit (bonus) use for Hotel services	• Secured online access account management • Credit (bonus) use for Hotel services	• Secured online access account management • Credit (bonus) use for Hotel services
		• Early check in (11:00 AM) (*) • Late check-out until 4:00 PM (*) • Check-in and reservation priority • Free upgrade to the next room type (*)	• Early check in (11:00 AM) (*) • Late check-out until 4:00 PM (*) • Check-in and reservation priority • Free upgrade to the next room type (*)
			• Upgrade to a suite (*) • Guaranteed guestroom availability up to 48h prior to arrival (*) • “Ski Pass” per stay in Ana Hotels Poiana Braşov (*) • Guaranteed availability for the “Sunday Brunch” at the Crowne Plaza Hotel • Welcome treatment (fruits and desserts) (*) • Complimentary individual massage session/ for a stay at Ana Hotels Poiana Braşov (*) • Complimentary babysitter for up to 2 children (*)





## Why choose ANA HOTELS?

- Premium locations in the mountains, at the seaside and in Bucharest
- Top quality products
- Constantly upgraded to match the latest design and functionality trends.
- Service standards benchmarked with the leading international hospitality chains (Intercontinental Hotels Group, HILTON)
- Complex multi - dimensional experiences for the guests
- High-end SPA facilities
- Flexible and state-of-the-art meeting & events facilities
- Fine international gastronomy experience



Spend quality time with your family either at the mountains or at the seaside, indoor and outdoor. From mini seasonal holidays to full travel packages, we give you all: treasure hunting, volleyball, badminton, team sports, carnival parties or handmade workshops; mountain biking in the middle of the Transylvanian forests, sightseeing & thematic parties in Bucharest or pool swimming & mini-disco at the seaside. Kids Club is the perfect loyalty program for children, within which families can meet the highest expectations of their little ones.





## More than 21 years of hospitality experience

1996 – George Copos founds Ana Hotels by acquiring Sport, Bradul and Poiana Hotels from Poiana Braşov and later on, Hotel Flora in Bucharest

1998 – Flora hotel has entered Intercontinental Hotel Group and rebranded to Crowne Plaza

2000 – Extensive renovation is carried out at Ana Hotel Bradul

2001 – Europa hotel from Eforie Nord is the fourth hotel to enter the Ana Hotels Portfolio; extensive renovation works are carried out

2002 – Renovation and extension works have been done on the Ana Aslan Health Spa, at Europa Hotel.

2004 – The investment at Ana Aslan Health Spa is finalized; Ana Yacht Club is inaugurated

2005 – Ana Hotels becomes major shareholder of Athenée Palace Hilton

2007 – Athenée Palace Hilton celebrates 10 years under the Hilton brand

2010 – Ana Hotels Sport Wellness Spa undergoes an Extensive renovation.

2014 – Athenée Palace Hilton celebrates 100 years of hospitality excellence in Bucharest

2015 – Ana Hotels Europa celebrates 50 years of hospitality on the Romanian seaside

2016 - Celebration of 20 years of excellence in hospitality of Ana Hotels. Crowne Plaza went through a full and significant renovation of all the rooms.

2017 - Inauguration of the new design for Hotel Bradul from Poiana, the Ballroom & extended Spa from Crowne Plaza

2018 - For the first time in Romania, an outdoor pool for balneo treatments with sapropelic mud from Techirghiol will be available at Hotel Europa