



TITANIC  
MARDAN PALACE

# CONCEPT

2025



# TITANIC HOTELS

---

Hotel management of AYG Corporate Group goes back to 1993 and the foundations of “TITANIC” brand were laid with the Ship-Shaped “Titanic Deluxe Lara” Hotel which has been put into service in Lara, Antalya in 2003.

With “Titanic Deluxe Lara” Hotel, AYG Group decided to expand and make investment in hotel management sector and due to the success of this new brand and the synergy it has created, the Group also decided to gather all its hotel business under the roof of “TITANIC” Brand and manage new hotels with this brand.

## SUB-BRANDS OF TITANIC HOTELS

---

AYG Group determines the sub-brands and concepts of the hotels invested in and operated by the Group, managed under the roof of Titanic Hotels in accordance with the locations and physical structures of facilities.

The hotels of Titanic Hotels managed by the Group, through its distinctive service approach in accordance with internationally recognized standards and long years of experience are classified as follows.

### PALACE HOTELS

Palace Resort - Palace City

### DELUXE HOTELS

Deluxe Resort - Deluxe Golf - Deluxe City

### BEACH RESORTS

BUSINESS HOTELS - PORT HOTELS - CITY HOTELS - COMFORT HOTELS

# BASIC CHARACTERISTICS OF TITANIC HOTELS

---

The Best Location in its Category,

Top-tier professional hotel management,

High guest satisfaction with personalized service presentation First-class product guarantee for all kinds of products, Premium Food and Beverage concept in its category,

Leadership vision with the Quality, Food Safety, Environment and Sustainability policies, High priority of the guest safety and health,

High Environmental and Waste Management Awareness, Supporting and participating in social projects,

Energy-friendly service approach,

High-level, uninterrupted and free Wi-Fi service.

## OUR SUSTAINIBILITY JOURNEY

---

The Titanic Mardan Palace was one of the first hotels to be accredited by the Global Sustainable Tourism Council (GSTC).

The Titanic Mardan Palace has implemented a sustainability management system in compliance with the criteria of the GSTC Global Sustainable Tourism Council, with particular emphasis on continuous protection of the environment and natural world, respect for human rights - including social and cultural values, standing against child exploitation, protecting the rights of vulnerable groups and cooperating with local communities.

By acting responsibly in all areas necessary for delivering sustainable tourism, we try to augment the customer experience, increase awareness among staff, guests and suppliers, increase efficiency, reduce expenses, and enhance the ecosystem and human well-being. Our hotel investment plans are aimed at maintaining the optimum standards for ensuring the continuous reduction of environmental impact and encouraging sustainable development and growth.

We ask our valued guests to stand by us and give us their support on this journey.



**TITANIC**  
HOTELS

TÜRKİYE | GERMANY | EGYPT





## GENERAL INFORMATION

Opening Date: 2009

Renovation Date: 2019

Category: Palace Resort 5-Star

Total Number of Rooms: 543

Company: Günaylar Otel İşletmeleri İnşaat San. Tic. AŞ. KUNDU BRANCH

Season: 12 Months

Total Space: 137.000 m<sup>2</sup>

Beach: 10.000 m<sup>2</sup> (Sand and turf)

Concept: Palace All Inclusive

Address: Kundu Mah. Yaşar Sobutay Blv. No: 450/1 07110 Aksu / Antalya

Tel: +90 242 310 41 00

Fax: +90 242 310 41 50

E-mail: mardan.palace@titanic-hotels.com

Web: mardanpalace.titanic.com.tr

[f/titanicmardanpalace](#)

[x/titanicmardanp](#)

[i/titanicmardanpalace](#)

[v/titanicmardanpalace](#)

## LOCATION AND ACCESS

Antalya City Center: **25 km**

Antalya Airport: **15 km**

Kundu: **5 km**

Belek: **15 km**

Cullinan Links Golf Club: **10 km**

Means of Access: **VIP Transfer, Taxi, Bus**

\* Pets not allowed.

\*The hotel enforces a dress code in all of its restaurants..

\*It is prohibited to ride bicycles, skateboards, rollerblades, hoverboards, or other vehicles in all indoor areas, and the use of camera-equipped unmanned aerial vehicles (drones) is prohibited in the hotel's outdoor areas.

\*\*\* Titanic Mardan Palace reserves its right to make changes on the concept without informing any 2nd and 3rd party real and legal persons.



Titanic Mardan Palace is located in Antalya/Kundu, Kundu Tourism Center, one of the most important holiday destinations of the World and Turkey. The hotel is among the limited number of brands from luxurious segment. The Hotel is 20 minutes to Antalya International Airport and 15 minutes to the city center and it is the most luxurious hotel of the world in its own class.

The interior and exterior architecture presenting the court magnificence, decoration embellished with works of art, rooms with different concepts, meeting and gala halls, unique SPA centers and exhibition of the Court atmosphere and Court services on the seafront are the most prominent characteristics of the Hotel.

## ARCHITECTURAL STRUCTURE

---

Titanic Mardan Palace embraces the city of Istanbul, which is globally recognized, with three distinct architectural designs:

### THE MAIDEN'S TOWER

---

The Maiden's Tower was originally built by the Athenian General Alcibiades in 408 BC to monitor the movements of Persian ships in the Bosphorus, controlling their entrances and exits. The tower was rebuilt in AD 1110 by Byzantine Emperor Alexius Comnenus in the form of a fortress. During the Ottoman Empire, the tower was renovated several times, with the most notable changes occurring in 1509 and 1763. The most recent construction work in 1998 gave the tower its present appearance.

### GALATA BRIDGE

---

The Galata Bridge is the oldest bridge known and recorded, built over the Golden Horn in Istanbul. It was constructed during the reign of Emperor Justinian in the 6th century. Sultan Bayezid II requested renowned Italian artist Leonardo da Vinci to design and project a bridge over the Golden Horn, unlike any other on Earth, with a length of 240 meters and a height of 24 meters. Had it been built, it would have been the longest bridge in the world. Unfortunately, the design, which was created with impressive artistic ambition, was not approved by the Sultan. Later, another famous Italian artist, Michelangelo, was invited to Istanbul by the Sultan to design a bridge. However, Michelangelo declined the invitation, and thus the idea of constructing a historical bridge over the Golden Horn was delayed until the 19th century.

The Titanic Mardan Palace Anatolian Building visually reflects the features of the famous historic Kuleli Structure. The historic building, which is currently used by Istanbul University as the Kuleli Military High School, was constructed in 1845. Over the years, it has served various civil needs, such as a hospital, orphanage, and school. After World War II, in 1947, the military school returned to Istanbul and resumed its service at this sacred and historic site.

### DOLMABAŦE PALACE

---

Dolmabahçe Palace was constructed between 1843 and 1856 by the palace architect Karabet Balyan, blending rich and diverse artistic features of European architecture under the command of Sultan Abdulmecid. The Ottoman sultans had many palaces over the centuries. However, until the completion of Dolmabahçe Palace, the Topkapi Palace was used as the official residence. The magnificent Titanic Mardan Palace Dolmabahçe Lobby, with its incredible view and a 21-meter-high glass ceiling adorned with surprising and traditional motifs chosen from the palace arts of the Ottoman dynasty, creates an atmosphere of a palace with its 2.800 m<sup>2</sup> expansive area, including the terrace and a sky-colored silhouette.

## CONCEPT

---

With utmost dedication to honoring you, our esteemed guests, the "TITANIC MARDAN PALACE" has crafted an exclusive Palace All-Inclusive concept inspired by the elegance of traditional Turkish hospitality and enriched by the storied experience of Titanic Hotels. Every detail has been meticulously prepared to provide you with a truly regal experience.



## REMINDERS

---

- Check-in time is at 14.00, and check-out time is at 12.00. We kindly ask that you complete your check-out process by 12.00, so we can ensure timely room availability for guests arriving after you.
- For individual hotel reservations and check-in procedures, the guest must be over 18 years old and present a valid ID.
- Alcohol Consumption: Alcohol is served only to guests over 18 years of age. In certain cases, guests may be required to provide proof of age with a photo ID.
- We highly recommend storing your valuables and money in the safe provided in your room, which is offered for free. The hotel does not accept responsibility for valuables kept outside the safe or in the event of loss.
- For health and safety reasons, we kindly ask that you do not bring food items from outside the hotel, and refrain from removing food and beverages from the hotel's dining areas.
- In accordance with Law No. 4207 on the Prevention of the Harms of Tobacco Products, smoking is prohibited in indoor areas of the hotel. Thank you for your understanding.
- The services provided by the hotel, including their locations and hours, may change according to seasonal conditions.
- Hazardous sports activities, water sports, and boat tours are undertaken at the participant's own risk and require a signed waiver.

## VISITOR HOURS

---

Hotel guests are allowed to receive visitors between 10.00 and 18.00. Guests expecting visitors from outside the hotel must inform the guest assistants at least 2 hours before their visitor's arrival and register at the reception. Visitors must present a passport or ID upon entry. Visitors may only meet with hotel guests in the lobby for a maximum of 30 minutes. For meetings outside the lobby or any meetings exceeding 30 minutes, a daily usage fee will be charged to all visitors. Hotel guests are always responsible for their visitors.

# WELCOMING / FAREWELL

*Feel Special at Every Moment.*

---



- Doorman, Valet, and Bellboy Services



- Free Parking Lot



- Car Wash Service



- Sparkling wine, homemade lemonade, fresh juices, chocolate covered fruit presentations as welcome treat



- Refreshing towel (Summer concept)



- Special reception for our handicapped guests



- Welcome and check-in by the Guest Assistant

## GUEST ASSISTANT CALL CENTER

---

Our Guest Assistant Call Center serves all our guests 24 hours. During your check-in procedures, the contact number of our Guest Assistant Call Center is provided to our guests, and their GSM numbers are requested. After registration processes, a “WELCOME” message and Hotel Information Link are sent to our guests. This department responsible for fulfilling special wishes and requests of our guests, also shares regularly for our guests to take advantage of the amenities of our hotel at the maximum extent.

## GUEST ASSISTANT SERVICE

---

Guest assistants ensure that your holiday is flawless from the moment of your arrival until your departure from the hotel. They anticipate your needs and fulfill them before you even ask, guiding you according to your expectations. From your drink preferences to your child's allergies, from your pillow selection to your favorite cuisine, guest assistants remember every detail and address it before you even make a request.

For guests staying in special room types (Pool Duplex Suite, Premium Pool Duplex Suite, Grand Duplex Suite, Royal Duplex Suite, Lake House, Presidential Suite, and King Suite), an assistant is assigned. Guests can communicate with their Guest Assistant on any matter until the day of departure.

# VALID CREDIT CARDS



\*\*Installment option is only provided for the sales through our Call Center.

# LANGUAGES



Turkish



English



German



Russian

# SHOPPING



Boutique



Market



Jeweler



Silver Shop



Optician



Gift Shop



Flower Shop



Leather Store

# FREE SERVICES



Free Wireless Internet



Game Centre



Wheelchair



Billiard



Bowling



\*\*Stroller (Deposit Fee is Collected)

# CHARGED SERVICES



Rent a Car



SPA & Hairdresser



Laundry & Dry Cleaning



Doctor & Nurse



Cabana



Hookah



Room Service



Photographer



Helicopter Tour & Transfer



À La Carte Restaurants



Squash & Tennis Lessons



Babysitter



Florist



Rental of Squash and Tennis Racket





# HONEYMOON CONCEPT

*Real Celebrations, Real Happiness!*

- Based on availability of the Hotel the best room in the related category
  - Flowers in the room
- Sparkling wine and Fruit plate at the check-in Cake and Turkish dessert plate
  - Honeymoon decoration and VIP Amenities set
- A special breakfast service in a requested day in our Mardan Bistro Restaurant
  - Priority in À La Carte reservations, Table decorations
    - 10% discount on the daily cabana usage fee
  - Free reservation in Italian or Fish À La Carte Restaurants in a requested day
    - \*\*20% discount in AMON SPA charged programs
    - \*\*20% discount on À La Carte Restaurant reservations
- \*\*Discount rights exclusive to the honeymoon concept are valid only once per use



# ACCOMODATION

## CLASSIC ROOM

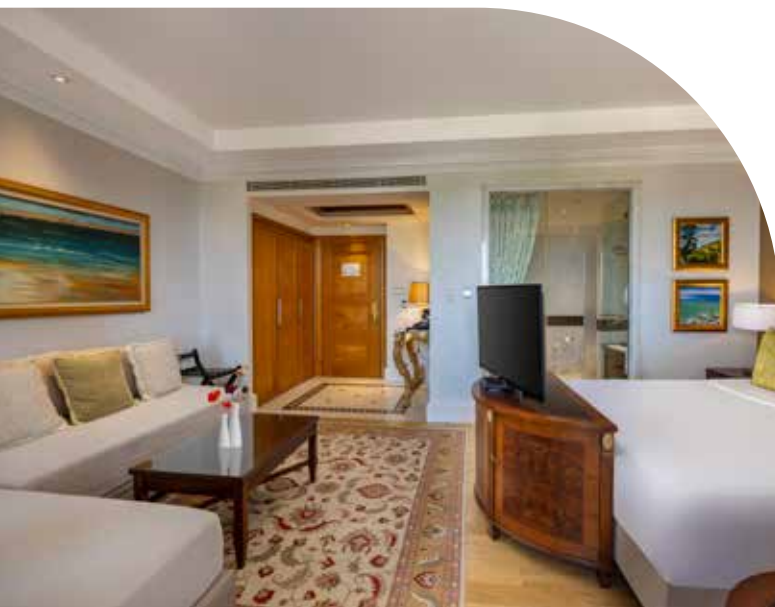
*Main Building | Maximum 2 Adults | 28 m<sup>2</sup>*



**Classic Room**, where comfort and elegance merge, is located in the main building and it offers a comfortable sleeping space for any need with options of either double bed (1 large bed - 1,80x2,00 m) or two single beds (1,00x2,00 m). The room also comes with various features such as 1 bathroom (bathtub or shower), WC, work desk, 1 LED TV, minibar and balcony. Featuring a cozy and modern atmosphere, Classic Room is ideal to rest and enjoy your holiday.

## PREMIUM ROOM (LAND – PARTIAL SEA / POOL VIEW)

*Main Building | Maximum 3 Adults | 42 – 48 m<sup>2</sup>*



PREMIUM ROOM EUROPEAN



PREMIUM ROOM ANATOLIA

**The Premium Room**, where comfort and elegance meet, offers a delightful accommodation experience with views of the sea, city, or pool. Located in the main building, this special room features a bedroom (1 large bed – 1,80x2,00 m or 2 separate beds – 1,00x2,00 m), a bathroom (with bathtub or shower), WC, a work desk, 1 LED TV, a safe, minibar, and a balcony, all equipped with comfortable and stylish details.

## DELUXE ROOM & JACUZZI

Main Building | Maximum 3 Adults | 61 m<sup>2</sup>



The **Deluxe Room** redefines luxury with stunning details carefully combined. Located in the main building, this special room features a spacious bedroom (with a king-size bed measuring 2,00x2,00 m), a Turkish bath-inspired bathroom with traditional touches (including a jacuzzi and shower), WC, a comfortable seating area, a work desk, 1 LED TV, a safe, minibar, and a private balcony, offering guests a truly unique experience.

## FAMILY ROOM

Main Building | Maximum 4 Adults + 1 Baby (0-1,99) | 55 - 60 m<sup>2</sup>



FAMILY ROOM DOLMABAĞÇE



FAMILY ROOM EUROPEAN

Designed with the comfort and peace of families in mind, the **Family Room** offers unforgettable accommodation with spacious and functional areas in both Anatolian and European options. Located in the main building, these rooms provide a comfortable space for families thanks to two separate bedrooms connected by an interconnecting door. The first bedroom features two separate beds (each 1,00x2,00 m), while the second bedroom has one large bed (1,80x2,00 m), one bathroom (with a bathtub and/or shower), a WC, a sofa, a work desk, 2 LED TVs, a safe, a minibar, and a private balcony, offering guests a unique experience.

The Family Room is carefully designed for you to experience both comfort and elegance with your family.



## PREMIUM FAMILY ROOM

Main Building | Maximum 4 Adults + 1 Child (2-11,99) 1 Baby (0-1.99) | 70 m<sup>2</sup>



Designed with the comfort and needs of families in mind, the **Premium Family Room** offers a unique accommodation experience with spacious and airy living areas. Located in the main building, this special room provides both privacy and a comfortable environment for family members, thanks to two separate bedrooms connected by an interconnecting door. The first bedroom features two separate beds (each 1,00x2,00 m), while the second bedroom has one king-size bed (2,00x2,00 m), one bathroom (with a bathtub and/or shower), a WC, a sofa, a work desk, 2 LED TVs, a safe, a minibar, and a private balcony, offering guests a unique experience.

\* Additionally, two of these rooms are designed as accessible rooms, offering comfortable accommodation for guests with special needs.

# SUITE ROOMS

## POOL DUPLEX SUITE SWIM UP

Main Building | Maximum 4 Adults + 1 Child (2-11.99) + 1 Baby (0-1.99) | 90 m<sup>2</sup>



**The Pool Duplex Suite Swim-Up** combines comfort and elegance, standing out with its two-story design and private terrace offering direct access to the pool. Ideal for families and guests seeking spacious accommodation, this room provides an unforgettable experience with its luxurious details and airy living spaces. Located in the main building, this special room features: Upper Floor: 1 bedroom (1 king-size bed – 2,00x2,00 m), private bathroom (bathtub and shower), WC, 1 LED TV. Lower Floor: 2 separate beds (each 1,00x2,00 m), private bathroom (shower), WC, work desk, 1 LED TV, seating area, minibar, safe, and a 22 m<sup>2</sup> private terrace with direct access to the pool, furnished with a seating group and sunbeds to accompany your moments of relaxation.



## PREMIUM POOL DUPLEX SUITE SWIM UP

*Main Building | Maximum 5 Adults + 1 Baby (0-1,99) | 110 m<sup>2</sup>*



**The Premium Pool Duplex Suite Swim Up**, which combines comfort and functionality with elegance, promises an unforgettable accommodation experience with its two-story structure and private terrace offering direct access to the pool. Ideal for guests seeking spacious accommodation, this room brings together luxurious details and airy living spaces. Located in the main building, this special room has two interconnected bedrooms on the upper floor:

- **1st Bedroom:** (1 king-size bed – 2,00x2,00 m)
- **2nd Bedroom:** Two separate beds (each 1,00x2,00 m)

Both bedrooms have two private bathrooms, each with a bathtub and/or shower, WC, work desk, 3 LED TVs, seating area, minibar, safe, and a balcony.

On the lower floor, there is a mini kitchen, mini fridge, microwave, dining table, and a 22 m<sup>2</sup> private terrace with direct access to the pool, furnished with a seating group and sunbeds to accompany your moments of relaxation.

## GRAND DUPLEX SUITE

Main Building | Maximum 5 Adults + 1 Baby (0-1,99) | 145 m<sup>2</sup>



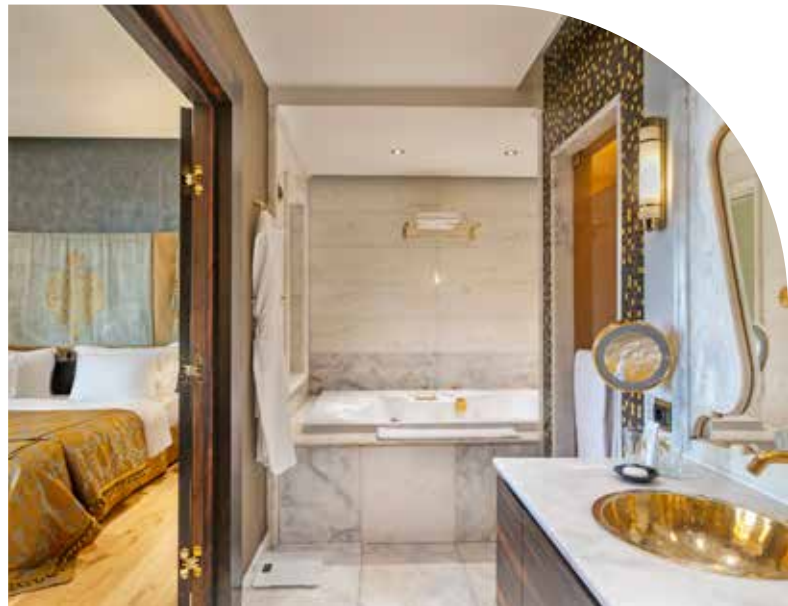
GRAND DUPLEX SUITE EUROPEAN



GRAND DUPLEX SUITE EUROPEAN



GRAND DUPLEX SUITE ANATOLIAN



GRAND DUPLEX SUITE ANATOLIAN

**The Grand Duplex Suite**, located on the 5th floor of the main building, is a two-story room with a very spacious and comfortable design. The upper floor is equipped with a bedroom featuring a king-size bed (2,00x2,00 m), a bathroom (with a jacuzzi and shower), WC, and 1 LED TV.

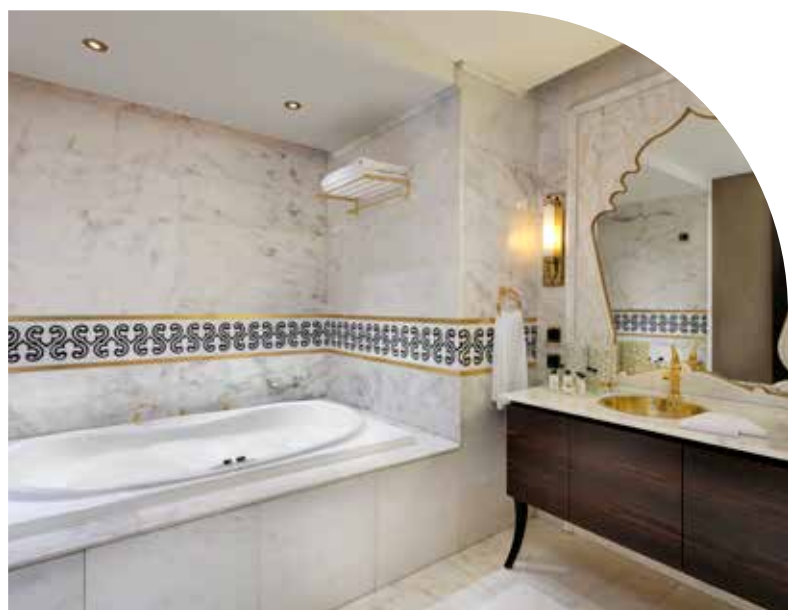
The entrance floor is furnished with two separate beds (each 1,00x2,00 m). This floor also offers a bathroom (with a shower), WC, seating area, 1 LED TV, minibar, safe, and a balcony.

This room design provides a comfortable opportunity for relaxation both in the bedroom and in the seating area on the entrance floor.



## ROYAL DUPLEX SUITE

Main Building | Maximum 5 Adults + 1 Baby (0-11,99) | 145 m<sup>2</sup>



**The Royal Duplex Suite** is a luxurious room located in the main building, featuring a two-story design.

**Upper Floor:** This floor includes 1 king-size bed (2,00x2,00 m), WC, jacuzzi bath, shower, Turkish bath, and 1 LED TV. The upper floor offers an excellent space for rest and relaxation.

**Ground Floor:** This floor features a bedroom with 1 twin bed (each 1,00x2,00 m). It also includes a bathroom, WC, shower, jacuzzi bath, living room, work desk, 1 LED TV, minibar, safe, sunbeds, gazebo, and a private terrace with a jacuzzi. This special terrace is a perfect space for outdoor enjoyment and relaxation in the jacuzzi.

This luxurious design optimizes both floors for different needs, offering opportunities for both relaxation and entertainment.

## LAKE HOUSE

*Lake Houses | Maximum 5 Adults + 1 Child (2-11,99) + 1 Baby (0-1,99) | 170 m<sup>2</sup>*



**The Lake House** is a room type located between the main building and the sea, in a private spot within the garden. This luxurious room offers a comfortable and spacious living area, featuring a total of 2 bedrooms, 2 bathrooms, and 1 living area.

**Master Bedroom:** This room includes 1 large bed (1,80x2,00 m). Additionally, the room offers a WC, a Turkish bath-style shower, a jacuzzi bath, 1 LED TV, and a minibar. It provides a very comfortable space for relaxation and rest.

**Second Bedroom:** This room features 2 single beds (each 1,00x2,00 m). It also includes a bathroom, WC, Turkish bath-style shower, jacuzzi bath, and 1 LED TV. This bedroom is also designed for comfort.

The spacious and elegant living area includes two separate seating sections, a large dining table, a work desk, 1 LED TV, minibar, and a safe. This area offers a comfortable environment to relax, dine, and work.

Exclusively for Lake House guests, a private swimming pool, bar, and sunbathing area are located at the front. This area is reserved solely for Lake House guests, offering a more private and peaceful experience.



## PRESIDENTIAL SUITE

*Main Building | Maximum 5 Adults + 1 Child (2-11,99) + 1 Baby (0-1,99) | 220 m<sup>2</sup>*



**The Presidential Suite**, located in the main building, offers a luxurious and spacious accommodation area. This room stands out for its elegance and comfort, featuring a total of 2 bedrooms, 2 bathrooms, and 1 living area.

**Master Bedroom:** This room includes 1 king-size bed (2,00x2,00 m). Additionally, it offers a comfortable bathroom, WC, shower, jacuzzi bath, 1 LED TV, and a minibar. The master bedroom provides a perfect environment for relaxation and rest.

**Second Bedroom:** This room features 2 single beds (each 1,00x2,00 m). It also includes a bathroom, WC, shower, jacuzzi bath, and 1 LED TV.

The living area is furnished with a specially designed seating group, and also includes a large dining table, work desk, minibar, safe, and 1 LED TV. This area offers a spacious and comfortable environment for both relaxation and work.

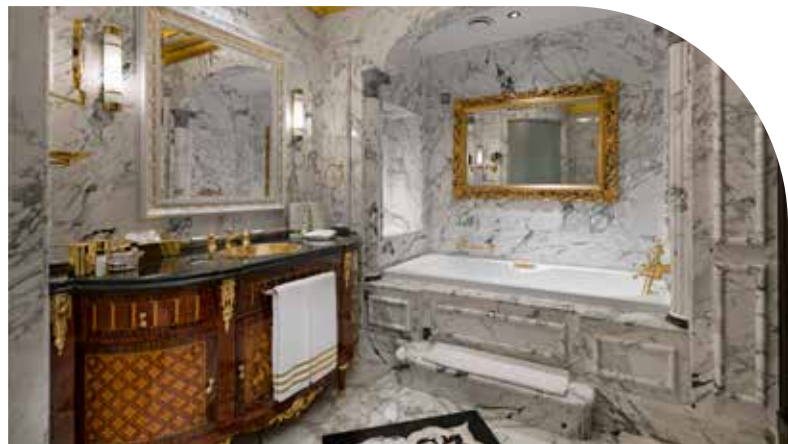
The Presidential Suite is equipped with its own private terrace. The terrace features a sunbathing area, sunbeds, a cabana, and a jacuzzi area. It is an ideal space for relaxing outdoors and enjoying pleasant moments.

Offering a luxurious and comfortable holiday experience, the Presidential Suite is an excellent choice for guests who seek both elegance and comfort. Both its interior and exterior amenities are designed to cater to all needs.



## KING SUITE

Main Building | Maximum 5 Adults + 1 Child (0-11,99) + 1 Baby (0-1,99) | 600 m<sup>2</sup>



**The King Suite**, located on the 8th floor of the main building, is an extraordinary luxury suite offering exceptional space. With a total area of 600 m<sup>2</sup>, including 115 m<sup>2</sup> and 80 m<sup>2</sup> of 2 private terraces, each offering different views of the sea, pool, and forest, it provides a unique experience.

**Living Room:** The living room is equipped with a modern and stylish seating group, a large dining table, a work desk, a custom wooden minibar, and a special sound system. Additionally, there is 1 LED TV. The living room offers a spacious and comfortable area to relax and entertain guests.

**Master Bedroom:** The master bedroom features a king-size bed (2,00x2,00 m), a walk-in closet, a seating area, an LED TV, a minibar, and a small spa area. The spa area provides a relaxing atmosphere with a sauna, 2 showers, a toilet, and a bidet.

**Second Bedroom:** This room has a king-size bed (2,00x2,00 m), a bathroom, a seating area, a safe, a minibar, and an LED TV.

**Cinema and Entertainment Area:** The suite also includes a cinema room and entertainment facilities such as PlayStation, ensuring guests have a fun and enjoyable time.

**Study Room:** There is also a study room designed as a private space for work.

**Kitchen:** A modern and fully equipped kitchen is provided, offering a comfortable living space for long-term stays.

**Private Terraces:** The King Suite has 2 private terraces, each offering different views. These terraces feature sunbathing areas, sunbeds, a cabana, and a jacuzzi area. The terraces provide the perfect setting for outdoor enjoyment and special moments.

The King Suite, with its unique views, luxurious amenities, and expansive space, offers an extraordinary accommodation experience for the most special guests. It combines comfort and elegance in both its interiors and exteriors.







# OUR SERVICES BASED ON ROOM TYPES

Services	Classic Room	Premium Room	Deluxe Room & Jacuzzi	Family Room	Premium Family Room
Guest Assistant Call Center (Instant Messaging Service)	X	X	X	X	X
Large Minibar	X	X	X	X	X
Pillow Menu (5 Options)	X	X	X	X	X
Kettle and Tea & Coffee Set	X	X	X	X	X

# OUR SERVICES BASED ON SUITE TYPES

Services	Pool Duplex Suite Swim Up	Premium Pool Duplex Suite Swim Up	Grand Duplex Suite	Royal Duplex Suite	Lake House	Presidential Suite	King Suite
VIP Airport Transfer (for Minimum 7 days or longer stays)				✓	**	✓	✓
CIP Terminal Access (for Minimum 7 days or longer stays)						✓	✓
Express Check-in				✓	✓	✓	✓
Flower Bouquet				✓	✓	✓	✓
Turn Down Service				✓	✓	✓	✓
Guest Assistant Service	✓	✓	✓	✓	✓	✓	✓
Guest Assistant Call Center Service (Communication through Whatsapp)	✓	✓	✓	✓	✓	✓	✓
Special Butler Service							✓
Free Room Service				✓		✓	✓
VIP Set Up on Check In Day	✓	✓	✓	✓	✓	✓	✓
XL Minibar	✓	✓	✓	✓	✓	✓	✓
Pillow Menu (5 Pillow Options)	✓	✓	✓	✓	✓	✓	✓
Cabana				✓		✓	✓
Laundry and Ironing Service						✓	✓
Schiller Tea & Coffee Set	✓	✓	✓	✓	✓	✓	✓
Chivas Regal 12, Vodka, Red Wine, Sparkling Wine				✓	✓	✓	✓

\*\* VIP Airport Transfer (for Minimum 7 days or longer stays) valid only for Titanic Web and Call Center bookings.

# CHARACTERISTICS BASED ON ROOM TYPES

Room Types Characteristics	Classic Room	Premium Room	Deluxe Room & Jacuzzi	Family Room	Premium Family Room	Pool Duplex Suite Swim Up	Premium Pool Duplex Suite Swim Up	Grand Duplex Suite	Royal Duplex Suite	Lake House	Presidential Suite	King Suite
Bathrobe and Slippers	✓	✓	✓	✓	✓	✓	✓	✓	✓	✓	✓	✓
Weight Scale	✓	✓	✓	✓	✓	✓	✓	✓	✓	✓	✓	✓
Living Room							✓		✓		✓	✓
Single Bathroom	✓	✓	✓	✓								
2 + Bathrooms					✓	✓	✓	✓	✓	✓	✓	✓
Hygiene Set for Ladies	✓	✓	✓	✓	✓	✓	✓	✓	✓	✓	✓	✓
Hygiene Set for Men	✓	✓	✓	✓	✓	✓	✓	✓	✓	✓	✓	✓
Shaving/Make-up Mirror	✓	✓	✓	✓	✓	✓	✓	✓	✓	✓	✓	✓
Hairdryer	✓	✓	✓	✓	✓	✓	✓	✓	✓	✓	✓	✓
Shower Cabin	✓	✓	✓	✓	✓	✓	✓	✓	✓	✓	✓	✓
Jacuzzi			✓					✓	✓	✓	✓	✓
Digital Safety Deposit Box	✓	✓	✓	✓	✓	✓	✓	✓	✓	✓	✓	✓
Wi-Fi Internet	✓	✓	✓	✓	✓	✓	✓	✓	✓	✓	✓	✓
Direct Phone Connection	✓	✓	✓	✓	✓	✓	✓	✓	✓	✓	✓	✓
LCD Smart TV	✓	✓	✓	✓	✓	✓	✓	✓	✓	✓	✓	✓
Air-Conditioner	✓	✓	✓	✓	✓	✓	✓	✓	✓	✓	✓	✓
Table&Chairs in the Balcony	✓	✓	✓	✓	✓	✓	✓	✓	✓	✓	✓	✓
Sun Bed&Awnings,Terrace						✓	✓		✓	✓	✓	✓
Cabana at the Terrace									✓		✓	
Jacuzzi at the Terrace									✓		✓	✓



# FOOD & BEVERAGES

## GENERAL INFORMATION ON PALACE ALL INCLUSIVE FOOD & BEVERAGES

High Hygiene Standards in all Services

Products produced from daily and fresh goods in all units

Beverages represented at all bars in their original packages

Special food service for the guests with allergen requests

Food service for the guests with special food requests for their children

Beverage service at the swimming-pool to your sun beds

Patisserie

Snack Restaurant

Mardan Bistro

Original brands are used for all foods and beverages

Carte D'or / Homemade ice cream

Premium alcoholic and nonalcoholic beverages

Beverage service to your sun beds at the beach by QR Code

## MAIN RESTAURANT

Welcoming at the Entrance

Large and spacious indoor and outdoor space

Vegan and diet food service

Freshly squeezed orange juice and Detox beverage service at breakfast

Hot and cold beverage service during breakfast

Late Breakfast service

Bakery products service in all meals

Pita varieties at lunch and dinner

Hot and cold food services instantly prepared in all meals

Grilled Meat, Fish and Chicken in all meals

Fresh cheese and charcuterie buffet at all meals

Premium local and import alcoholic and nonalcoholic beverages

Kids' buffet



## SNACK RESTAURANT

Welcoming at the Entrance

Options from Snack Menus with Rich Alternatives

À La Carte Service

Pizza and Pita varieties

Kebab, Hamburger, Grills varietie

Premium local and import alcoholic and nonalcoholic beverages

## PÂTISSERIE

Extensive patisserie showcase with lots of varieties

Daily fresh products prepare with high-quality ingredients

Self Service and À La Carte Service

Hot and cold high-quality and branded nonalcoholic beverages

## À LA CARTE RESTAURANT

Reservation is necessary

Service fee is collected

Welcoming at the entrance and escort to the table

Atmosphere and decoration appropriate with the theme

Elite local and import alcoholic and nonalcoholic beverages

•Dear Guests, We kindly ask for your participation in evening meals with appropriate attire. We would like to remind you that guests wearing unsuitable clothing such as shorts, sleeveless T-shirts, flip-flops, etc., will not be allowed into the restaurant. Thank you in advance for your understanding.

•The opening and closing hours of the Food & Beverage outlets are arranged based on the summer season and hotel occupancy. During the winter period, there are changes in the number of Food & Beverage outlets and their opening and closing hours.





## SERVICE HOURS OF FOOD AND BEVERAGE UNITS

### FOOD UNITS

### IN SUMMER SEASON

Restaurant	Service	Opening-Closing	Concept
Bosphorus Dining	Open Buffet	08.00 - 11.00 12.30 - 14.30 19.00 - 21.30	Palace All Inclusive
Mardan Bistro	À La Carte	24 Hours	Palace All Inclusive
Stella's Snack	Snack Bar	12.30 - 16.00	Palace All Inclusive
Sapore Italian Lunch	Snack Bar	12.30 - 16.00	Palace All Inclusive
Dolmabahçe Patisserie	Patisserie	13.00 - 20.00	Palace All Inclusive
Caprice Patisserie	Patisserie	12.30 - 18.00	Palace All Inclusive
Ice Cream Bar	Patisserie	12.30 - 18.00	Palace All Inclusive
Waffle (Caprice Patisserie)	Patisserie	12.30 - 18.00	Palace All Inclusive
Fruit Bar	Snack Bar	12.30 - 18.00	Palace All Inclusive
Beef Grill Club	À La Carte	19.00 - 21.30	Extra
Sakura Asian Cuisine / Teppanyaki	À La Carte	19.00 - 21.30	Extra
Aqua Marine	À La Carte	19.00 - 21.30	Extra
Pascarella Italian Cuisine	À La Carte	19.00 - 21.30	Extra
Yamas	À La Carte	19.00 - 21.30	Extra

### IN WINTER SEASON

Restaurant	Service	Opening-Closing	Concept
Bosphorus Dining	Open Buffet	08.00 - 11.00 12.30 - 14.30 18.30 - 21.00	Palace All Inclusive
Mardan Bistro	À La Carte	24 Hours	Palace All Inclusive
Dolmabahçe Patisserie	Patisserie	13.00 - 20.00	Palace All Inclusive
Sapore Italian Lunch	Snack Bar	12.30 - 16.00	Palace All Inclusive
Fruit Bar	Snack Bar	12.30 - 16.00	Palace All Inclusive
Beef Grill Club	À La Carte	18.30 - 21.00	Extra
Aqua Marine	À La Carte	18.30 - 21.00	Extra
Pascarella Italian Cuisine	À La Carte	18.30 - 21.00	Extra



## BARS IN SUMMER SEASON

Bar	Form	Opening-Closing	Concept
Pool Bar	Bar	09.00 - 18.00	Palace All Inclusive
Hürrem Lobby Bar	Bar	24 Hours	Palace All Inclusive
Mykonos Beach Club	Club	09.00 - 19.00 22.30 - 01.00	Palace All Inclusive
Schiller Coffee & Bar	Cafe	09.00 - 18.00	Palace All Inclusive
Leonardo Bridge Pool Bars	Bar	10.00 - 18.00	Palace All Inclusive
Scorpion Bar	Bar	09.00 - 18.00	Palace All Inclusive
Lake Houses Bar	Bar	10.00 - 18.00	Palace All Inclusive
Vitamin Bar	Bar	09.00 - 20.00	Palace All Inclusive
Spa Vip Bar (Detox Bar)	Bar	09.00 - 20.00	Palace All Inclusive
Indoor Pool Bar	Bar	09.00 - 20.00	Palace All Inclusive
Lounge Bar	Bar	13.00 - 00.00	Palace All Inclusive
Bebek Garden Cafe & Bar	Bar	16.00 - 00.00	Palace All Inclusive
Nevizade Square Bar	Bar	21.00 - 23.00	Palace All Inclusive
Tower Roof Bar	Bar	20.00 - 00.00	Extra
Secret Terrace Bar	Bar		Extra / Special Organization
Wine Cellar	Cellar		Extra / Special Organization

## IN WINTER SEASON

Bar	Form	Opening-Closing	Concept
Hürrem Lobby Bar	Bar	24 Hours	Palace All Inclusive
Vitamin Bar	Bar	09.00 - 20.00	Palace All Inclusive
Indoor Pool Bar	Bar	09.00 - 20.00	Palace All Inclusive
Monkey Night Club	Club	23.00 - 01.00	Palace All Inclusive
Lounge Bar	Bar	10.00 - 00.00	Palace All Inclusive
Mykonos Beach Club	Club	09.00 - 16.00	Palace All Inclusive
Bebek Garden Cafe & Bar	Bar	10.00 - 00.00	Palace All Inclusive (Hookah Service Extra)
Wine Cellar	Cellar		Extra / Special Organization

# PALACE ALL INCLUSIVE BEVERAGE CONCEPT

## IN SUMMER SEASON

**Whiskies:** \*\*Chivas Regal 18 YO, Jameson Black Barrel, Chivas Regal 12 YO, Gentleman Jack, Jack Daniel's, J. Walker Gold Label, J.Walker Black Label, Glenfiddich, The Singleton, Ballanlittines, The Glenlivet, JB Rare, Jim Beam, Talisker, Monkey Shoulder

**Vodkas:** \*\*Grey Goose, Belvedere, Finland Vodka, Ketel One, Absolut, Smirnoff

**Gins:** Beefeater, Tanqueray Gin, \*\*Hendrick's Gin, Gordon's Gin, Bombay, Sapphire, Malfy

**Rums:** Captain Morgan Gold, Captain Morgan White, Havana Club Anos 3, Havana Club Anos 7, Bacardi

**Tequilas:** Olmeca Gold, Olmeca Blanco, \*\*Volcan Tequila

**Cognacs:** Cognac VSOP, Cognac VS, Sorau Brandy, Metaxa 7\*

**Starters:** Yeni Rakı Yeni Seri, Yeni Rakı Tekirdağ, Beylerbeyi Göbek, Efe Yeşil, Efe Tekirdağ Gold, Tekirdağ No:10, Martini Bianco, Martini Rosso, Martini Extra Dry, Aperitivo Bitter, Lemoncello, Uzo Orange Sec

**Beers:** Efes Pilsen, Miller / Beck's, Guinness, Corona, Heineken, Budweiser

**Liquors:** Kahlua, Sambuca, Malibu, Tia Maria, Safari, Fernet Branca, Bailey's Disaronno, Jagermeister, Archer's, Skinos Mastiha, Cardinal Melon, Grappa

\*\* Service at the Hürrem Lobby Bar.

## IN WINTER SEASON

**Whiskies:** Chivas Regal 12 YO, Gentleman Jack, Glenfiddich, Ballantines, J.Walker Black Label, Black Label, The Singleton, Dubliner, Jameson Black, Barrel, Jim Beam, Jack Daniel's, Jameson

**Vodkas:** Gilbey's, Smirnoff, Absolut

**Gins:** Tanqueray Gin, Gordon's, Bombay Sapphire, Beefeater

**Rums:** Captain Morgan Gold, Captain Morgan White, Havana Club Anos 3, Havana Club Anos 7, Bacardi

**Tequilas:** Olmeca Blanco, Olmeca Gold

**Cognacs:** Cognac VS, Metaxa, Sorau Brandy

**Starters:** Yeni Rakı Yeni Seri, Yeni Rakı Tekirdağ, Beylerbeyi Göbek, Efe Yeşil Efe, Tekirdağ Gold, Martini Bianco, Martini Rosso, Martini Extra Dry, Aperitivo Bitter, Lemoncello, Uzo, Orange Sec

**Beers:** Efes Pilsen, Miller, Beck's

**Liquors:** Kahlua Sambuca, Malibu, Tia Maria, Safari, Fernet Branca, Bailey's Disaronno, Jagermeister, Archer's, Skinos Mastiha, Cardinal Melon, Grappa

• Guests under the age of 18 are not served alcoholic beverages in restaurants and bars.

• The hotel reserves the right not to serve alcoholic beverages in case guests are intoxicated to the degree of self-damage, even if the payment is made.

# PALACE ALL INCLUSIVE MINIBAR CONCEPT

*For the comfort of our guests, the minibar is regularly restocked with fresh and updated items every day.*

## IN SUMMER SEASON

**Large Minibar:** 2 Efes 25 cl., 2 Coca Cola, 2 Ice Tea Peach/ Lemon, 1 Coca Cola Zero, 1 Fanta, 1 Sprite, 4 Bottles of water, 3 Fruit Juice, 2 Sodas, 1 Chocolate Milk, 1 Milk, 1 Chocolate Wafer, 1 Cracker, 1 Eti Form, 1 Cipsos, 1 Snickers, Mixed Nuts

**X Large Minibar:** 2 Miller, 2 Efes 25 cl, White Wine (75 cl), 2 Coca Cola, 2 IceTea Peach / Lemon, 1 Coca Cola Zero, 1 Fanta, 1 Sprite, 4 Bottles of Water, 3 Fruit Juice, 2 Sodas, 1 Chocolate Milk, 1 Milk, 1 Cracker, 1 Eti Form, 1 Cipsos, 1 Snickers, 1 Mc Vities Biscuit, 1 M&M, Mixed Nuts

## IN WINTER SEASON

**Large Minibar:** 2 Efes 25 cl., 1 Coca Cola, 2 Ice Tea Peach/ Lemon, 1 Coca Cola Zero, 1 Fanta, 1 Sprite, 4 Bottles of water, 2 Fruit Juice, 2 Sodas, 1 Chocolate Milk, 1 Milk, 1 Chocolate Wafer, Cracker, 1 Cipsos, 1 Snickers, Mixed Nuts

**X Large Minibar:** 2 Miller, 2 Efes 25 cl, 2 Coca Cola, 2 Ice Tea Peach / Lemon, 1 Coca Cola Zero, 1 Fanta, 1 Sprite, 4 Bottles of Water, 3 Fruit Juice, 2 Sodas, 1 Chocolate Milk, 1 Milk, 1 Cracker, 1 Eti Form, 1 Cipsos, 1 Snickers, 1 Mc Vities Biscuit, Mixed Nuts





## SWIMMING POOLS

Offering a comfortable swimming experience with its elegant design and advanced technological features, the indoor and outdoor pools are available in various sizes and equipped with modern technology, ensuring they can be used comfortably in any weather conditions.

Both pools prioritize hygiene and safety. The facilities are designed to meet the needs of all visitors, maximizing the enjoyment of swimming.

### SUMMER SEASON

Swimming Pool	Length	Width	Depth	Area m <sup>2</sup>
Main Swimming Pool	264 m	60 m	1,4 m	9.700 m <sup>2</sup>
Overall Total of 6 Swimming-Pools in the Lake House Section			1,4 m	1.200 m <sup>2</sup>
Aquapark (6 safe kid slides with different characteristics)	37 m	32 m	25 cm	1.184 m <sup>2</sup>

### WINTER SEASON

Swimming Pool	Length	Width	Depth	Area m <sup>2</sup>
Heated Indoor Swimming Pool	35 m	15 m	1,4 m	470 m <sup>2</sup>
Heated Outdoor Swimming Pool	24 m	9 m	1,4 m	210 m <sup>2</sup>



# BEACH

## *Special White Sand Beach and Pier*

Our white sandy beach, designed to offer a unique seaside experience, stands out with its scorpion-shaped pier. In a serene atmosphere, the deep blue of the sea and the pure white of the beach come together in perfect harmony.

The fine white sand on the beach not only enhances the visual appeal but also provides an ideal setting for a leisurely walk and a perfect spot for those looking to enjoy the sun.

The specially designed scorpion-shaped pier extends into the sea, offering guests the opportunity to explore every aspect of the water. This elegant design adds an aesthetic touch to the beach and ensures guests have a one-of-a-kind experience at the meeting point with the sea.







# AMON SPA

*Forget the time, embrace tranquility. Relax with the soothing touch of water.*

AMON SPA, designed by globally famous KLAFS My Sauna and Spa is situated on 7.500 m<sup>2</sup> area. In the center with the characteristics of the latest trends in the sector, there are sauna and steam rooms unmatched in Turkey.

## VIP SPA

A special section with 800m<sup>2</sup> area.

### Mardan Suite

VIP Bar, Swimming-Pool, Jacuzzi, Turkish Bath and Warm Section, Sauna, Steam Room, Foot Showers, Resting Space, Bedroom, Dressing Rooms, Dining Room, Sofa Group with a Fireplace, Care Room

### Red Suite

Sauna for 2, Steam Room, Jacuzzi, TV, Resting Bed and Care Space

### Blue Suite

Sauna for 2, Steam Room, Jacuzzi, TV, Care Bed

### Private

Our special application area. There are 34 care rooms in total including 8 Massage Rooms, 8 Beauty Rooms (LPG Pressotherapy, Vacustyler, Sonostyler, SPM); 8 Rooms (Therapy Pool, Balneo Therapy Room, Jet Shower Room, Affusion Shower Room, Skin Care Room with 2 Beds); 9 Care Rooms and 1 Solarium.

### Wet Areas

In the common space (Warm Stone Beds, Fireplace Room, Resting Space with Aroma Therapy, 3 Saunas, 1 Steam Room, 1 Bath, 1 Salt Room) serve for free.

### Sauna Section

Saunas (110°C Russian Sauna, 90°C Finnish Sauna, 65°C Bio Sauna); 2 Steam Rooms

Foot Shock Shower Area, Resting Space

Turkish Bath and Special Care Rooms

Tropic Warm Aroma Scented and Icy Cold Showers

Hydrotherapy, Affusion Therapy, Jet Shower

Indoor Swimming-Pool and Kiddy Swimming-Pool, Heated Outdoor Swimming Pool

Vitamin & Detox Bar

Beauty Center and Skin Care Center

### Free

Warm Stone Beds, Fireplace Room, Resting Space with Aroma Therapy, 3 Saunas, 3 Steam Rooms, 1 Bath, 1 Salt Room, Foot Shock Shower Space, Turkish Bath, Tropic Warm Aroma Scented and Icy Cold Showers, Indoor Swimming-Pool and Kiddy Swimming-Pool

### Charged

VIP SPA, SPA Suits, Massages and Therapies, Skin and Body Cares, Bath Services



## TINI KIDS CLUB

In an environment designed to offer the opportunity for an independent holiday from the family, with special areas and activities for both play and education for children of all ages, kids can enjoy a fun and educational experience. Children's clubs, age-appropriate activities conducted with professional instructors, creative workshops, and safe play areas contribute to both the physical and mental development of children. Moreover, the enjoyable activities offered for children also help in the development of various cultural and artistic skills. Parents can enjoy their holiday time while comfortably and safely leaving their children in these special areas. This ensures an unforgettable and independent holiday experience for children of all ages.

**Age Groups:** We serve with our trained and professional staff where our guests can participate based on their age groups (4-6 / 7 – 10 / 11+). Children in 00 – 03 age group can use the facilities in company with their parents.

**Summer Hours:** 10.00 – 00.00 / **Winter Hours:** 10.00 – 22.00

**Creative Workshops:** Ceramic Workshop / Wood Workshop / Fashion Design Workshop / Painting Workshop

**Activities:** Activity Room, Mini Disco, Playground, Handicraft Activities, Competitions, Cooking, Entertainment, PlayStation, Xbox

**Services Provided in the Rooms:** Cartoon channel in each room / Children's bathrobe, baby bathtub, mini stool, potty, and mini milk bar for children up to 12 years old / A specially designed name tag card with children's information and room number

**Babysitting Service:** Paid service. Available for children from 36 months and older.

Stroller, Baby Monitor (with deposit)

### Services Provided in the Restaurants:

Baby-friendly high chairs, bibs in special hygienic covers / Children's buffet in the Main Restaurant / Children's menu in À La Carte restaurants / Healthy food options served / Pastry, cake, and fruit offerings









# ENTERTAINMENT & ACTIVITY

*Experience your holiday to the rhythm of fun!*

## DAYTIME ACTIVITIES

### SUMMER SEASON

**Sport Activities:** Mat Works, Beach Volley, Boccia, Football, Water Polo, Dart, Survivor Team games (Adult), Zumba, daily tournaments, 2 Hard Tennis Court

**Sport Academy (Group Lessons):** Yoga, Fly Yoga, Pilates, Stretching, Aqua Cycling, Aqua Jumping, Aqua Fit Mat, Boxing, Animal Flow, Functional Training, TRX, Mobility and Strength

**Sport Academy (Private Lessons By Extra Charge):** Fitness, Yoga, Pilates, Box, Tennis, Squash, Football, Swimming lesson

### WINTER SEASON

**Sport Activities:** Morning Gym, Daily tournaments, 2 Hard Tennis Court, Squash, Aqua Gym, Boccia, Dart

## FITNESS

In line with the expectations and sports habits of all guests with the international sports activity team, offering the opportunity to stay fit during the holiday, equipped with Technogym and other famous brands of the world. The fitness center meets all the needs of professional athletes.

## NIGHT ACTIVITIES

### SUMMER SEASON

Nevezade Show Square Dance and acrobacy shows performed by international artists (21:45)

Mykonos Beach Entertainment Lounge,

Live music performances and performances by resident DJs after shows

### WINTER SEASON

Mardan Lounge Karaoke, Live music

Monkey Night Club DJ Performance

Dolmabahçe Lobby Piano Performance, Jazz Duo, String Quartet

## WATER SPORTS (CHARGED)

### SUMMER SEASON

Parasailing, Fly Board, Jet Ski, Water Ski, Ringo, Boat Tours

# MEETING HALLS

Consisting of 5448 square meters, 2 ballrooms and 13 halls combining technologies of the modern world, designed for fantastic weddings and dashing social invitations.

Feast staff serving with elegant menus and decoration reflecting court magnificence carry organizations to a different dimension.

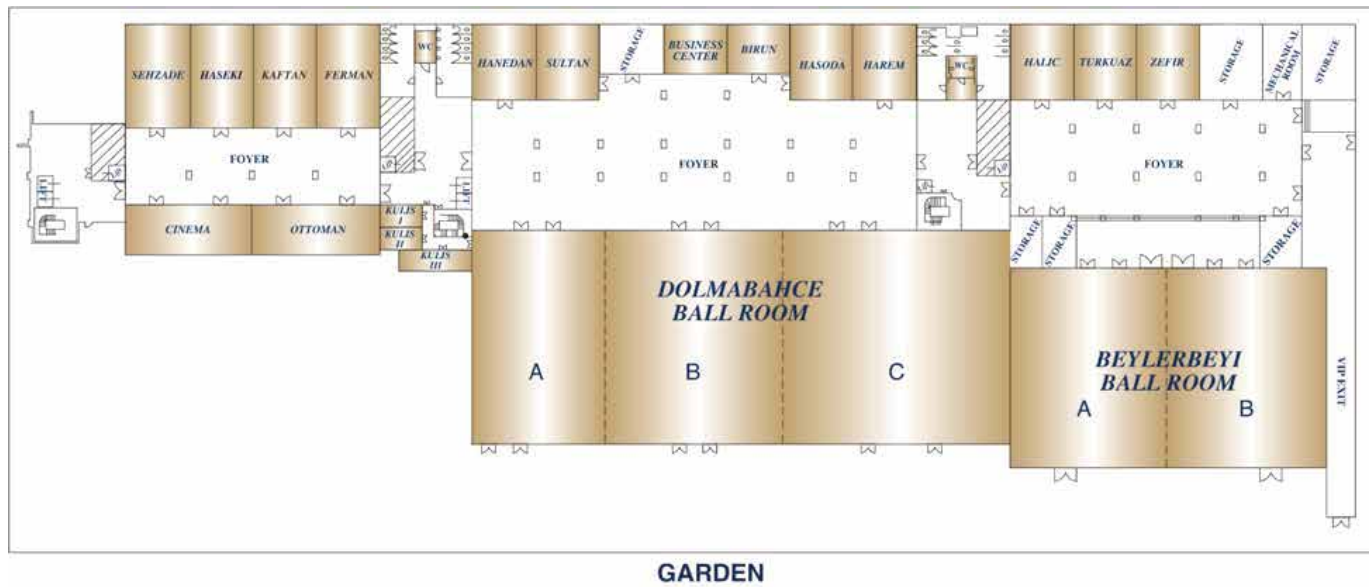
1.800 square meter pillar-free Dolmabahçe Ballroom, which can be divided into three parts and 1.000 square meter pillar-free Beylerbeyi Ballroom, which can be divided into two equal parts have the sufficient capacity to meet functional meeting demands.

13 different meeting halls with different sizes from 35 to 77 m2. 2 pillar-free Ballrooms, 3 Foyers

15 Meeting Halls

1 Movie Theater (18 Special Design Chairs)

## TITANIC MARDAN PALACE VISUAL



## MOVIE THEATER, MEETING HALLS AND FOYER

Area	Width (m)	Length (m)	Area (m <sup>2</sup> )	Height (m)	Banquet (Person)	Theater (Person)	Classroom (Person)	U Shape (Person)	Cocktail (Person)	Square Table (Person)
Movie Theater Foyer Site	9	31	279	2,5	-	-	-	-	-	-
Şehzade	7	11	77	2,3	60	77	59	43	96	-
Haseki	7	11	77	2,3	-	-	-	-	-	22
Kaftan	7	11	77	2,3	-	-	-	-	-	22
Ferman	7	11	77	2,3	60	77	59	43	96	-
Ottoman	7	11	77	2,3	-	-	-	-	-	22

### Şehzade

Total Area:	Dimensions:	Room Capacity (Person):
77 m <sup>2</sup>	7 x 11 x 2,3	77
Classroom	Theater	Banquet
59	77	60
Cocktail	Boardroom	U-Shape
96	-	43
Square Table	Daylight	-
-	-	-

### Haseki

Total Area:	Dimensions:	Room Capacity (Person):
77 m <sup>2</sup>	7 x 11 x 2,3	77
Classroom	Theater	Banquet
-	-	-
Cocktail	Boardroom	U-Shape
-	22	-
Square Table	Daylight	-
-	-	-

### Kaftan

Total Area:	Dimensions:	Room Capacity (Person):
77 m <sup>2</sup>	7 x 11 x 2,3	77
Classroom	Theater	Banquet
-	-	-
Cocktail	Boardroom	U-Shape
-	22	-
Square Table	Daylight	-
-	-	-

### Ferman

Total Area:	Dimensions:	Room Capacity (Person):
77 m <sup>2</sup>	7 x 11 x 2,3	77
Classroom	Theater	Banquet
59	77	60
Cocktail	Boardroom	U-Shape
96	-	43
Square Table	Daylight	-
-	-	-

### Ottoman

Total Area:	Dimensions:	Room Capacity (Person):
77 m <sup>2</sup>	7 x 11 x 2,3	77
Classroom	Theater	Banquet
-	-	-
Cocktail	Boardroom	U-Shape
-	22	-
Square Table	Daylight	-
-	-	-

### Movie Theater Foyer Site

Total Area:	Dimensions:	Room Capacity (Person):
279 m <sup>2</sup>	9 x 31 x 2,5	279
Classroom	Theater	Banquet
-	-	-
Cocktail	Boardroom	U-Shape
-	-	-
Square Table	Daylight	-
-	-	-





## DOLMABAĞÇE BALLROOM & MEETING HALLS & FOYER SITE

Area	Width (m)	Length (m)	Area (m <sup>2</sup> )	Height (m)	Banquet (Person)	Theater (Person)	Classroom (Person)	U Shape (Person)	Cocktail (Person)
Dolmabağçe Foyer Site	16	55	880	2,5	-	-	-	-	900
Dolmabağçe Ballroom	24	75	1.800	5	1.200	1.800	1.280	290	2.000
Dolmabağçe Ballroom I	24	17	400	5	240	400	280	90	370
Dolmabağçe Ballroom II	24	25	600	5	420	600	450	130	620
Dolmabağçe Ballroom III	24	32	800	5	480	760	520	160	730
Hanedan	7	8	56	2,3	40	56	43	35	60
Sultan	7	8	56	2,3	40	56	43	35	60
Birun	5	7	35	2,3	40	35	29	23	30
Hasoda	7	8	56	2,3	40	56	43	35	60
Harem	7	8	56	2,3	40	56	43	35	60

### Dolmabağçe Ballroom

**Total Area:** 1.800 m<sup>2</sup> **Dimensions:** 24 x 75 x 5 **Room Capacity (Person):** 2000

Classroom	Theater	Banquet	Cocktail	Boardroom	U-Shape	Square Table	Daylight
1280	1800	1200	2000	-	290	-	-

### Dolmabağçe Ballroom I

**Total Area:** 400 m<sup>2</sup> **Dimensions:** 24 x 17 x 5 **Room Capacity (Person):** 370

Classroom	Theater	Banquet	Cocktail	Boardroom	U-Shape	Square Table	Daylight
280	400	240	370	-	90	-	-

### Dolmabağçe Ballroom II

**Total Area:** 600 m<sup>2</sup> **Dimensions:** 24 x 25 x 5 **Room Capacity (Person):** 620

Classroom	Theater	Banquet	Cocktail	Boardroom	U-Shape	Square Table	Daylight
450	600	420	620	-	130	-	-

### Dolmabağçe Ballroom III

**Total Area:** 800 m<sup>2</sup> **Dimensions:** 24 x 32 x 5 **Room Capacity (Person):** 730

Classroom	Theater	Banquet	Cocktail	Boardroom	U-Shape	Square Table	Daylight
520	760	480	730	-	160	-	-

### Dolmabağçe Foyer Site

**Total Area:** 880 m<sup>2</sup> **Dimensions:** 16 x 55 x 2,5 **Room Capacity (Person):** 900

Classroom	Theater	Banquet	Cocktail	Boardroom	U-Shape	Square Table	Daylight
-	-	-	900	-	-	-	-

### Hanedan

**Total Area:** 56 m<sup>2</sup> **Dimensions:** 7 x 8 x 2,3 **Room Capacity (Person):** 60

Classroom	Theater	Banquet	Cocktail	Boardroom	U-Shape	Square Table	Daylight
43	56	40	60	-	35	-	-

### Sultan

**Total Area:** 56 m<sup>2</sup> **Dimensions:** 7 x 8 x 2,3 **Room Capacity (Person):** 60

Classroom	Theater	Banquet	Cocktail	Boardroom	U-Shape	Square Table	Daylight
43	56	40	60	-	35	-	-

### Birun

**Total Area:** 35 m<sup>2</sup> **Dimensions:** 5 x 7 x 2,3 **Room Capacity (Person):** 30

Classroom	Theater	Banquet	Cocktail	Boardroom	U-Shape	Square Table	Daylight
29	35	40	30	-	23	-	-

### Hasoda

**Total Area:** 56 m<sup>2</sup> **Dimensions:** 7 x 8 x 2,3 **Room Capacity (Person):** 60

Classroom	Theater	Banquet	Cocktail	Boardroom	U-Shape	Square Table	Daylight
43	56	40	60	-	35	-	-

### Harem

**Total Area:** 56 m<sup>2</sup> **Dimensions:** 7 x 8 x 2,3 **Room Capacity (Person):** 60

Classroom	Theater	Banquet	Cocktail	Boardroom	U-Shape	Square Table	Daylight
43	56	40	60	-	35	-	-

\*Prepared based on the maximum capacity.



## BEYLERBEYİ BALLROOM & MEETING HALLS & FOYER SITE

Area	Width (m)	Length (m)	Area (m <sup>2</sup> )	Height (m)	Banquet (Person)	Theater (Person)	Classroom (Person)	U Shape (Person)	Cocktail (Person)
Beylerbeyi Foyer Site	13	36	468	3	-	-	-	-	500
Beylerbeyi Ballroom Entrance	4	23	92	5.5	-	-	-	-	-
Beylerbeyi Ballroom	24	42	1.000	5	780	1.000	840	200	1.100
Beylerbeyi Ballroom I	24	20	500	5	360	490	400	120	570
Beylerbeyi Ballroom II	24	20	500	5	360	490	400	120	570
Haliç	7	8	56	2,3	40	56	46	35	60
Turkuaz	7	8	56	2,3	40	56	46	35	60
Zefir	7	8	56	2,3	40	56	46	35	60

### Beylerbeyi Ballsaal

**Total Area:** 1.000 m<sup>2</sup> **Dimensions:** 24 x 42 x 5 **Room Capacity (Person):** 1100

Sinf Dizani	Tiyatro	Banquet	Cocktail	Boardroom	U-Shape	Square Table	Daylight
840	1000	780	1100	-	200	-	-

### Beylerbeyi Ballsaal I

**Total Area:** 500 m<sup>2</sup> **Dimensions:** 24 x 20 x 5 **Room Capacity (Person):** 570

Sinf Dizani	Tiyatro	Banquet	Cocktail	Boardroom	U-Shape	Square Table	Daylight
400	490	360	570	-	120	-	-

### Beylerbeyi Ballsaal II

**Total Area:** 500 m<sup>2</sup> **Dimensions:** 24 x 20 x 5 **Room Capacity (Person):** 570

Sinf Dizani	Tiyatro	Banquet	Cocktail	Boardroom	U-Shape	Square Table	Daylight
400	490	360	570	-	120	-	-

### Beylerbeyi Foyerbereich

**Total Area:** 468 m<sup>2</sup> **Dimensions:** 13 x 36 x 3 **Room Capacity (Person):** 500

Sinf Dizani	Tiyatro	Banquet	Cocktail	Boardroom	U-Shape	Square Table	Daylight
-	-	-	500	-	-	-	-

### Haliç

**Total Area:** 56 m<sup>2</sup> **Dimensions:** 7 x 8 x 2,3 **Room Capacity (Person):** 60

Sinf Dizani	Tiyatro	Banquet	Cocktail	Boardroom	U-Shape	Square Table	Daylight
46	56	40	60	-	35	-	-

### Turkuaz

**Total Area:** 56 m<sup>2</sup> **Dimensions:** 7 x 8 x 2,3 **Room Capacity (Person):** 60

Sinf Dizani	Tiyatro	Banquet	Cocktail	Boardroom	U-Shape	Square Table	Daylight
46	56	40	60	-	35	-	-

### Zefir

**Total Area:** 56 m<sup>2</sup> **Dimensions:** 7 x 8 x 2,3 **Room Capacity (Person):** 60

Sinf Dizani	Tiyatro	Banquet	Cocktail	Boardroom	U-Shape	Square Table	Daylight
46	56	40	60	-	35	-	-

\* Prepared based on the maximum capacity.





# CULLINAN LINKS GOLF CLUB

Cullinan Links Golf Club is the only golf course of Turkey which has both a river and the seacoast.

Cullinan Links Golf Club is renovated to 36 holes by "European Golf Design", the world's leading golf course design company.

Cullinan Links Golf Club offers golf lovers an illuminated Driving Range, the pleasure of playing with a 4-season golf vehicle and lessons from internationally certified golf instructors at the Golf Academy.

<b>Official Opening</b>	11 October 2021
<b>Field Size</b>	1.100.000 m <sup>2</sup> (110 hektar)
<b>Opening Hours</b>	Summer Hours: 07.00 – 19.00 Winter Hours: 08.00 – 18.00 F&B ALL INCLUSIVE KONSEPT
<b>Ordinary Wind Direction</b>	In the morning from North (Taurus Mountains) and in the afternoon South (Sea Side)
<b>Turf Type</b>	In the summer: Paspalum. In the winter: Poa and lolium perenne.
<b>Measurements</b>	Free pass marks are measured beginning from the Green. Green size is about 600 m <sup>2</sup> .
<b>Field (Tee) Size</b>	About 250 m <sup>2</sup> (White-Yellow-Red)
<b>Bunker</b>	Total 119 - Fairway Bunker 42
<b>Green Bunker</b>	77
<b>Ponds</b>	Total 10
<b>Stream</b>	Beşgöz Stream
<b>Driving Range</b>	36.000 m <sup>2</sup> 40 grass fields (105 m), 20 protected fields (105 m)
<b>Putting Green</b>	Total 5 –1 x 1.042 m <sup>2</sup> (18 holes), 4 x 500 m <sup>2</sup> (9 holes)
<b>Pitching Green</b>	Total 2 Chipping Green 735 m <sup>2</sup> and 432 m <sup>2</sup>
<b>Golf Carts</b>	Total 64
<b>Trolley</b>	Total 240
<b>Golf Bags for Rent</b>	Left and right hand
<b>Golf Lessons</b>	Lessons are instructed at any level by PGA professionals
<b>Maximum Hcp.</b>	Man 36 HCP, Woman 44 HCP



BERLIN

# TITANIC

---

## HOTELS

ISTANBUL

BODRUM

ANTALYA

SHARM EL-SHEIKH