

Eastin Tan Hotel Chiang Mai




Eastin Tan Hotel Chiang Mai is located on the main road of Huay Kaew and just minutes away from the Nimmanhaemin Road Shopping and entertainment area, the most popular area to visit when you are in Chiang Mai where small designer shops, home furnishings, art gallery and restaurants can be found.

Opening Date :
1 December 2014

Owner :
Tanboon Company Limited.


Hotel Management :
Absolute Hotel Services Co., Ltd.

General Manager:
Kris Panya



Hotel has a total of 128 rooms and suites with sizes ranging from 34 - 162 sqm available as well as dedicated play area for children.

The overall design has contemporary Asian influences throughout its interiors. All accommodation will feature free WiFi and in-room deluxe amenities. Other facilities include a signature restaurant, gym with sauna and steam, large swimming pool.



Hotel has a total of 128 rooms and suites with sizes ranging from 34 - 162 sqm available as well as dedicated play area for children.

The overall design has contemporary Asian influences throughout its interiors. All accommodation will feature free WiFi and in-room deluxe amenities. Other facilities include a signature restaurant, gym with sauna and steam, large swimming pool.

Guest Room Features

[illegible]

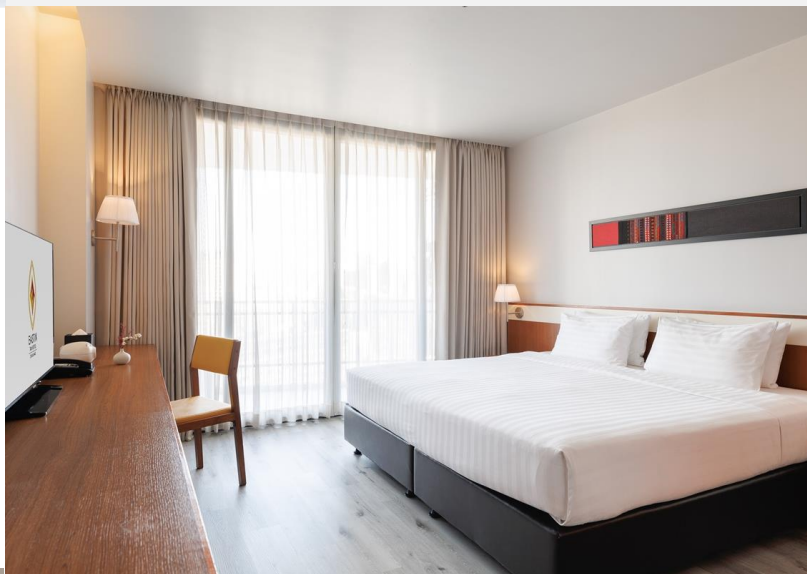


Superior

All designed in deluxe comfort, featuring luxury beddings, shower, bathtub, individually controlled air conditioning, LCD TV with international satellite channels, free Wi-Fi internet, fully stocked mini bar, IDD telephone, tea/coffee making facilities, hairdryer and in-room safe.

Superior Premium

Our Superior Premium rooms are a comfortable 34 sqm and feature luxury bedding, individually controlled air conditioning, an LCD TV with international channels and complimentary Wi-Fi internet access.



Superior Premium Mountain View

All Superior Premium Mountain View rooms are a comfortable 34 sqm and provide guests with striking views of the mountainous landscape from the privacy of their own balcony.

Deluxe

Discover our comfortably appointed 34 sqm Deluxe rooms and feel right at home during your stay in Chiang Mai.





Deluxe Mountain View

Experience the beauty of Chiang Mai's mountainous landscape from our 34 sqm Deluxe Mountain View rooms.

Junior Suite

Our 52 sqm Junior Suites are designed with a dedicated living room area that includes a sofa and coffee table for added comfort.



One Bedroom Suite

All One Bedroom Suites include a separate living room that provides added privacy from the bedroom

One Bedroom Suite Mountain View

Enjoy panoramic views of Chiang Mai's stunning mountains including amazing views of Doi Suthep, from the comfort of your One Bedroom Suite Mountain View room.





Two Bedroom Suites

Choose a Two Bedroom Suite and enhance your stay with an extra bedroom and an expansive living area ideal for relaxation.

Two Bedroom Suites feature 2 bedrooms and 2 bathrooms in addition to a separated living and dining area. The master bathroom has a separated shower stall and bathtub.

Two Bedroom Penthouse

Our penthouse is designed in luxury. Whether you are looking to entertain or simply spread out, our Two Bedroom Penthouses offer 140 sqm of space for you to enjoy.

Penthouses feature 2 bedrooms (1 with a king bed and 1 with twins) and 2 bathrooms in addition to a separated living and dining area. The master bathroom has a separated shower stall and bathtub.



Three Bedroom Duplex Penthouse

Our Three Bedroom Duplex Penthouses are an extremely spacious 162 sqm with a high degree of comfort for travellers.

Duplex Penthouses feature 3 bedrooms (2 with king beds and 1 with twins) and 3 bathrooms in addition to separated living and dining areas. 2 of the bathrooms have separated shower stalls and bathtubs.

Other facilities and amenities include luxury bedding, individually controlled air conditioning, an LCD TV with international satellite channels, Wi-Fi internet access, a small pantry, stove, fully stocked minibar, IDD telephone, tea/coffee making facilities, hairdryer and an in-room safety deposit box.



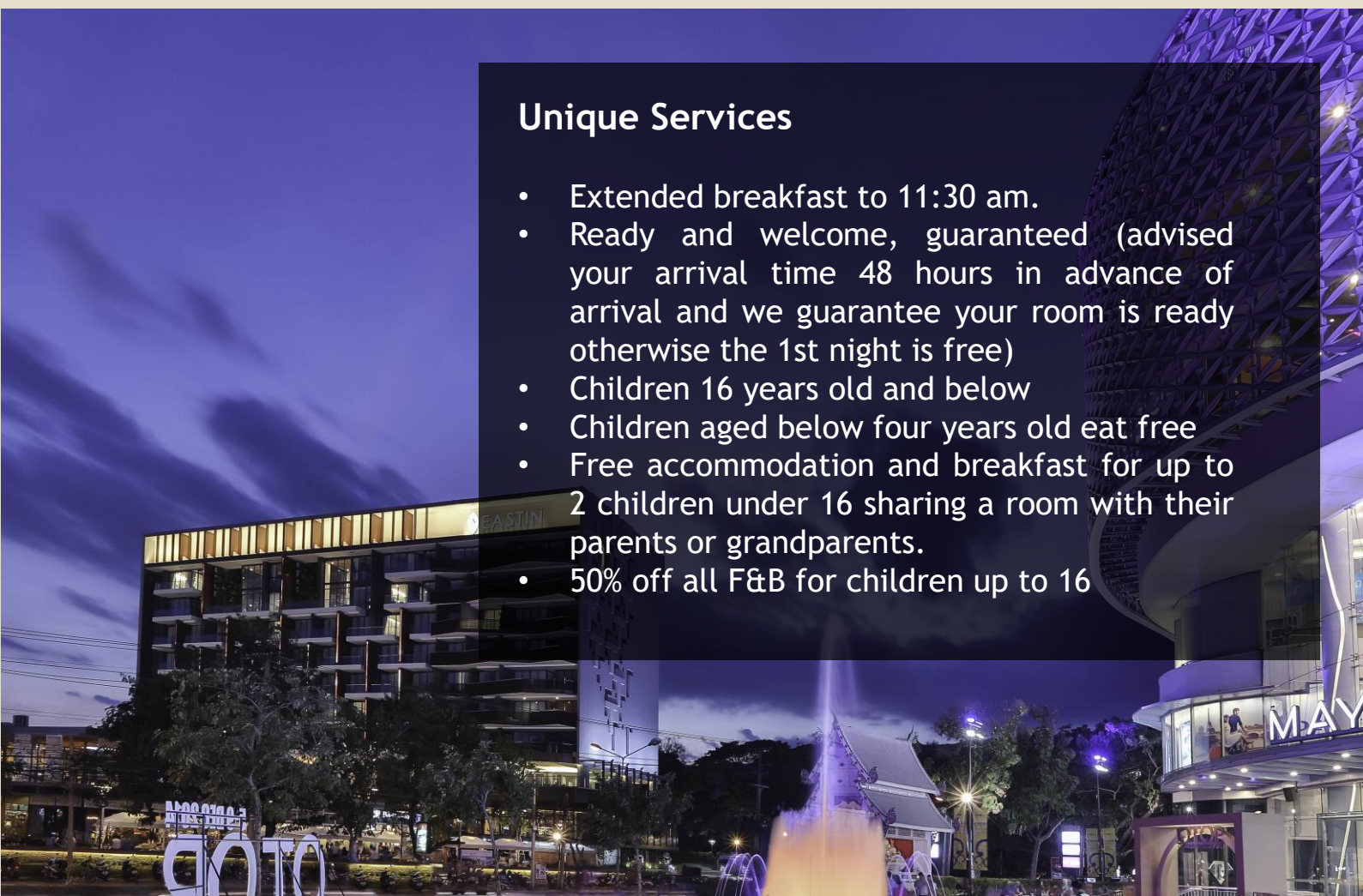


Facilities & Services

- Fitness centre & swimming pool
- Hi-speed Wi-Fi internet access throughout the hotel
- Daily housekeeping service
- Laundry service
- Transportation service

Unique Services

- Extended breakfast to 11:30 am.
- Ready and welcome, guaranteed (advised your arrival time 48 hours in advance of arrival and we guarantee your room is ready otherwise the 1st night is free)
- Children 16 years old and below
- Children aged below four years old eat free
- Free accommodation and breakfast for up to 2 children under 16 sharing a room with their parents or grandparents.
- 50% off all F&B for children up to 16



Restaurants

T Station Bar & Restaurant

A unique setting with stylish modern American interior design from the 1920's railways station, T Station restaurant located on the lobby floor serve all-day dining with an American twist for lunch and dinner.

Opening Hours

06.00 - 22.30 hrs.





Eastin Tan Hotel Chiang Mai

171 Huay Kaew Road, T. Suthep,
Muang Chiang Mai,
Chiang Mai 50200 Thailand

Tel: +66 52 001 999

Email: rsvn@eastintanchiangmai.com



EastinTanHotelChiangMai